

CORNER RECORD

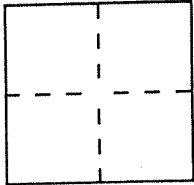
Document Number A.P. 15-202-42

City of SAN RAFAEL

County of MARIN, California

Brief Legal Description PARCEL 2

18 P.M. 12
A.P. 15-202-42



CORNER TYPE

Government Corner Control
Meander Property
Rancho Other
Date of Survey 7/20/99

COORDINATES (Optional)

N. _____
E. _____
Zone _____ Datum _____
Elev. _____

Corner — Left as found Found and tagged Established Reestablished Rebuilt

Identification and type of corner found: Evidence used to identify or procedure used to establish or reestablish the corner:

CORNER SET FROM STREET MONUMENTS
AS SHOWN ON 18 P.M. 12

A description of the physical condition of the monument as found and as set or reset:

SET 3/4" PIPE & CAP P.L.S. 4694

SURVEYOR'S STATEMENT

This Corner Record was prepared by me or under my direction in conformance with the Land Surveyors' Act on 7/20/99 19 99.

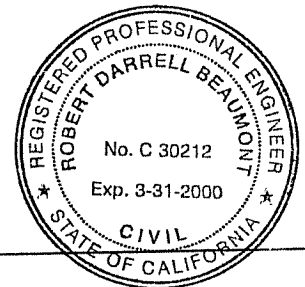
Signed Lawrence P. Doyle L.S. or R.C.E. Number P.L.S. 4694



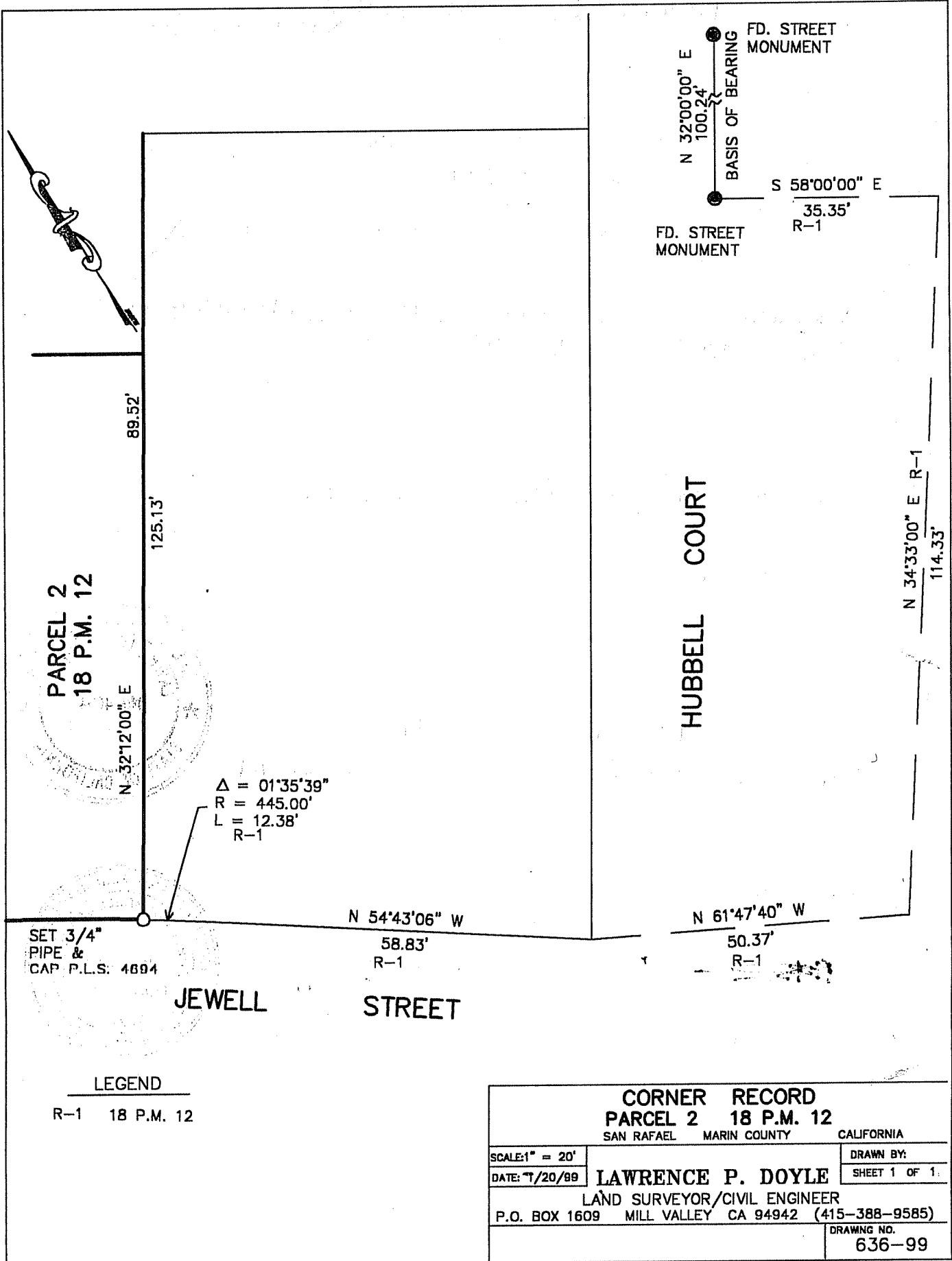
COUNTY SURVEYOR'S STATEMENT

This Corner Record was received AUGUST 2 19 99 and examined and filed AUGUST 10 19 99.

Signed [Signature] Title DEPUTY



County Surveyor's Comment _____



PARCEL 2
18 P.M. 12

89.52'

125.13'

N 32°12'00" E

$\Delta = 01^{\circ}35'39''$
 $R = 445.00'$
 $L = 12.38'$
 R-1

SET 3/4"
PIPE &
CAP P.L.S. 4894

JEWELL

STREET

N 54°43'06" W

58.83'
R-1

HUBBELL COURT

N 61°47'40" W

50.37'
R-1

N 32°00'00" E
100.24'
BASIS OF BEARING
FD. STREET MONUMENT
S 58°00'00" E
35.35'
R-1
FD. STREET MONUMENT

N 34°33'00" E R-1
114.33'

LEGEND

R-1 18 P.M. 12

CORNER RECORD	
PARCEL 2 18 P.M. 12	
SAN RAFAEL MARIN COUNTY CALIFORNIA	
SCALE: 1" = 20'	DRAWN BY:
DATE: 1/20/89	LAWRENCE P. DOYLE
LAND SURVEYOR/CIVIL ENGINEER	
P.O. BOX 1609 MILL VALLEY CA 94942 (415-388-9585)	
DRAWING NO. 636-99	