

A.P. # 15-202-34

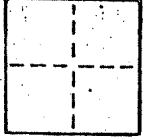
# CORNER RECORD

1 of 2

COUNTY OF Marin T. \_\_\_\_\_ R. \_\_\_\_\_ MERIDIAN \_\_\_\_\_ CALIFORNIA

CORNER TYPE: GOVT. CORNER  MEANDER  RANCHO  CONTROL  OTHER

CORNER IDENTIFICATION — DATE OF VISIT \_\_\_\_\_ 19\_\_



CORNER — LEFT AS FOUND  FOUND AND TAGGED  REESTABLISHED OBLITERATED CORNER  REBUILT

### PHYSICAL DESCRIPTION OF CORNER FOUND; EVIDENCE AND METHOD USED TO IDENTIFY OR REESTABLISH

Found a Redwood Hub in decayed condition at the intersection of the courses "N 50 09' E 105.150'" and "N 63 10' 30" E 92.020'" of Lot 1 "Map of Hubbell Court" Recorded in Book 13 of Maps at Page 82, Marin County Records; Replaced with a 3/4" iron pipe with plastic plug "LS 3775" By and Per said Map.

### PHYSICAL DESCRIPTION OF MONUMENTS REBUILT OR PERPETUATED

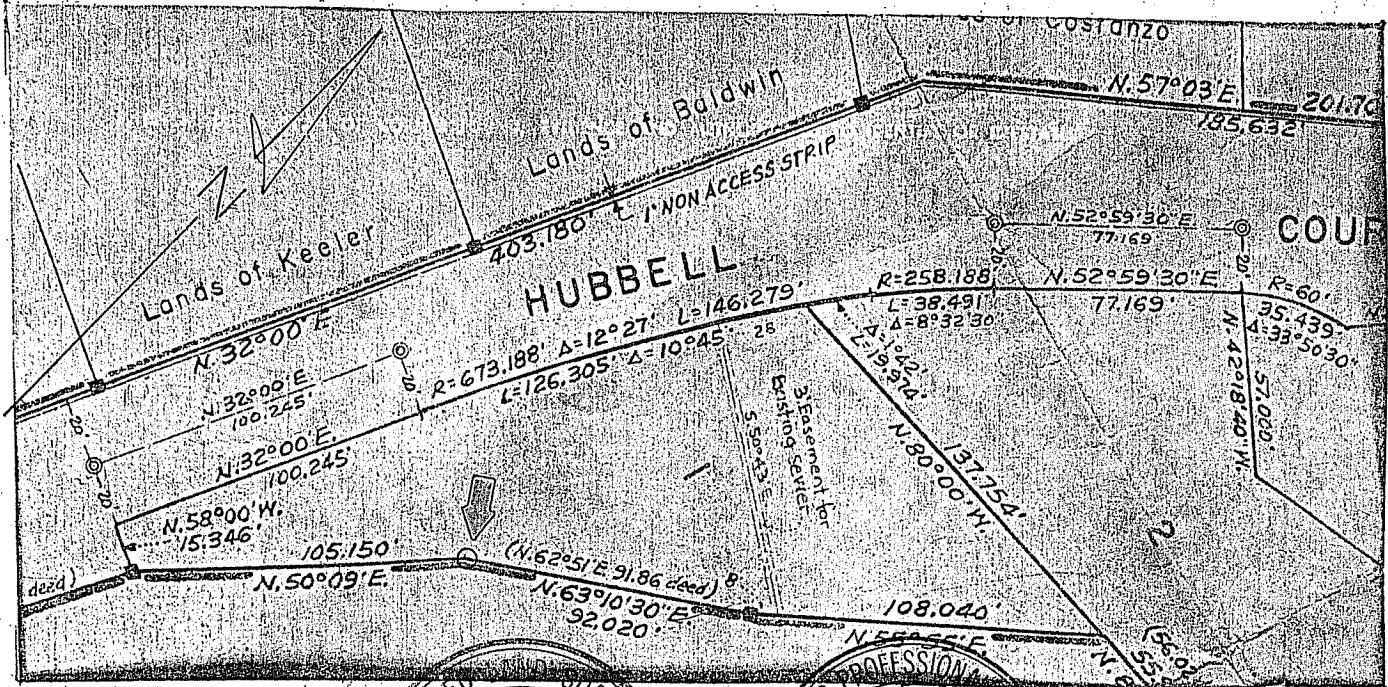
AS SHOWN

J-1595 STUCKEY

AP# 15-202-34

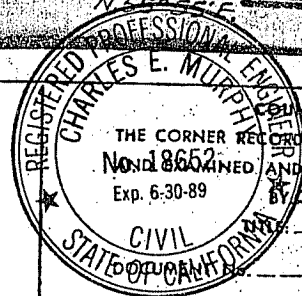
CALIFORNIA COORDINATE SYSTEM ORDER: FIRST  SECOND  THIRD   
STATIONS USED: NGS (USC & GS)  STATE  COUNTY  OTHER  STATION \_\_\_\_\_ STATION \_\_\_\_\_  
ZONE \_\_\_\_\_ ELEVATION \_\_\_\_\_ NORTHINGS (Y) \_\_\_\_\_ EASTINGS (X) \_\_\_\_\_

SKETCH: (Include reference tie or witness points, remarks and topo of area)



**SURVEYOR'S CERTIFICATE**  
THIS CORNER RECORD WAS PREPARED BY JOSEPH CARPIS UNDER MY DIRECTION IN CONFORMANCE WITH THE LAND SURVEYORS ACT ON 9 June 1987 No. 3787

SIGNED: \_\_\_\_\_  
L.S. or R.C.E. No.: L.S. 5470E CALIFORNIA  
Expires: 01-87



**COUNTY SURVEYOR'S CERTIFICATE**  
THE CORNER RECORD WAS RECEIVED June 1987  
AND FILED July 2 1987  
By Charles E. Murphy  
Deputy County Surveyor

STATEMENT ON BACK OF SHEET No

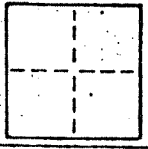
# CORNER RECORD

2 of 2

COUNTY OF Marin T. \_\_\_\_\_ R. \_\_\_\_\_ MERIDIAN \_\_\_\_\_ CALIFORNIA

CORNER TYPE: GOVT. CORNER  MEANDER  RANCHO  CONTROL  OTHER

CORNER IDENTIFICATION — DATE OF VISIT \_\_\_\_\_ 19\_\_\_\_



CORNER — LEFT AS FOUND  FOUND AND TAGGED  REESTABLISHED OBLITERATED CORNER  REBUILT

### PHYSICAL DESCRIPTION OF CORNER FOUND; EVIDENCE AND METHOD USED TO IDENTIFY OR REESTABLISH

Set a 3/4" iron pipe with plastic plug "LS 3775" at the Most Northerly corner of Lot 1 "Map of Hubbell Court" Recorded in Book 13 of Maps at Page 82, Marin County Records, By and Per Said Map.

### PHYSICAL DESCRIPTION OF MONUMENTS REBUILT OR PERPETUATED

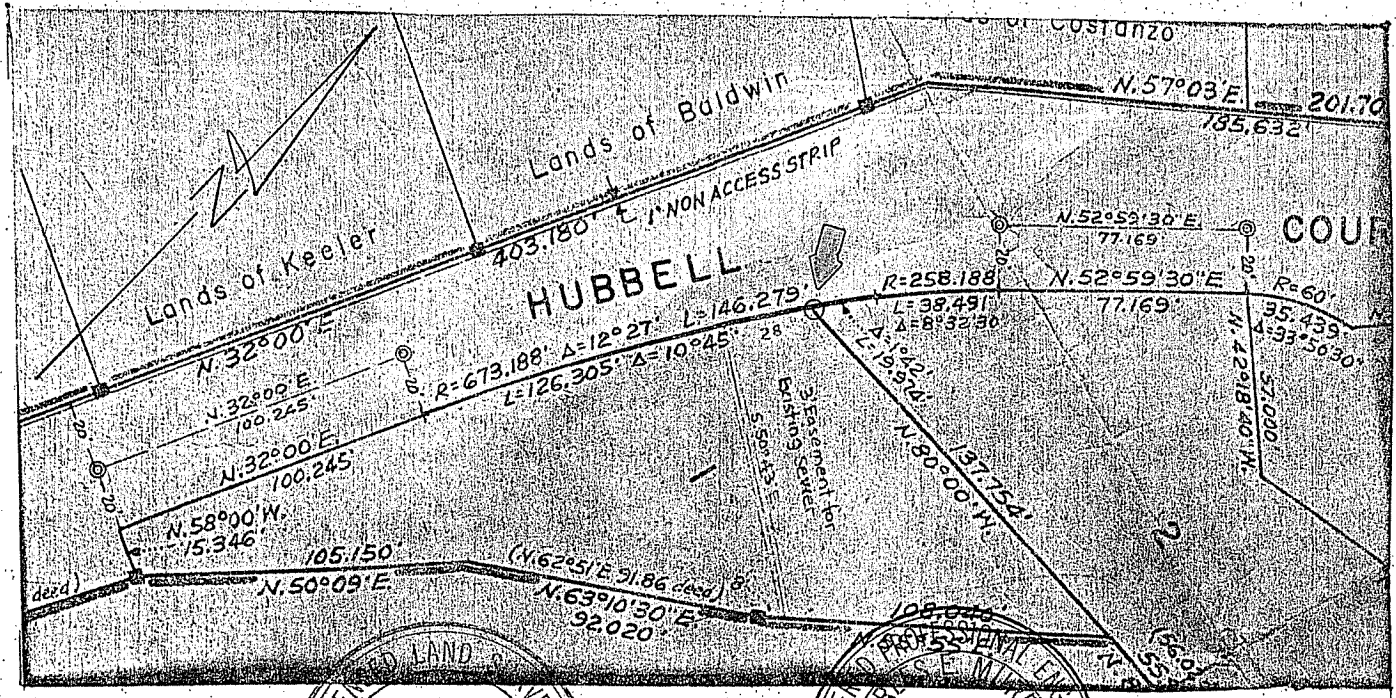
AS SHOWN

J-1595 STUCKY

AP# 15-202-34

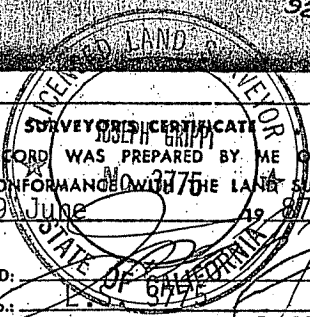
CALIFORNIA COORDINATE SYSTEM ORDER: FIRST  SECOND  THIRD   
STATIONS USED: NGS (USC & GS)  STATE  COUNTY  OTHER  STATION \_\_\_\_\_ STATION \_\_\_\_\_  
ZONE \_\_\_\_\_ ELEVATION \_\_\_\_\_ NORTHINGS (Y) \_\_\_\_\_ EASTINGS (X) \_\_\_\_\_

### SKETCH: (Include reference tie or witness points, remarks and topo of area)

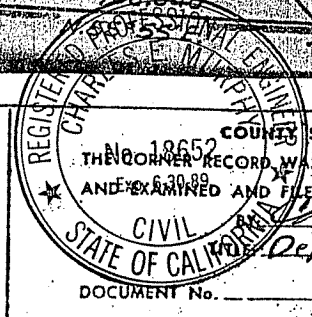


THIS CORNER RECORD WAS PREPARED BY ME OR UNDER MY DIRECTION IN CONFORMANCE WITH THE LAND SURVEYORS ACT ON 9 June 1987

SIGNED: \_\_\_\_\_  
L.S. or R.C.E. No.: \_\_\_\_\_



Expires 12-31-87



COUNTY SURVEYOR'S CERTIFICATE  
THE CORNER RECORD WAS RECEIVED June 1987  
AND EXAMINED AND FILED July 2 1987  
Charles C. Murphy  
Deputy County Surveyor

DOCUMENT No. \_\_\_\_\_  
STATEMENT ON BACK OF SHEET NO