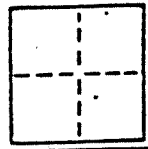


# CORNER RECORD

COUNTY OF MARIN T. \_\_\_\_\_ S. \_\_\_\_\_ MERIDIAN CALIFORNIA

CORNER TYPE: GOVT. CORNER  MEANDER  RANCHO  CONTROL  OTHER

CORNER IDENTIFICATION — DATE OF VISIT DEC 19 90



CORNER — LEFT AS FOUND  FOUND AND TAGGED  REESTABLISHED OBLITERATED CORNER  RESULT

PHYSICAL DESCRIPTION OF CORNER FOUND, EVIDENCE AND METHOD USED TO IDENTIFY OR REESTABLISH

**FOUND 3/4" IRON PIPE & PLUG L.S # 5814**

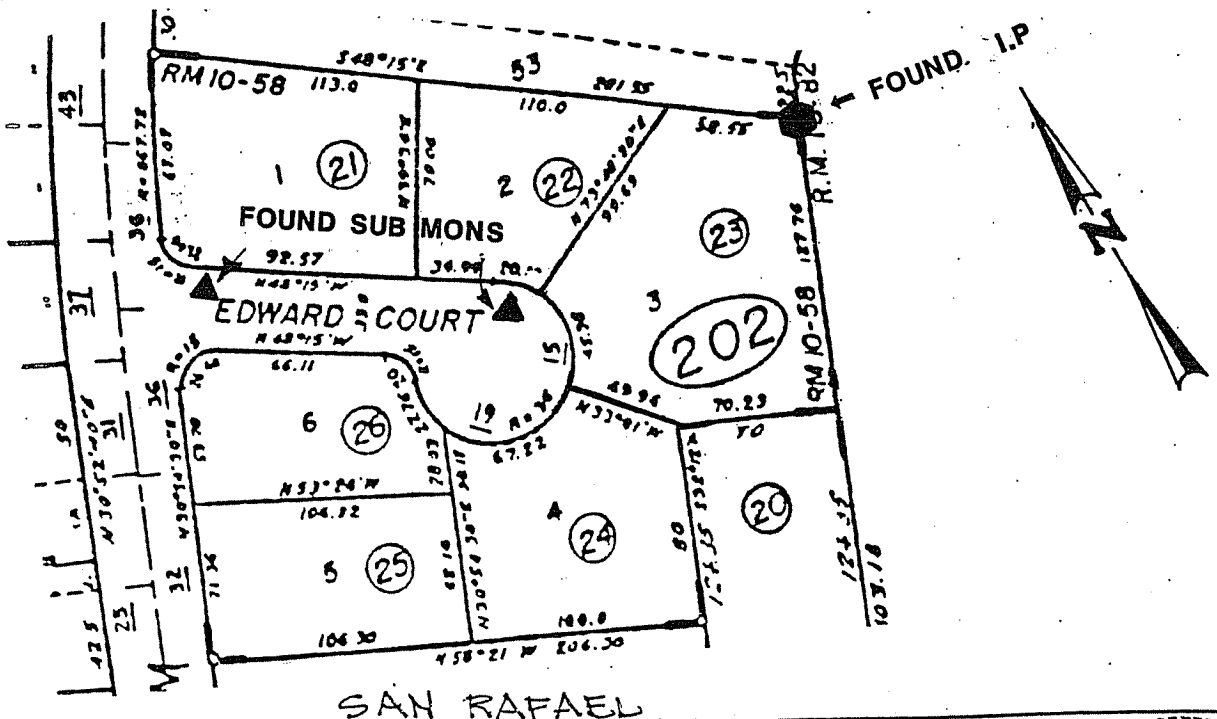
PHYSICAL DESCRIPTION OF MONUMENTS. RESULT OR PERPETUATED

CALIFORNIA COORDINATE SYSTEM ORDER: FIRST  SECOND  THIRD

STATIONS USED: NGS (USC & GS)  STATE  COUNTY  OTHER  STATION \_\_\_\_\_ STATION \_\_\_\_\_

ZONE \_\_\_\_\_ ELEVATION \_\_\_\_\_ NORTHINGS (7) \_\_\_\_\_ EASTINGS (8) \_\_\_\_\_

SKETCH: (Include reference tie or witness points, remarks and topo of area)



**SURVEYOR'S CERTIFICATE**

THIS CORNER RECORD WAS PREPARED BY ME OR UNDER MY DIRECTION IN CONFORMANCE WITH THE LAND SURVEYORS ACT ON January 17 1991

SIGNED: W. Edward White

L.S. or R.C.E. No. 15948

PROFESSIONAL LAND SURVEYOR  
 REGISTERED PROFESSIONAL LAND SURVEYOR  
 CIVIL  
 STATE OF CALIFORNIA

**COUNTY SURVEYOR'S CERTIFICATE**

THE CORNER RECORD WAS RECEIVED, EXAMINED AND FILED AND EXAMINED AND FILED

BY: \_\_\_\_\_

TITLE: \_\_\_\_\_

DOCUMENT No. \_\_\_\_\_

STATEMENT ON BACK OF SHEET

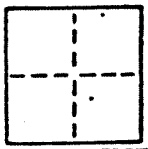
REGISTERED PROFESSIONAL LAND SURVEYOR  
 CIVIL  
 STATE OF CALIFORNIA

Exp. 3-31-92

NO

# CORNER RECORD

COUNTY OF MARIN T. \_\_\_\_\_ R. \_\_\_\_\_ MERIDIAN \_\_\_\_\_ CALIFORNIA \_\_\_\_\_  
 CORNER TYPE: GOVT. CORNER  MEANDER  RANCHO  CONTROL  OTHER   
 CORNER IDENTIFICATION — DATE OF VISIT DEC. 1990



CORNER — LEFT AS FOUND  FOUND AND TAGGED  REESTABLISHED OBLITERATED CORNER  RESULT   
 PHYSICAL DESCRIPTION OF CORNER FOUND, EVIDENCE AND METHOD USED TO IDENTIFY OR REESTABLISH

## SUBDIVISION MONUMENTS AS SHOWN

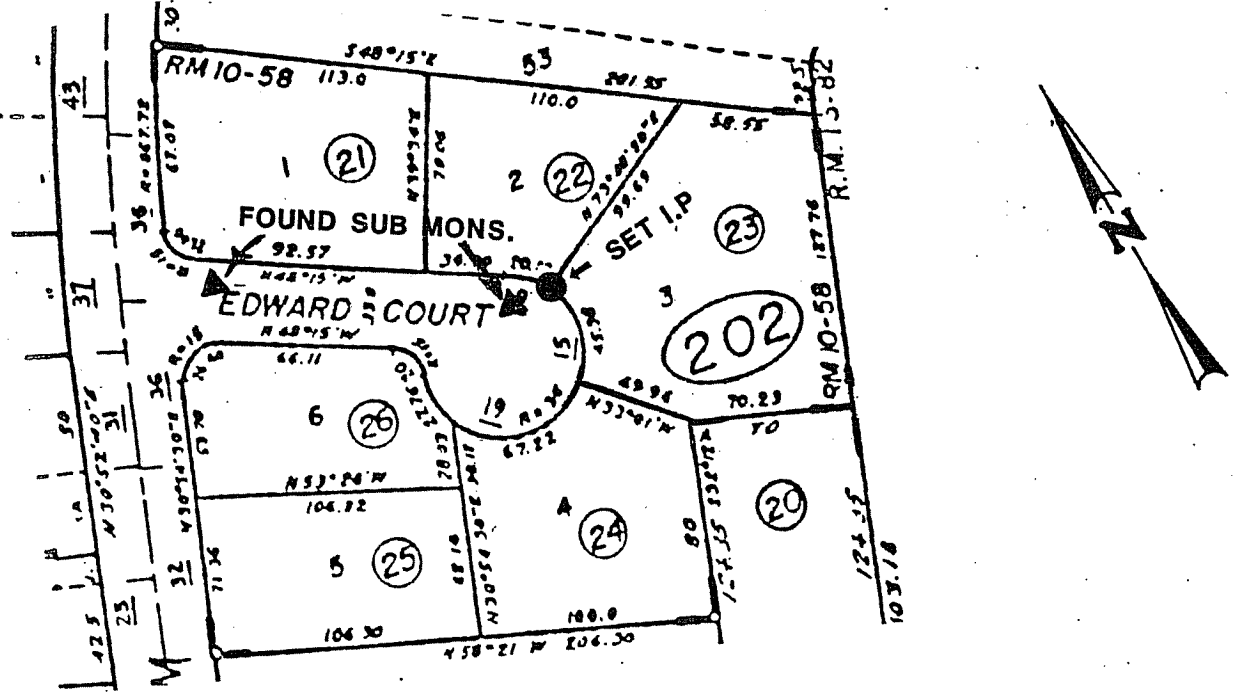
10 RM 58

PHYSICAL DESCRIPTION OF MONUMENTS. REBUILT OR PERPETUATED

## SET 3/4" IRON PIPE & PLUG R.C.E 15945

CALIFORNIA COORDINATE SYSTEM ORDER: FIRST  SECOND  THIRD   
 STATIONS USED: NGS (USC & GS)  STATE  COUNTY  OTHER  STATION \_\_\_\_\_ STATION \_\_\_\_\_  
 ZONE \_\_\_\_\_ ELEVATION \_\_\_\_\_ NORTHINGS (N) \_\_\_\_\_ EASTINGS (E) \_\_\_\_\_

SKETCH: (Include reference tie or witness points, remarks and topo of area)

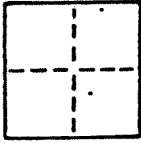


**SURVEYOR'S CERTIFICATE**  
 THIS CORNER RECORD WAS PREPARED BY ME OR UNDER MY DIRECTION IN CONFORMANCE WITH THE LAND SURVEYORS ACT ON January 17 1991  
 SIGNED: W. Edward Nute  
 L.S. or R.C.E. No. 15,945

**COUNTY SURVEYOR'S CERTIFICATE**  
 THE CORNER RECORD WAS RECEIVED AND EXAMINED AND FILED BY: \_\_\_\_\_ TITLE: \_\_\_\_\_ DOCUMENT No. \_\_\_\_\_ STATEMENT ON BACK OF SHEET  NO

# CORNER RECORD AP# 15-202 23

COUNTY OF MARIN T. \_\_\_\_\_ R. \_\_\_\_\_ MERIDIAN \_\_\_\_\_ CALIFORNIA \_\_\_\_\_  
 CORNER TYPE: GOVT. CORNER  MEANDER  RANCHO  CONTROL  OTHER   
 CORNER IDENTIFICATION — DATE OF VISIT DEC. 19 90



CORNER — LEFT AS FOUND  FOUND AND TAGGED  REESTABLISHED OBLITERATED CORNER  RESULT

PHYSICAL DESCRIPTION OF CORNER FOUND, EVIDENCE AND METHOD USED TO IDENTIFY OR REESTABLISH

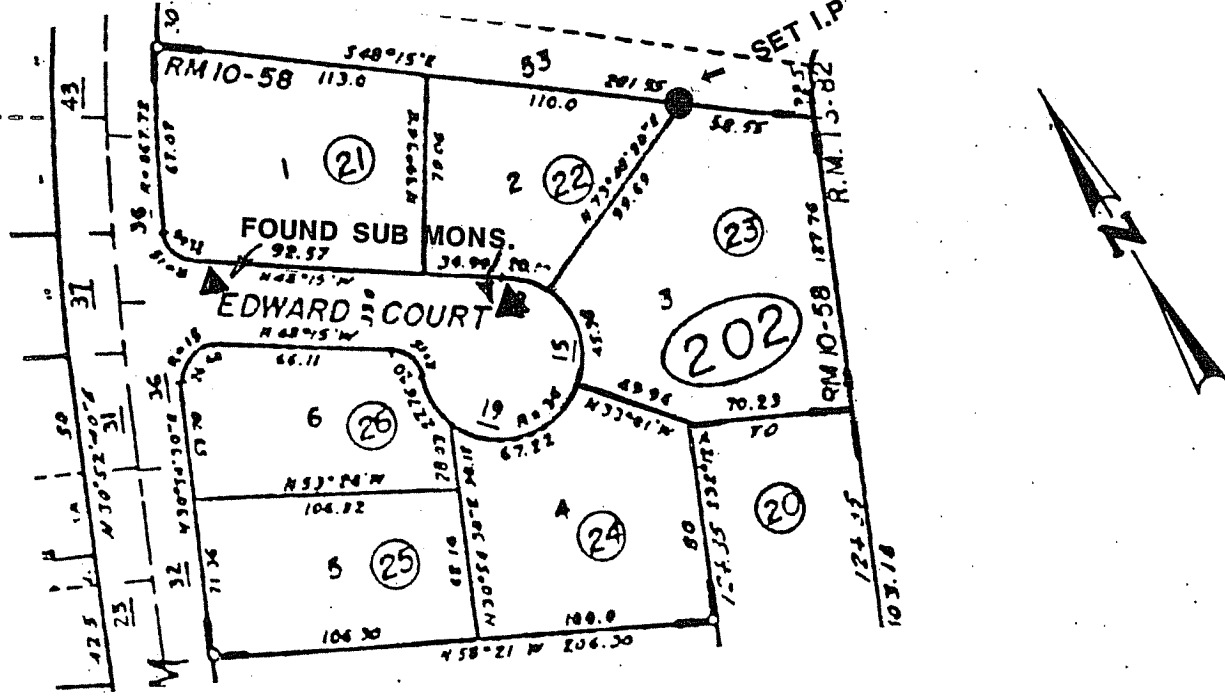
**SUBDIVISION MONUMENTS AS SHOWN**  
 10 RM-58

PHYSICAL DESCRIPTION OF MONUMENTS REBUILT OR PERPETUATED

**SET 3/4" IRON PIPE & PLUG R.C.E 15945**

CALIFORNIA COORDINATE SYSTEM ORDER: FIRST  SECOND  THIRD   
 STATIONS USED: NGS (USC & GS)  STATE  COUNTY  OTHER  STATION \_\_\_\_\_ STATION \_\_\_\_\_  
 ZONE \_\_\_\_\_ ELEVATION \_\_\_\_\_ NORTHINGS (N) \_\_\_\_\_ EASTINGS (E) \_\_\_\_\_

SKETCH: (Include reference tie or witness points, remarks and topo of area)

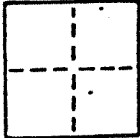


**SURVEYOR'S CERTIFICATE**  
 THIS CORNER RECORD WAS PREPARED BY ME OR UNDER MY DIRECTION IN CONFORMANCE WITH THE LAND SURVEYORS ACT ON January 17 1991  
 SIGNED: W. Edward White  
 L.S. or R.C.E. No.: 15,945

**COUNTY SURVEYOR'S CERTIFICATE**  
 THE CORNER RECORD WAS RECEIVED 1-18-91 AND EXAMINED AND FILED BY: \_\_\_\_\_ TITLE: \_\_\_\_\_ DOCUMENT No. \_\_\_\_\_ STATEMENT ON BACK OF SHEET YES  NO

# CORNER RECORD AP# 15-202 23

COUNTY OF MARIN T. \_\_\_\_\_ E. \_\_\_\_\_ MERIDIAN CALIFORNIA  
 CORNER TYPE: GOVT. CORNER  MEANDER  RANCHO  CONTROL  OTHER   
 CORNER IDENTIFICATION — DATE OF VISIT DEC. 19 90



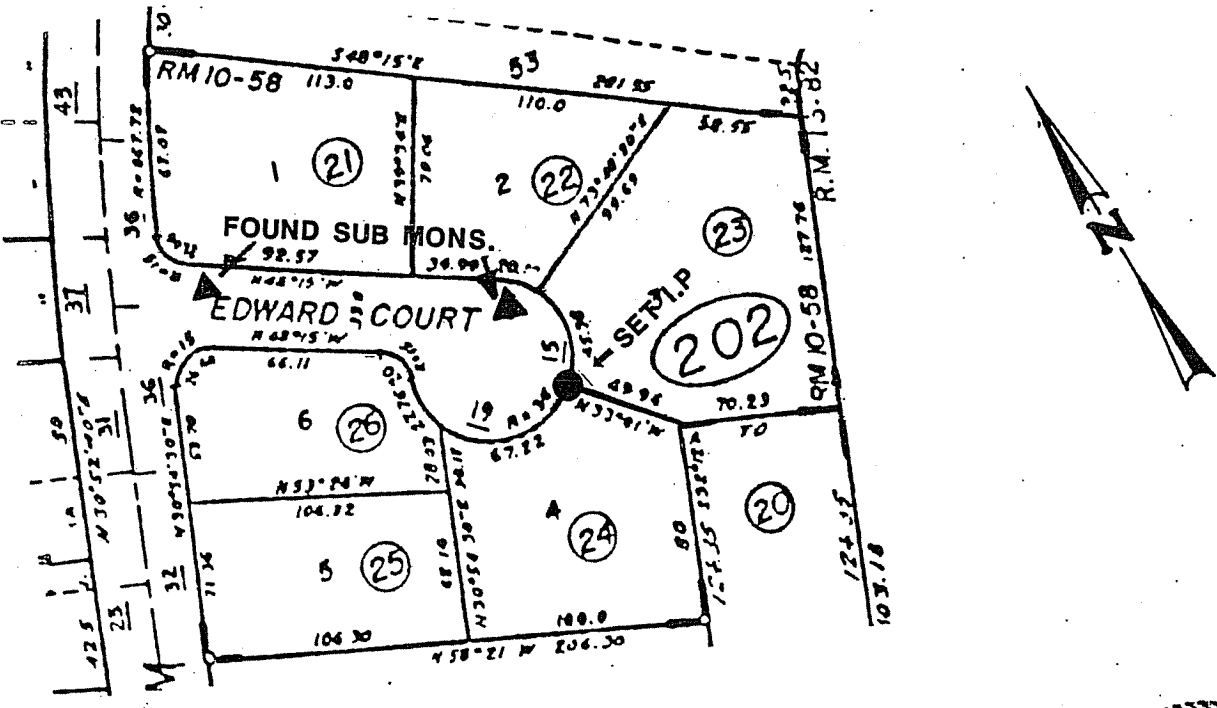
CORNER — LEFT AS FOUND  FOUND AND TAGGED  REESTABLISHED OBLITERATED CORNER  RESULT   
 PHYSICAL DESCRIPTION OF CORNER FOUND; EVIDENCE AND METHOD USED TO IDENTIFY OR REESTABLISH

**SUBDIVISION MONUMENTS AS SHOWN**  
**10 RM 58**

PHYSICAL DESCRIPTION OF MONUMENTS. RESULT OR PERPETUATED  
**SET 3/4" IRON PIPE & PLUG R.C.E 15945**

CALIFORNIA COORDINATE SYSTEM ORDER: FIRST  SECOND  THIRD   
 STATIONS USED: NGS (USC & GS)  STATE  COUNTY  OTHER  STATION \_\_\_\_\_ STATION \_\_\_\_\_  
 ZONE \_\_\_\_\_ ELEVATION \_\_\_\_\_ NORTHINGS (N) \_\_\_\_\_ EASTINGS (E) \_\_\_\_\_

SKETCH: (Include reference tie or witness points, remarks and topo of area)

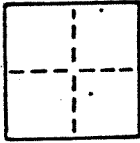


**SURVEYOR'S CERTIFICATE**  
 THIS CORNER RECORD WAS PREPARED BY ME OR UNDER MY DIRECTION IN CONFORMANCE WITH THE LAND SURVEYORS ACT ON January 1991  
 SIGNED: W. Edward White  
 L.S. or R.C.E. No. 15,945

**COUNTY SURVEYOR'S CERTIFICATE**  
 THE CORNER RECORD WAS RECEIVED AND EXAMINED AND FILED BY: \_\_\_\_\_ TITLE: \_\_\_\_\_ DOCUMENT No. \_\_\_\_\_ STATEMENT ON BACK OF SHEET YES  NO

# CORNER RECORD

COUNTY OF MARIN T. \_\_\_\_\_ R. \_\_\_\_\_ MERIDIAN \_\_\_\_\_ CALIFORNIA \_\_\_\_\_  
 CORNER TYPE: GOVT. CORNER  MEANDER  RANCHO  CONTROL  OTHER   
 CORNER IDENTIFICATION — DATE OF VISIT DEC. 1990



CORNER — LEFT AS FOUND  FOUND AND TAGGED  REESTABLISHED OBLITERATED CORNER  RESULT

PHYSICAL DESCRIPTION OF CORNER FOUND, EVIDENCE AND METHOD USED TO IDENTIFY OR REESTABLISH

## SUBDIVISION MONUMENTS AS SHOWN

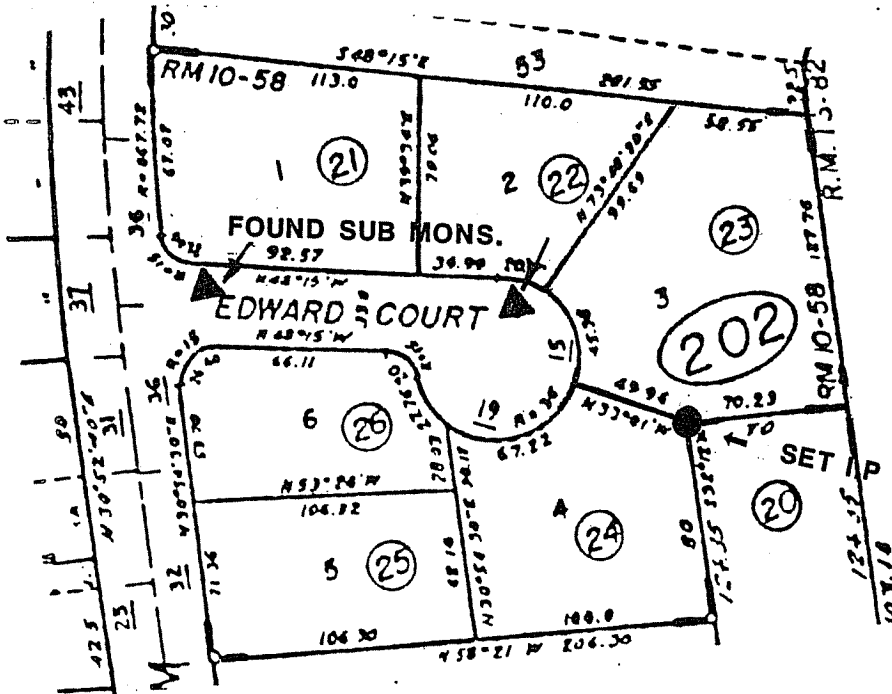
10 RM 58

PHYSICAL DESCRIPTION OF MONUMENTS. RESULT OR PERPETUATED

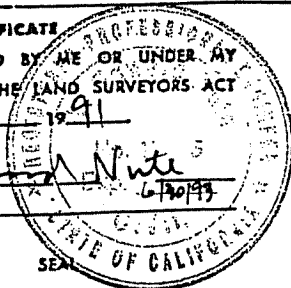
SET 3/4" IRON PIPE & PLUG R.C.E 15945

CALIFORNIA COORDINATE SYSTEM ORDER: FIRST  SECOND  THIRD   
 STATIONS USED: NGS (USC & GS)  STATE  COUNTY  OTHER  STATION \_\_\_\_\_ STATION \_\_\_\_\_  
 ZONE \_\_\_\_\_ ELEVATION \_\_\_\_\_ NORTHINGS (N) \_\_\_\_\_ EASTINGS (E) \_\_\_\_\_

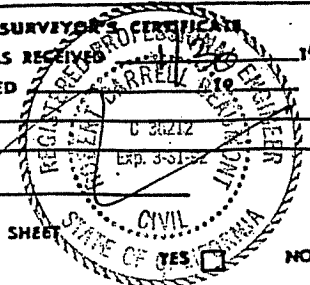
SKETCH: (Include reference tie or witness points, remarks and topo of area)



**SURVEYOR'S CERTIFICATE**  
 THIS CORNER RECORD WAS PREPARED BY ME OR UNDER MY DIRECTION IN CONFORMANCE WITH THE LAND SURVEYORS ACT ON January 17 1991  
 SIGNED: W. S. [Signature]  
 L.S. or R.C.E. No.: 15945



**COUNTY SURVEYOR'S CERTIFICATE**  
 THE CORNER RECORD WAS RECEIVED AND EXAMINED AND FILED BY: \_\_\_\_\_ TITLE: \_\_\_\_\_ DOCUMENT No. \_\_\_\_\_ STATEMENT ON BACK OF SHEET YES  NO

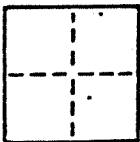


# CORNER RECORD AP# 15-202 23

COUNTY OF MARIN T. \_\_\_\_\_ R. \_\_\_\_\_ MERIDIAN \_\_\_\_\_ CALIFORNIA

CORNER TYPE: GOVT. CORNER  MEANDER  RANCHO  CONTROL  OTHER

CORNER IDENTIFICATION — DATE OF VISIT DEC. 19 90



CORNER — LEFT AS FOUND  FOUND AND TAGGED  REESTABLISHED OBLITERATED CORNER  RESULT

PHYSICAL DESCRIPTION OF CORNER FOUND, EVIDENCE AND METHOD USED TO IDENTIFY OR REESTABLISH

## SUBDIVISION MONUMENTS AS SHOWN

10 RM 58

PHYSICAL DESCRIPTION OF MONUMENTS. RESULT OR PERPETUATED

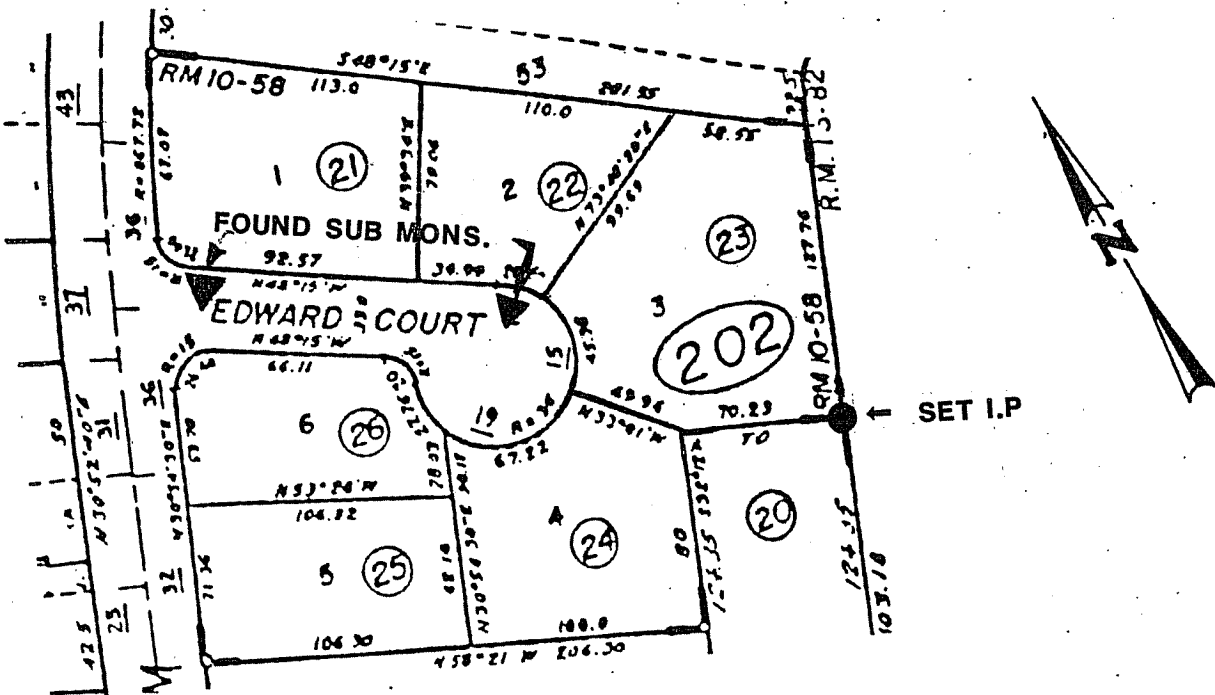
SET 3/4" IRON PIPE & PLUG R.C.E 15945

CALIFORNIA COORDINATE SYSTEM ORDER: FIRST  SECOND  THIRD

STATIONS USED: NGS (USC & GS)  STATE  COUNTY  OTHER  STATION \_\_\_\_\_ STATION \_\_\_\_\_

ZONE \_\_\_\_\_ ELEVATION \_\_\_\_\_ NORTHINGS (N) \_\_\_\_\_ EASTINGS (E) \_\_\_\_\_

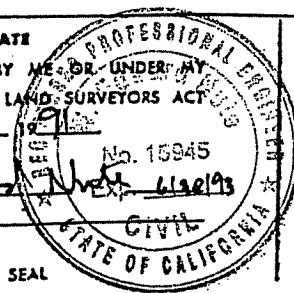
SKETCH: (Include reference tie or witness points, remarks and topo of area)



### SURVEYOR'S CERTIFICATE

THIS CORNER RECORD WAS PREPARED BY ME OR UNDER MY DIRECTION IN CONFORMANCE WITH THE LAND SURVEYORS ACT ON January 17

SIGNED: W. G. Schumacher  
L.S. or R.C.E. No. 15,945



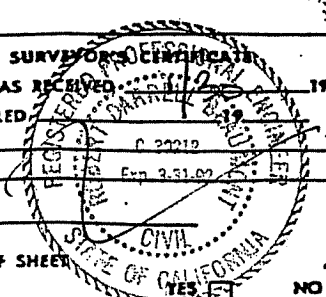
### COUNTY SURVEYOR'S CERTIFICATE

THE CORNER RECORD WAS RECEIVED AND EXAMINED AND FILED

BY: \_\_\_\_\_ TITLE: \_\_\_\_\_

DOCUMENT No. \_\_\_\_\_

STATEMENT ON BACK OF SHEET



YES  NO