

CORNER RECORD



JERRICO ASSOCIATES

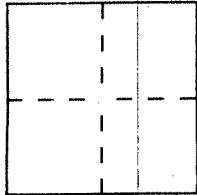
SUITE 27
77 MARK DRIVE
SAN RAFAEL, CA 94903

7403

Document Number 15-201-34/19

City of San Rafael County of Marin, California

Brief Legal Description Pcl. A 9 SURVEYS 3 (Northerly line)



CORNER TYPE

Government Corner Control
Meander Property
Rancho Other
Date of Survey August 18, 2000

COORDINATES
(Optional)

N. _____
E. _____
Zone _____ Datum _____
Elev. _____

Corner — Left as found Found and tagged Established Reestablished Rebuilt

Identification and type of corner found: Evidence used to identify or procedure used to establish or reestablish the corner:

(A) (B) (C) (D) Found points per
9 SURVEYS 3

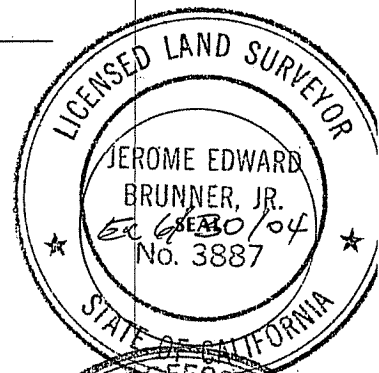
A description of the physical condition of the monument as found and as set or reset:

(E) (F) Set rebar and cap LS 3887.

SURVEYOR'S STATEMENT

This Corner Record was prepared by me or under my direction in conformance with the Land Surveyors Act on August 29 2000

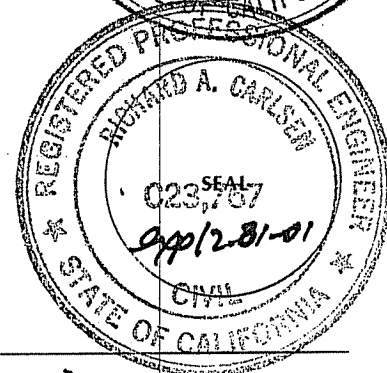
Signed [Signature] L.S. or R.C.E. Number LS 3887



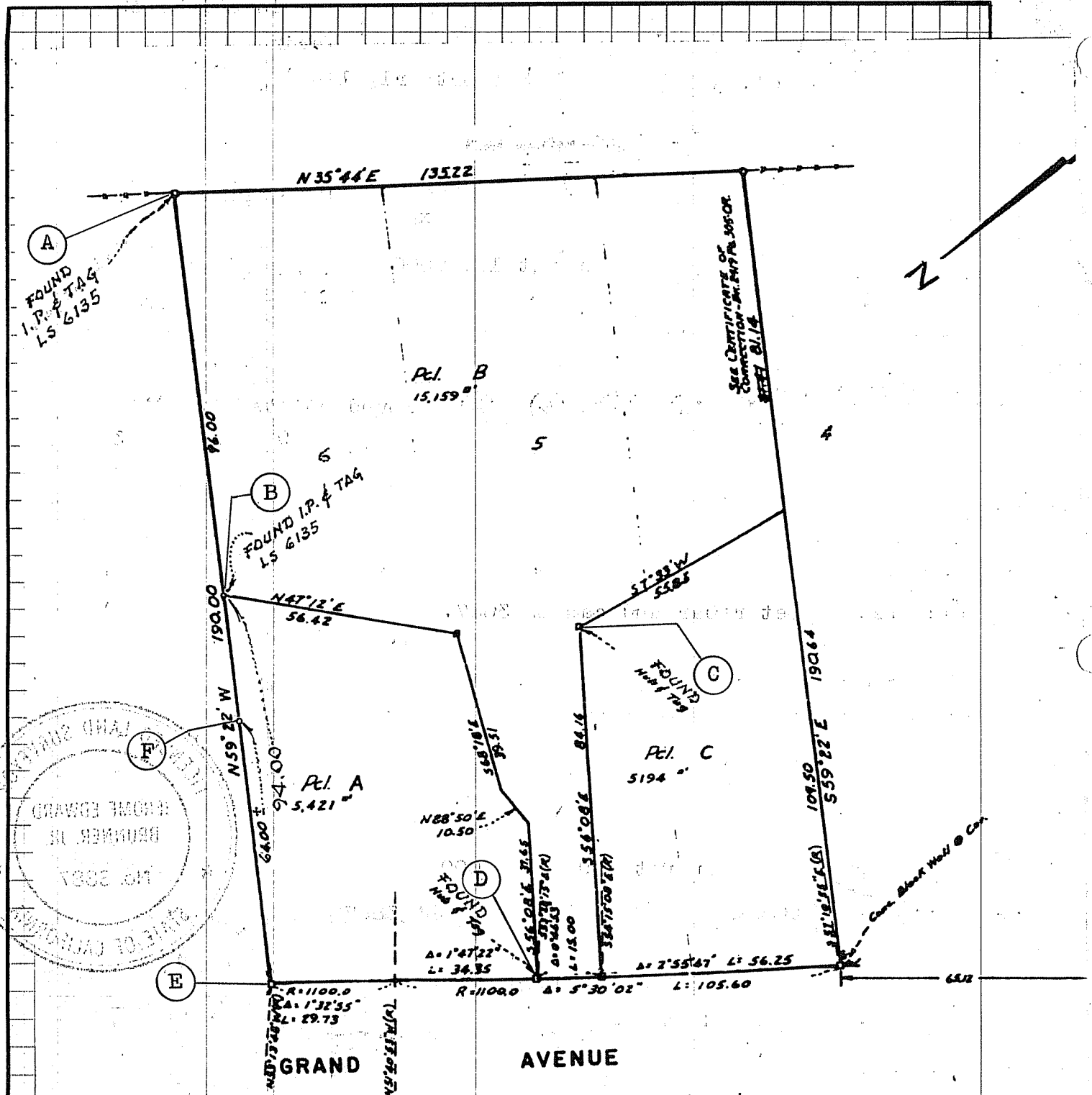
COUNTY SURVEYOR'S STATEMENT

This Corner Record was received AUGUST 31, 2000 and examined and filed AUGUST 31, 2000.

Signed Richard A. Carlse Title DEPUTY



County Surveyor's Comment _____



COUNTY SURVEYOR'S CERTIFICATE

I hereby certify that the foregoing is a true and correct copy of the original as recorded for comparison with the requirements of the Land Surveyor's Act, Chapter 1, Section 26000, of the Statutes of the State of California, on the 12th day of March, 1970.

Donald Edward Browne Jr.
County Surveyor

REGISTERED PROFESSIONAL SURVEYOR
DONALD EDWARD BROWNE JR.
No. 10,479
CIVIL
STATE OF CALIFORNIA

RECORDER'S CERTIFICATE

Filed this 12th day of March, 1970
at San Diego, California, in Book 9 of Maps to page 3
at the request of Dept. of Public Works

Fcc # 500
N.T. Giacomini
County Recorder
By Deputy Jack [Signature]

BASIS OF BEARING

S59°22'E Bearing along the
Southwesterly Line.

Serial No. 5263