

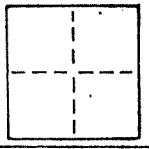
10 of 1 ✓
✓
✓

CORNER RECORD

COUNTY OF MARIN T. _____ R. _____ MERIDIAN _____ CALIFORNIA

CORNER TYPE: GOVT. CORNER MEANDER RANCHO CONTROL OTHER

CORNER IDENTIFICATION — DATE OF VISIT JUNE 19 85



A.P. # 15-143-21

CORNER — LEFT AS FOUND FOUND AND TAGGED REESTABLISHED OBLITERATED CORNER REBUILT

PHYSICAL DESCRIPTION OF CORNER FOUND; EVIDENCE AND METHOD USED TO IDENTIFY OR REESTABLISH

Found a 6" square concrete monument with 1/2" square bolt head with punch mark buried 2.5' near the most southerly corner of lot 32, "Amended Map of Del Mesa Marin County, Ca." recorded in book 5 of Maps at page 69, Marin County Records.

PHYSICAL DESCRIPTION OF MONUMENTS REBUILT OR PERPETUATED

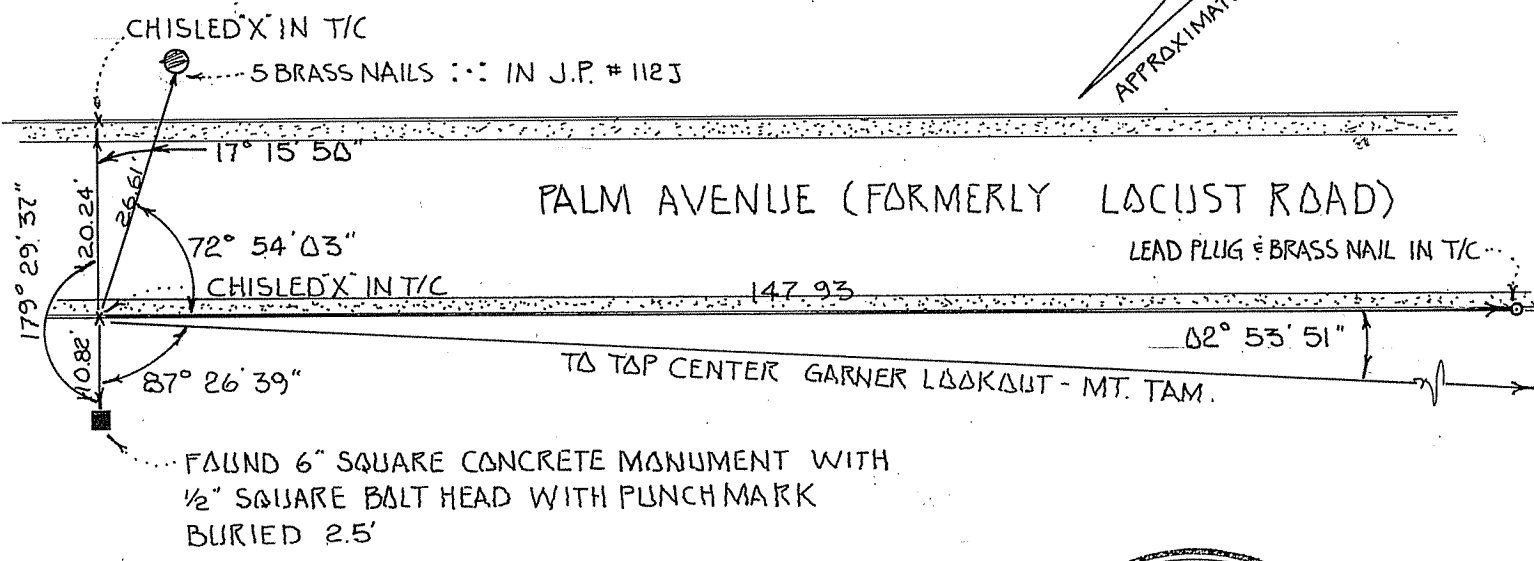
Established witness points as shown below.

CALIFORNIA COORDINATE SYSTEM ORDER: FIRST SECOND THIRD

STATIONS USED: NGS (USC & GS) STATE COUNTY OTHER STATION _____ STATION _____

ZONE _____ ELEVATION _____ NORTHINGS (Y) _____ EASTINGS (X) _____

SKETCH: (Include reference tie or witness points, remarks and topo of area)



REGISTERED LAND SURVEYOR'S CERTIFICATE

THIS CORNER RECORD WAS PREPARED BY ME OR UNDER MY DIRECTION IN CONFORMANCE WITH THE LAND SURVEYORS ACT ON _____ 19 _____

SIGNED: *[Signature]*

L.S. or R.C.E. No. No. 3775

STATE OF CALIFORNIA

REGISTERED PROFESSIONAL ENGINEER

THOMAS RYAN FULLER

COUNTY SURVEYOR'S CERTIFICATE

THE CORNER RECORD WAS RECEIVED JULY 11 19 85

AND EXAMINED AND FOUND CORRECT NOV 23 19 85

BY: *[Signature]*

TITLE: County Surveyor

DOCUMENT NO. _____

STATE OF CALIFORNIA

CIVIL

STATEMENT ON BACK OF SHEET

YES NO