

Anrig-Doyle

LICENSED LAND SURVEYORS CIVIL ENGINEERS
165 Helens Lane Mill Valley CA 94941 (415) 388-0087

CORNER RECORD

A.P. 15-121-03

COUNTY OF MARIN SAN RAFAEL CALIFORNIA

CORNER TYPE: PROPERTY CORNER

DATE OF VISIT: APRIL 13, 1994

CORNER -- LEFT AS FOUND FOUND AND TAGGED REESTABLISHED OBLITERATED CORNER REBUILT SET

PHYSICAL DESCRIPTION OF CORNER FOUND; EVIDENCE AND METHOD USED TO IDENTIFY OR REESTABLISH

1. CORNER SET BY USING MONUMENTS ON θ O.S. 91 "BASIS OF BEARING".

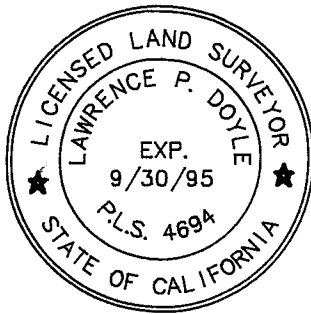
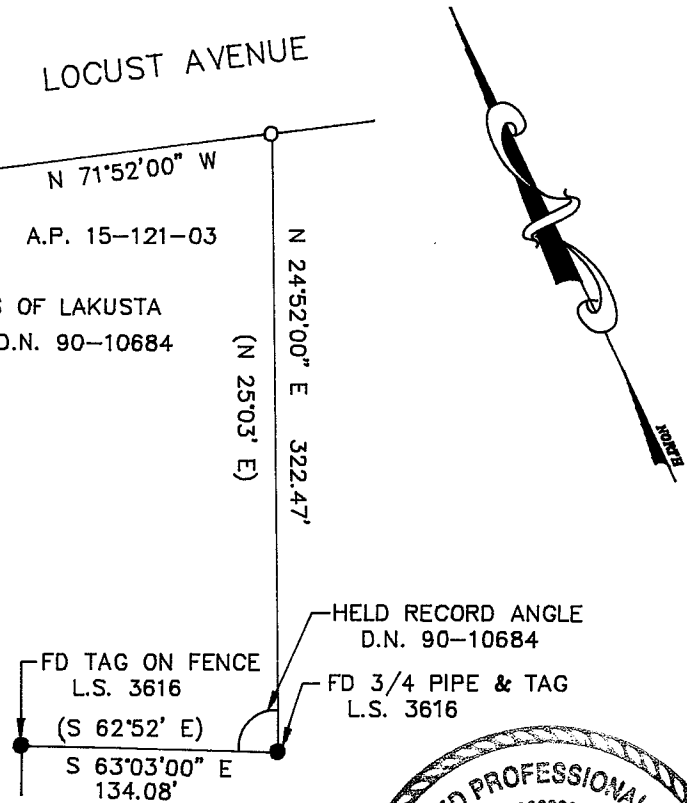
PHYSICAL DESCRIPTION OF MONUMENTS REBUILT OR PERPETUATED

SET 1/2 REBAR WITH CAP L.S. 4694

SKETCH:

(xx) RECORD

LOCUST AVENUE
N 71°52'00" W
A.P. 15-121-03
LANDS OF LAKUSTA
DEED D.N. 90-10684



SURVEYOR'S CERTIFICATE

THIS CORNER RECORD WAS PREPARED BY ME OR UNDER MY DIRECTION IN CONFORMANCE WITH THE LAND SURVEYORS ACT ON JUNE 27, 1994

SIGNED: Lawrence P. Doyle

L.S. or R.C.E. No.: 4694

COUNTY SURVEYOR'S CERTIFICATE

THE CORNER RECORD WAS RECEIVED 1-11-95 AND EXAMINED AND FILED 3-11-95

BY: [Signature] TITLE: 3-31-96

DOCUMENT NO. _____

STATEMENT ON BACK OF SHEET

