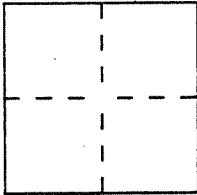


CORNER RECORD

Document Number 15-081-12

City of SAN RAFAEL County of MARIN, California

Brief Legal Description PROPERTY DESCRIBED D.N. 94-031539



CORNER TYPE

- Government Corner
- Meander
- Rancho
- Date of Survey \_\_\_\_\_
- Control
- Property
- Other

COORDINATES (Optional)

N. \_\_\_\_\_  
 E. \_\_\_\_\_  
 Zone \_\_\_\_\_ Datum \_\_\_\_\_  
 Elev. \_\_\_\_\_

Corner — Left as found  Found and tagged  Established  Reestablished  Rebuilt

Identification and type of corner found: Evidence used to identify or procedure used to establish or reestablish the corner:

CORNER WAS REESTABLISHED FROM  
MONUMENTS LOCATED IN MOUNTAIN  
VIEW AVE., MAP OF DOMINICAN  
GARDENS, 7 MAPS 46, MARIN COUNTY  
RECORDS

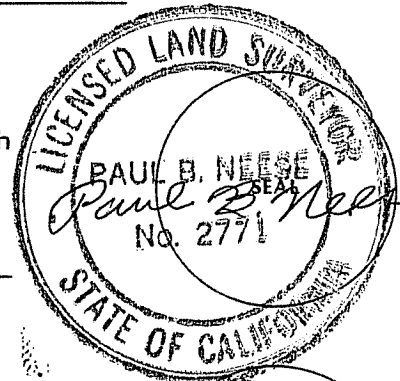
A description of the physical condition of the monument as found and as set or reset:

SET 1/2" RE BAR WITH PLASTIC CAP  
STAMPED L.S. 2771

SURVEYOR'S STATEMENT

This Corner Record was prepared by me or under my direction in conformance with  
 the Land Surveyors' Act on APRIL 6 1995

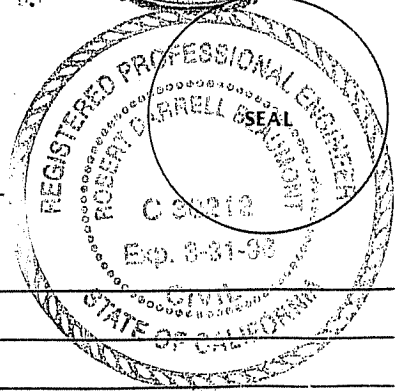
Signed Paul B. Neese L.S. or ~~P.E.~~ Number 2771



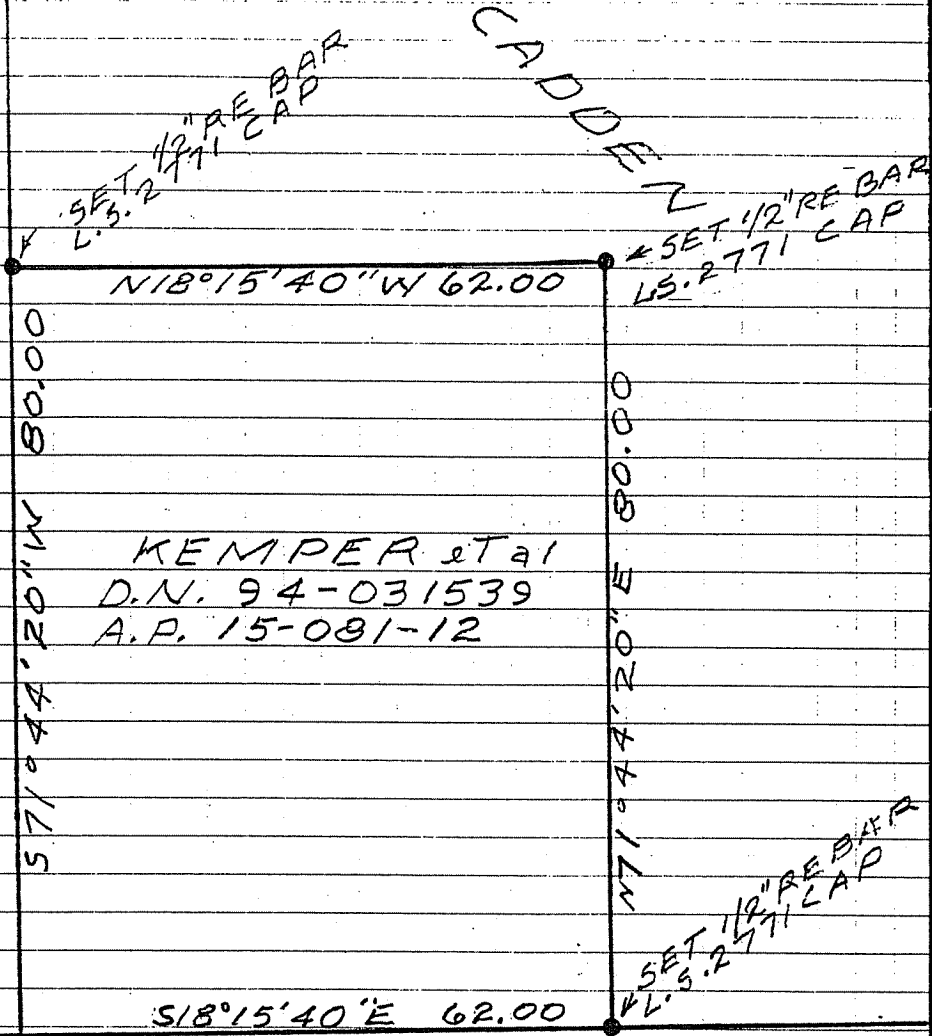
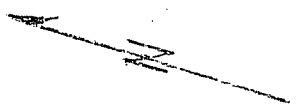
COUNTY SURVEYOR'S STATEMENT

This Corner Record was received 4-17 1995 and examined  
 and filed 4-18 1995.

Signed [Signature] Title DCS



County Surveyor's Comment \_\_\_\_\_



WAY  
D.N. 92-10124

KEMPER & TAL  
D.N. 94-031539  
A.P. 15-081-12

WILLIAMS ST.

SCALE 1" = 20'