

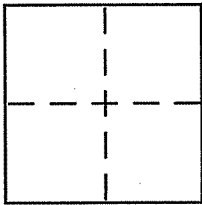
# CORNER RECORD

City of San Rafael

Document Number APN 015-073-01

County of Marin, California

Brief Legal Description Lands of Nolan Per 007 RM 46



### CORNER TYPE

Government Corner  Control   
 Meander  Property   
 Rancho  Other   
 Date of Survey \_\_\_\_\_

### COORDINATES (Optional)

N. \_\_\_\_\_  
 E. \_\_\_\_\_  
 Zone \_\_\_\_\_ NAD27  NAD83   
 NAD83 Epoch \_\_\_\_\_  
 Elev. \_\_\_\_\_  
 Vert. Datum: NGVD29  NAVD88   
 Meas. Units: Metric  Imperial

Corner - Left as found  Found and tagged  Established  Reestablished  Rebuilt

Identification and type of corner found: Evidence used to identify or procedure used to establish or reestablish the corner:  
Found Monuments Per 007 RM 46 (See Page 2 of 2)

A description of the physical condition of the monument as found and as set or reset: (See Page 2 of 2)

### SURVEYOR'S STATEMENT

This Corner Record was prepared by me or under my direction in conformance with the Land Surveyor's Act on 2/15/08

Signed [Signature] P.L.S or R.C.E. No. 6784



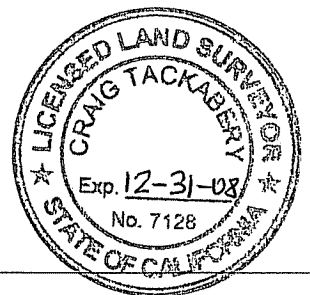
### COUNTY SURVEYOR'S STATEMENT

This Corner Record was received MARCH 4, 2008

and examined and filed MARCH 20, 2008

Signed [Signature] P.L.S or R.C.E. No. 7128

Title COUNTY SURVEYOR



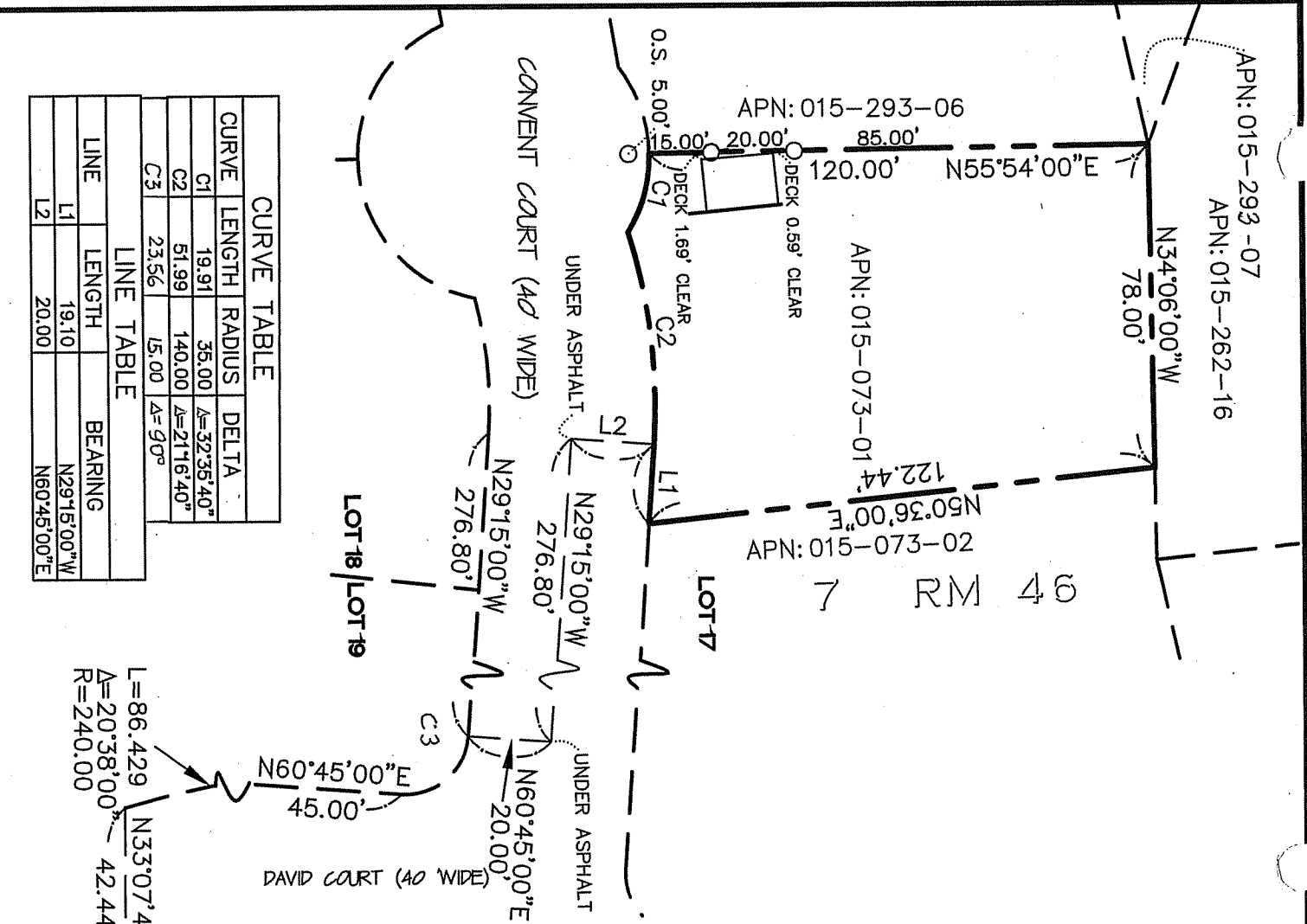
County Surveyor's Comment \_\_\_\_\_

APN: 015-293-07  
 APN: 015-262-16

APN: 015-293-06

APN: 015-073-01

APN: 015-073-02



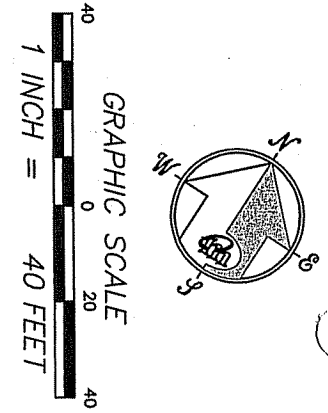
CURVE TABLE			
CURVE	LENGTH	RADIUS	DELTA
C1	19.91	35.00	$\Delta=32.35^{\circ}40''$
C2	51.99	140.00	$\Delta=21^{\circ}16'40''$
C3	23.56	45.00	$\Delta=90^{\circ}$

LINE TABLE		
LINE	LENGTH	BEARING
L1	19.10	N29°15'00"W
L2	20.00	N60°45'00"E

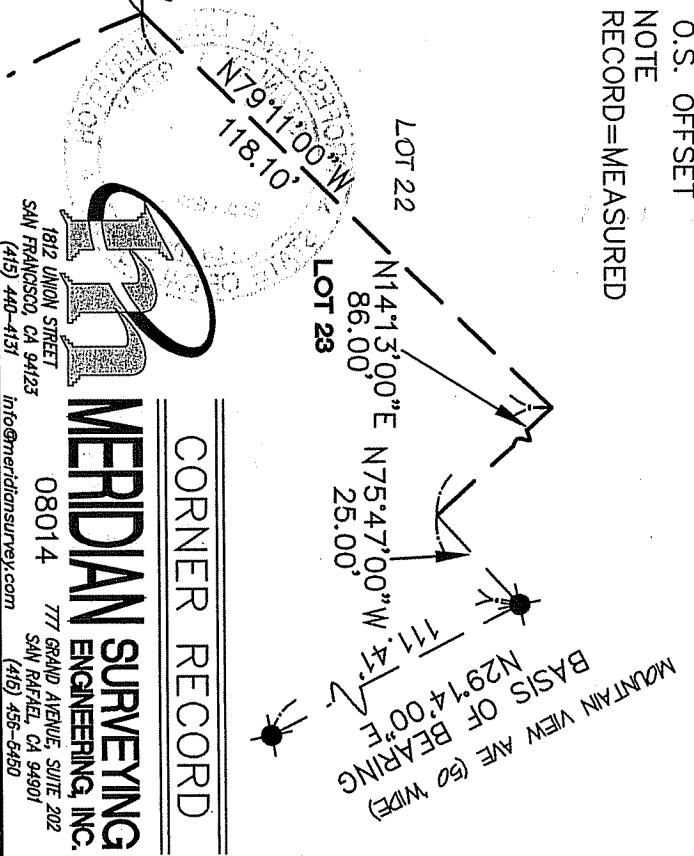
7 RM 46

**REFERENCE**  
 "MAP OF DOMINICAN GARDENS, SAN RAFAEL CALIFORNIA" FILED FOR RECORD OCTOBER 4 1951 IN VOLUME 7 OF MAPS, AT PAGE 46, MARIN COUNTY RECORDS.



**LEGEND**

- FOUND STANDARD STREET MONUMENTS PER 7 RM 46
- SET NAIL AND BRASS TAG PLS 6784
- ⊗ SET 5/8" REBAR WITH CAP, PLS 6784
- O.S. OFFSET
- NOTE
- RECORD=MEASURED



CORNER RECORD

**Meridian Surveying, Inc.**  
 1812 UNION STREET  
 SAN FRANCISCO, CA 94123  
 (415) 440-4131  
 info@meridiansurvey.com  
 08014 777 GRAND AVENUE, SUITE 202  
 SAN RAFAEL, CA 94901  
 (415) 458-6450