

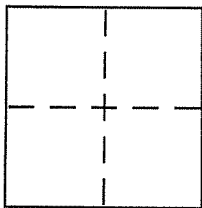
CORNER RECORD

Document Number APN 15-071-18

City of SAN RAFAEL

County of MARIN, California

Brief Legal Description PARCEL 1, DAVID COURT SUBDIVISION, VOLUME 12 OF MAPS, PAGE 50 M.C.R.



CORNER TYPE

Government Corner Control
 Meander Property
 Rancho Other
 Date of Survey _____

COORDINATES (Optional)

N. _____
 E. _____
 Zone _____ NAD27 NAD83
 NAD83 Epoch _____
 Elev. _____
 Vert. Datum: NGVD29 NAVD88
 Meas. Units: Metric Imperial

Corner - Left as found Found and tagged Established Reestablished Rebuilt

Identification and type of corner found: Evidence used to identify or procedure used to establish or reestablish the corner:

FOUND CENTERLINE MONUMENTS ON DAVID COURT
FOUND 1/2" REBAR TAGGED LS 3887 @ WEST CORNER PARCEL 1
(SEE CORNER RECORD APN: 015-071-019)

A description of the physical condition of the monument as found and as set or reset: SET 3/4" IRON PIPE
TAGGED LS 4483 AT RECORD POSITION PER SAID DAVID COURT
SUBDIVISION, VOL 12 MAPS 50 M.C.R. FOR PARCEL 1 AS SHOWN
ON PAGE 2 OF 2 HEREIN

SURVEYOR'S STATEMENT

This Corner Record was prepared by me or under my direction in conformance with the Land Surveyor's Act on OCTOBER 21, 2010

Signed Fred M. Phelps P.L.S. or R.C.E. No. 4483



COUNTY SURVEYOR'S STATEMENT

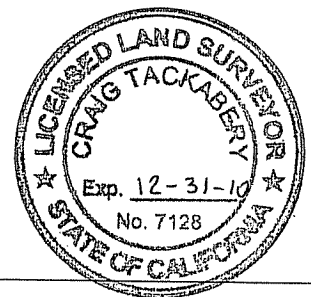
This Corner Record was received OCTOBER 22, 2010

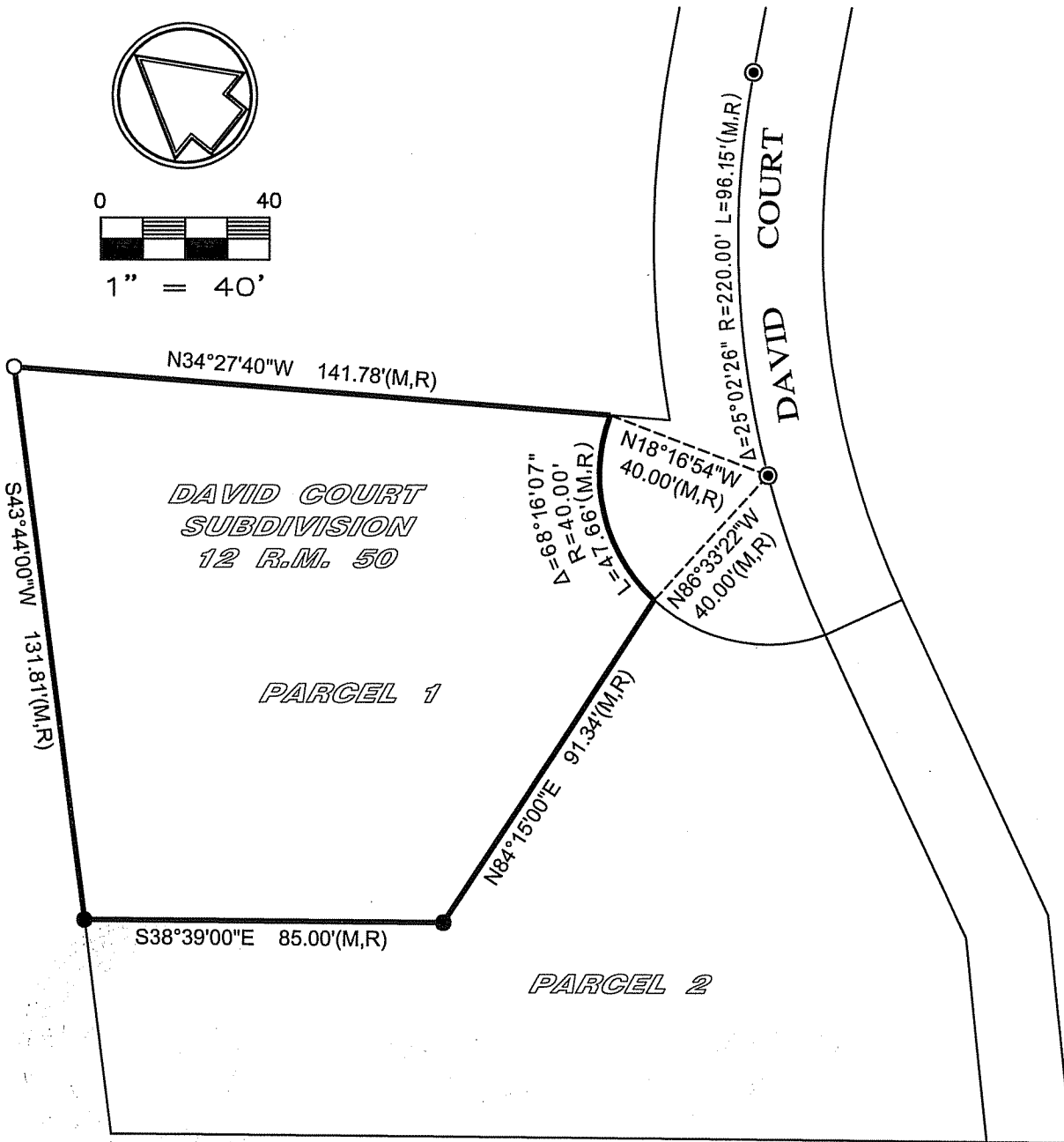
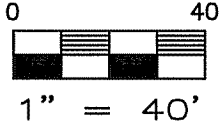
and examined and filed NOVEMBER 3, 2010

Signed [Signature] P.L.S. or R.C.E. No. 7128

Title COUNTY SURVEYOR

County Surveyor's Comment _____





Legend

- = 3/4" iron pipe set (tagged LS 4483)
- ⊙ = Found standard street monument (per 12 R.M. 50)
- = Found 1/2" rebar (tagged LS 3887 per Corner Record)
- R = David Court Subdivision / 12 R.M. 54
- M = Measured