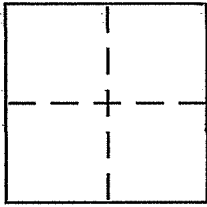


**CORNER RECORD**

Document Number 15.041.45  
City of SAN RAFAEL County of MARIN, California

Brief Legal Description LANDS OF FLYNN; RETRACED PER 210594 & 30572



**CORNER TYPE**

Government Corner  Control   
Meander  Property   
Rancho  Other   
Date of Survey 10/4/2007

**COORDINATES (Optional)**

N. \_\_\_\_\_  
E. \_\_\_\_\_  
Zone \_\_\_\_\_ NAD27  NAD83   
NAD83 Epoch \_\_\_\_\_  
Elev. \_\_\_\_\_  
Vert. Datum: NGVD29  NAVD88   
Meas. Units: Metric  Imperial

Corner - Left as found  Found and tagged  Established  Reestablished  Rebuilt

Identification and type of corner found: Evidence used to identify or procedure used to establish or reestablish the corner:

FOUND ORIGINAL OLD HUB AT THE SOUTHWESTERLY CORNER OF THE LANDS OF McCONE (AT THE EASTERLY LINE OF HEARFIELD LANE WITH THE INTERSECTION OF THE NORTHERLY LINE OF LINDEN LANE) AS SHOWN UPON 30572; see sketch on Reverse Side

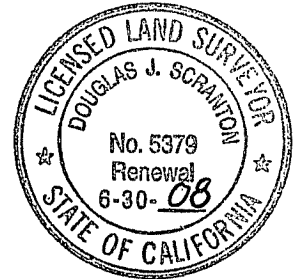
A description of the physical condition of the monument as found and as set or reset:

REMOVED OLD 2x2 HUB (DETERIORATED), (TAG GONE) & RESET 1/2" REBAR WITH PLS PLASTIC CAP 5379 AFFIXED TO TOP & DRIVEN FLUSH WITH SURROUNDING GRADE TO PERPETUATE HUB POSITION

**SURVEYOR'S STATEMENT**

This Corner Record was prepared by me or under my direction in conformance with the Land Surveyor's Act on October 16 2007

Signed Douglas J. Scranton P.L.S or R.C.E. No. PLS 5379



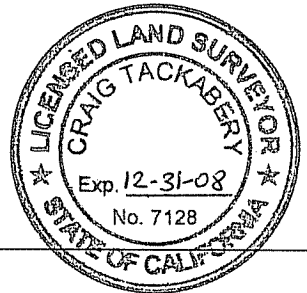
**COUNTY SURVEYOR'S STATEMENT**

This Corner Record was received OCTOBER 17, 2007

and examined and filed NOVEMBER 19, 2007

Signed [Signature] P.L.S or R.C.E. No. 7128

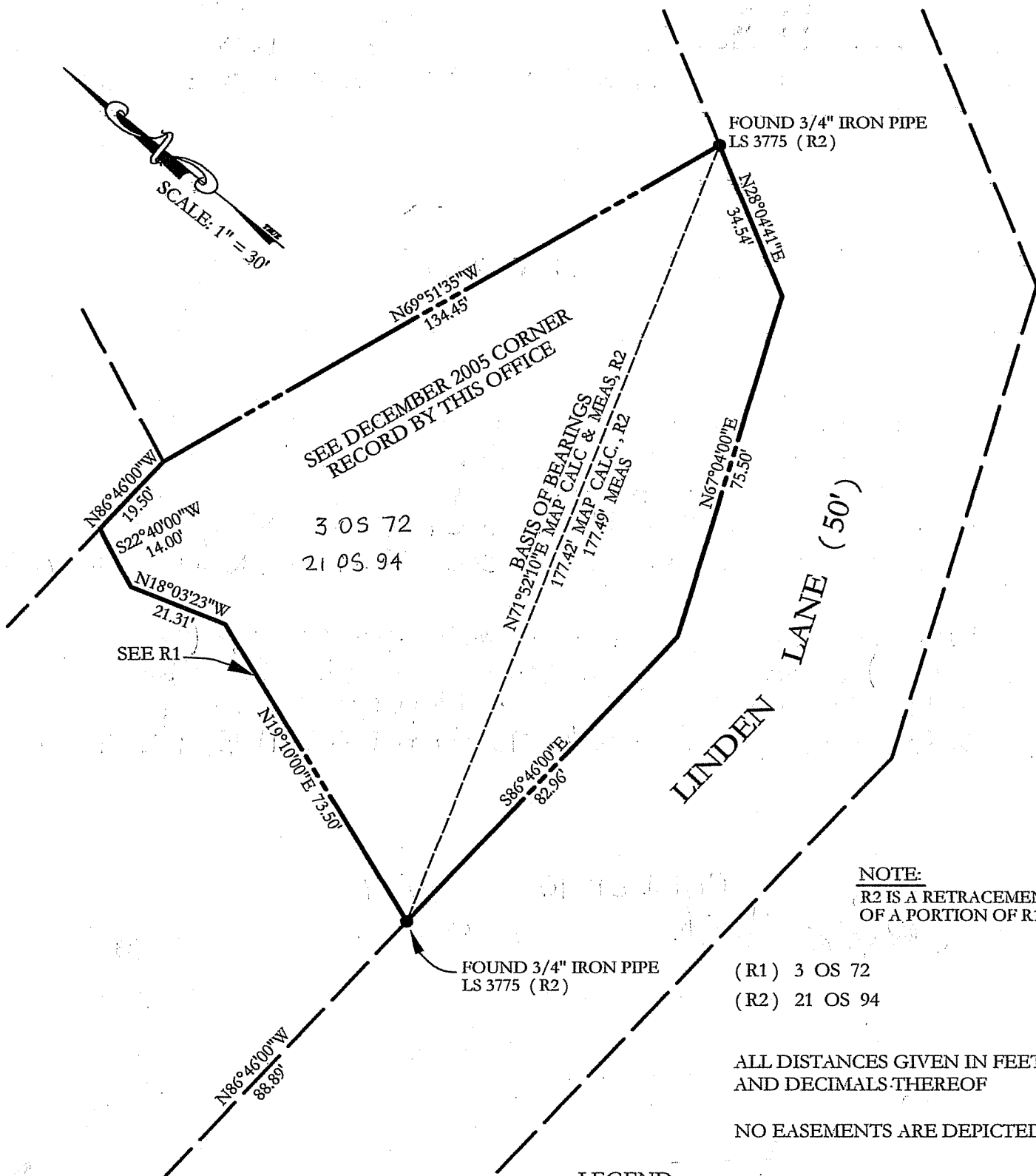
Title COUNTY SURVEYOR



County Surveyor's Comment \_\_\_\_\_

PREPARED BY: DJ SCRANTON SURVEYING NOVATO, CA

SCALE: 1" = 30'



NOTE:  
R2 IS A RETRACEMENT  
OF A PORTION OF R1

(R1) 3 OS 72  
(R2) 21 OS 94

ALL DISTANCES GIVEN IN FEET  
AND DECIMALS THEREOF

NO EASEMENTS ARE DEPICTED

LEGEND

- SET 1/2" REBAR/PLS 5379
- FOUND MONUMENTATION AS NOTED

BASIS OF BEARINGS

TAKEN AS N71°52'10"E BETWEEN POINTS AS SHOWN  
AND AS SAID POINTS ARE SHOWN UPON R2