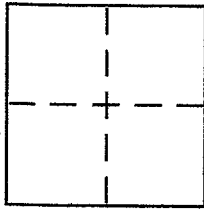


CORNER RECORD

Document Number 15.041.45
City of SAN RAFAEL County of MARIN, California

Brief Legal Description LANDS OF FLYNN; RETRACED PER 21 05 94



CORNER TYPE

Government Corner Control
Meander Property
Rancho Other
Date of Survey 11.4.2005

COORDINATES (Optional)

N. _____
E. _____
Zone _____ NAD27 NAD83
NAD83 Epoch _____
Elev. _____
Vert. Datum: NGVD29 NAVD88
Meas. Units: Metric Imperial

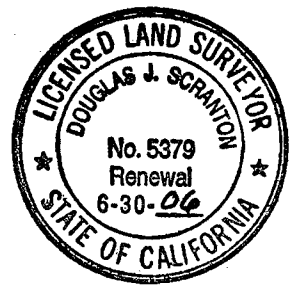
Corner - Left as found Found and tagged Established Reestablished Rebuilt

Identification and type of corner found: Evidence used to identify or procedure used to establish or reestablish the corner:
REESTABLISH A PORTION OF THE WESTERLY LINE OF THE
LANDS OF JAMES F. MCCOY ET UX (NOW FLYNN) AS SHOWN
UPON 3 05 72 & AS RETRACED PER 21 05 94. SEE SKETCH ON
REVERSE SIDE FOR DETAILS OF POINTS FOUND THAT WERE SET
PER 21 05 94 TO RECREATE THE LINE AS ORIGINALLY SHOWN ON 3 05 72

A description of the physical condition of the monument as found and as set or reset:
UNLESS NOTED OTHERWISE ON SKETCH ON REVERSE SIDE
SET 1/2" REBAR WITH PLS CAP AFFIXED TO TOP LABELED
SCRANTON PLS 5379 & DRIVEN FLUSH TO SURROUNDING
GRADE

SURVEYOR'S STATEMENT

This Corner Record was prepared by me or under my direction in conformance with
the Land Surveyor's Act on DECEMBER 23 2005
Signed Douglas J. Scranton P.L.S or R.C.E. No. PLS 5379



COUNTY SURVEYOR'S STATEMENT

This Corner Record was received DECEMBER 27, 2005
and examined and filed JANUARY 24, 2006
Signed [Signature] P.L.S or R.C.E. No. 7128
Title COUNTY SURVEYOR

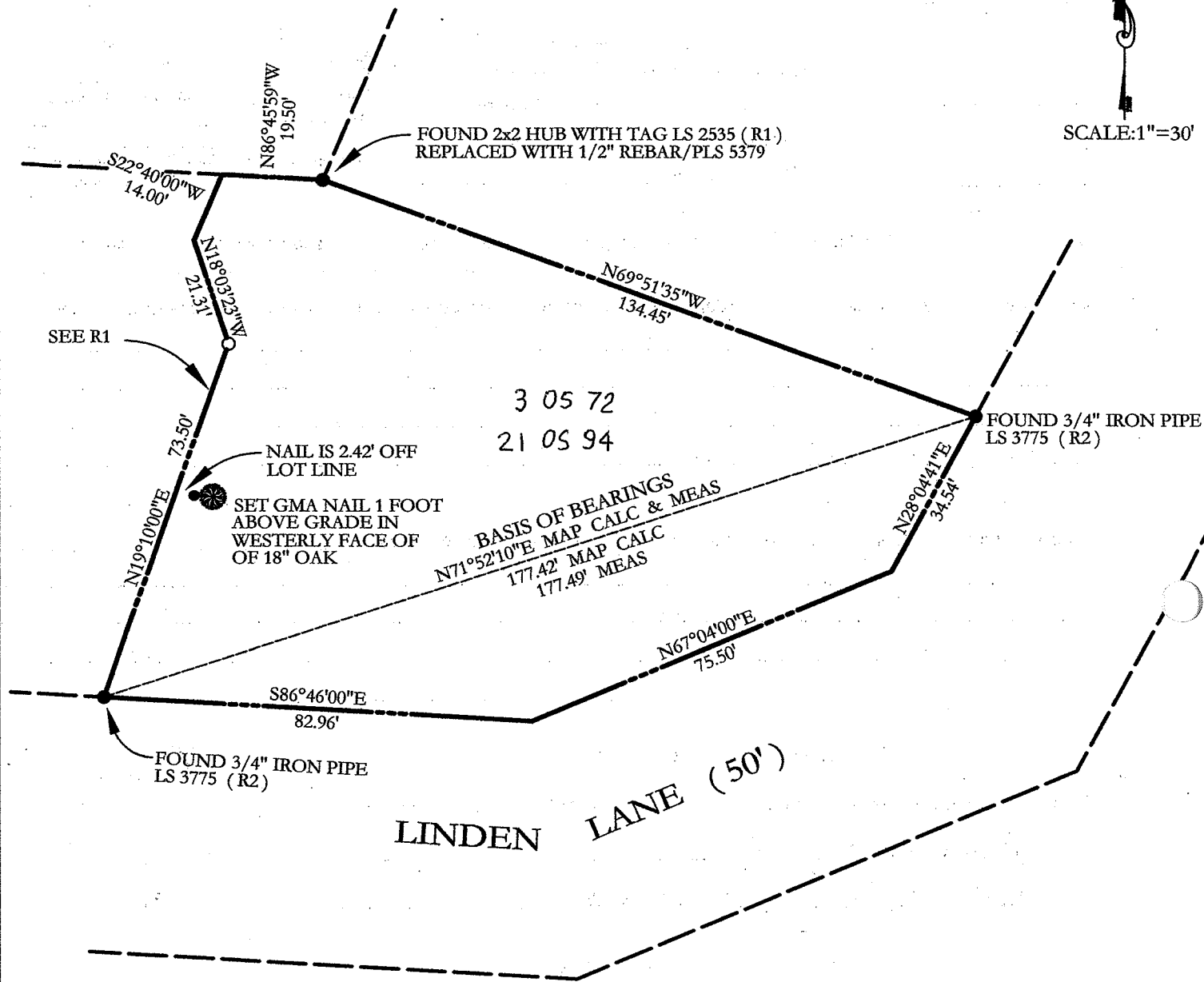


County Surveyor's Comment _____

Prepared by: DJ SCRANTON SURVEYING NOVATO, CALIFORNIA

NOTE:
R2 IS A RETRACEMENT
OF A PORTION OF R1

SCALE: 1"=30'



LEGEND

- SET 1/2" REBAR/PLS 5379
- FOUND MONUMENTATION AS NOTED

BASIS OF BEARINGS

TAKEN AS N71°52'10"E BETWEEN POINTS AS SHOWN
AND AS SAID POINTS ARE SHOWN UPON R2

(R1) 3 OS 72

(R2) 21 OS 94

ALL DISTANCES GIVEN IN FEET
AND DECIMALS THEREOF

NO EASEMENTS ARE DEPICTED