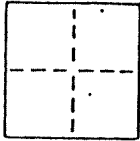


CORNER RECORD

COUNTY OF MARIN T. _____ R. _____ MERIDIAN _____ CALIFORNIA

CORNER TYPE: GOVT. CORNER MEANDER RANCHO CONTROL OTHER

CORNER IDENTIFICATION — DATE OF VISIT 10-17-88 19__



CORNER — LEFT AS FOUND FOUND AND TAGGED REESTABLISHED OBLITERATED CORNER REBUILT

PHYSICAL DESCRIPTION OF CORNER FOUND; EVIDENCE AND METHOD USED TO IDENTIFY OR REESTABLISH

CORNER RESET IN POSITION SHOWN ON 3 OS 72 PER FOUND 3/4" IRON PIPES ON WESTERLY LINE AS SHOWN ON 21 OS 94.

PHYSICAL DESCRIPTION OF MONUMENTS REBUILT OR PERPETUATED

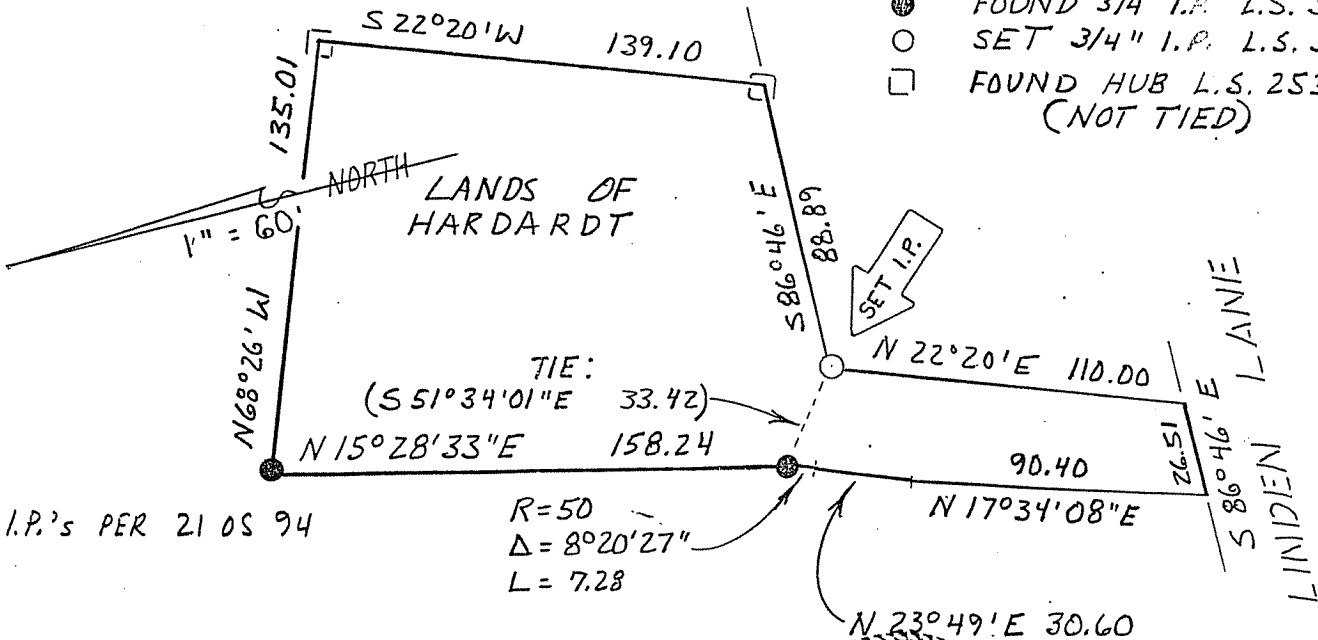
SET 3/4" IRON PIPE TAGGED L.S. 5296

A.P.N. # 15-041-02

CALIFORNIA COORDINATE SYSTEM ORDER: FIRST SECOND THIRD
STATIONS USED: NGS (USC & OS) STATE COUNTY OTHER STATION _____ STATION _____
ZONE _____ ELEVATION _____ NORTHINGS (Y) _____ EASTINGS (X) _____

SKETCH: (Include reference file or witness points, remarks and topo of area)

HUBS PER 3 OS 72



LEGEND

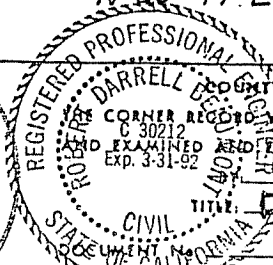
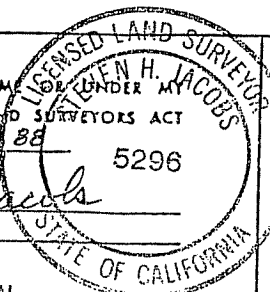
- FOUND 3/4" I.P. L.S. 3775
- SET 3/4" I.P. L.S. 5296
- FOUND HUB L.S. 2535 (NOT TIED)

SURVEYOR'S CERTIFICATE

THIS CORNER RECORD WAS PREPARED BY ME OR UNDER MY DIRECTION IN CONFORMANCE WITH THE LAND SURVEYORS ACT ON 10-21-88 19__

SIGNED: Steven H. Jacobs 5296

L.S. or R.C.E. No. L.S. 5296



COUNTY SURVEYOR'S CERTIFICATE

THIS CORNER RECORD WAS RECEIVED 10/21 19__
AND EXAMINED AND FILED 10/24 19__

TITLE: DCS

STATEMENT ON BACK OF SHEET