

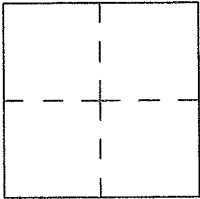
CORNER RECORD

Document number A.P.N. 015-032-04

City of SAN RAFAEL

County of MARIN, California

Brief Legal Description LOT 10 AS SHOWN UPON "GLEN PARK SUBD., UNIT TWO", 8 R.M. 31
MARIN COUNTY RECORDS



CORNER TYPE

Government Corner Control
Meander Property
Rancho Other
Date of Survey _____

COORDINATES

N. _____
E. _____
Zone _____ Datum _____
Elev. _____

Corner-- Left as found found and tagged Established Reestablished Rebuilt

Identification and type of corner found: Evidence used to identify or procedure used to establish or reestablish the corner:
UTILIZED STREET CENTERLINE WELL MONUMENTS AS SHOWN UPON 8 R.M. 31 AS A BASIS OF
BEARINGS TO MONUMENT THE PROPERTY CORNERS OF SAID LOT 10, 8 R.M. 31,
MARIN COUNTY RECORDS

A description of the physical condition of the monument as found and as set or reset. _____
STREET WELL MONUMENTS MEASURED PER 8 R.M. 31, AND WERE
DEEMED UNDISTURBED, AND ARE SHOWN ON THE ATTACHED DIAGRAM.

SURVEYOR'S STATEMENT

This Corner Record was prepared by me or under my direction in conformance with
the Land Surveyor's Act on April 1 2013.

Signed [Signature] L.S. Number 7744



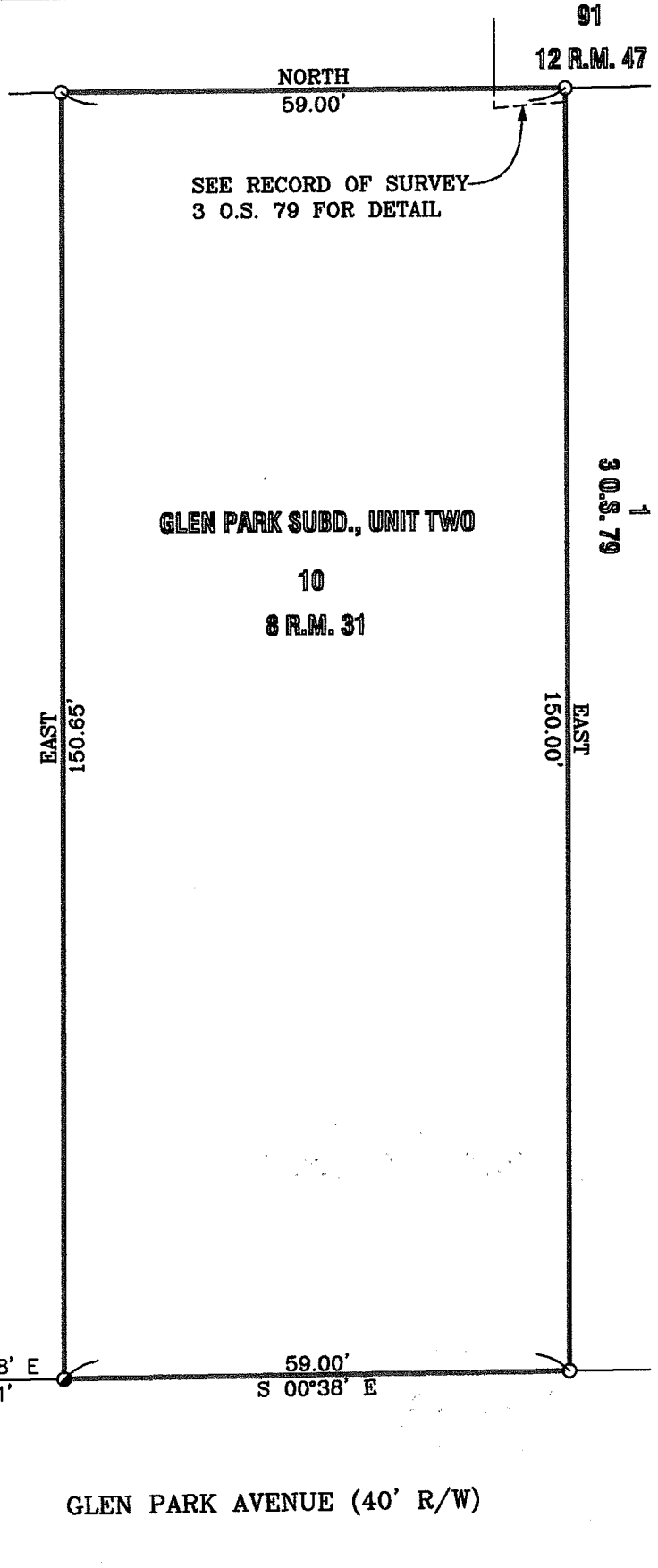
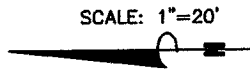
COUNTY SURVEYOR'S STATEMENT

This Corner Record was received APRIL 10, 2013 and examined
and filed MAY 14th 2013

Signed [Signature] Title DEPUTY CO. SURV.



County Surveyor's Comment _____



- FOUND WELL MONUMENT PER 8 R.M. 31
- SET 1/2" REBAR & CAP, P.L.S. 7744
- FOUND NAIL & BRASS TAG, P.L.S. 5290
PER CORNER RECORD, APN 015-032-03

