

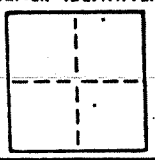
1 of 3  
A.P. # 15-021-37

# CORNER RECORD

COUNTY OF Marin T. \_\_\_\_\_ R. \_\_\_\_\_ MERIDIAN \_\_\_\_\_ CALIFORNIA

CORNER TYPE: GOVT. CORNER  MEANDER  RANCHO  CONTROL  OTHER

CORNER IDENTIFICATION — DATE OF VISIT \_\_\_\_\_ 19\_\_\_\_



CORNER — LEFT AS FOUND  FOUND AND TAGGED  REESTABLISHED OBLITERATED CORNER  REBUILT

### PHYSICAL DESCRIPTION OF CORNER FOUND; EVIDENCE AND METHOD USED TO IDENTIFY OR REESTABLISH

Set a brass tag "LS 4788" at the most northerly corner of Lot 2 of "Record of Survey Division of the Lands of Donald Weber et ux" filed in Book 8 of Surveys at Page 7, Marin County Records by and per said map, from which point a found tag "LS 2535" said by said map to be at the most northerly corner bears S 40°46'06" E 4.19 feet.  
A.P. 15-021-37

### PHYSICAL DESCRIPTION OF MONUMENTS REBUILT OR PERPETUATED

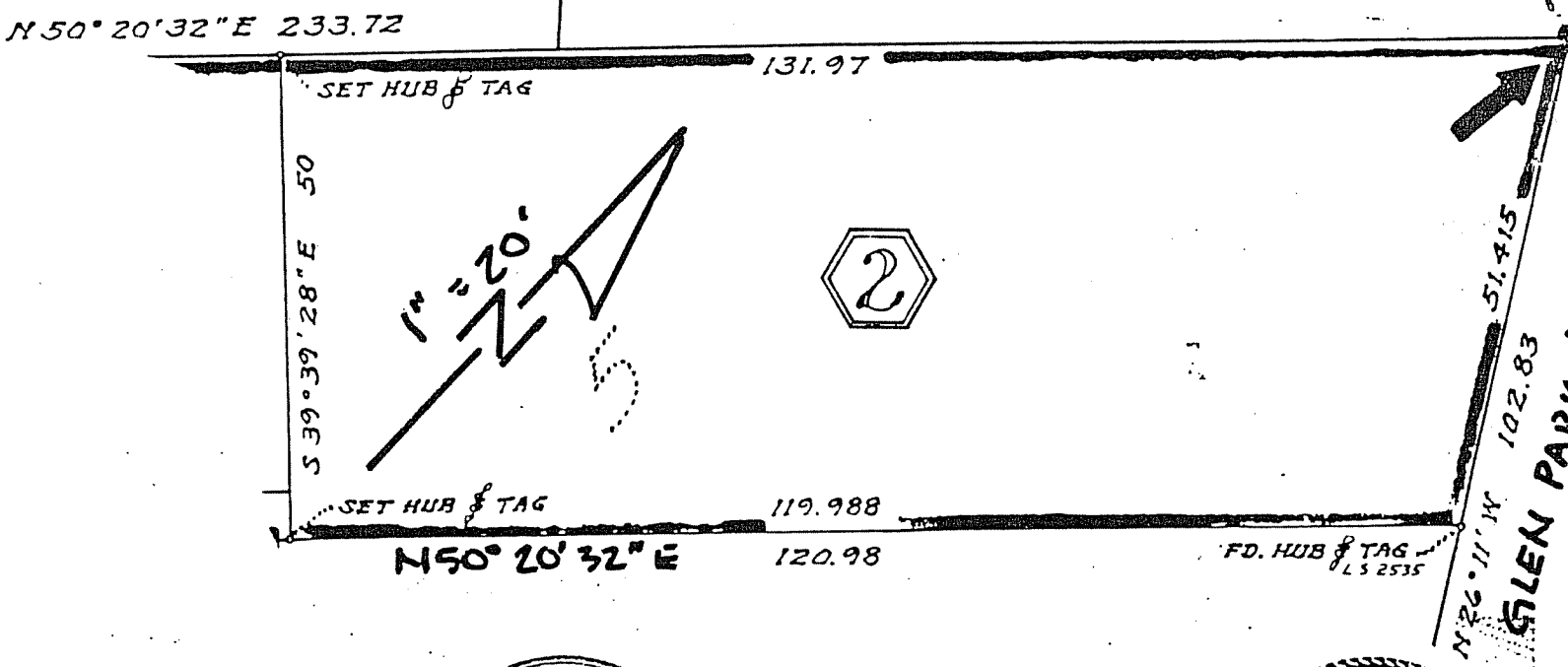
As shown

CALIFORNIA COORDINATE SYSTEM ORDER: FIRST  SECOND  THIRD

STATIONS USED: NGS (USC & GS)  STATE  COUNTY  OTHER  STATION \_\_\_\_\_

ZONE \_\_\_\_\_ ELEVATION \_\_\_\_\_ NORTHINGS (Y) \_\_\_\_\_ EASTINGS (X) \_\_\_\_\_

### SKETCH: (Include reference tie or witness points, remarks and topo of area)



**SURVEYOR'S CERTIFICATE**

THIS CORNER RECORD WAS PREPARED BY ME OR UNDER MY DIRECTION IN CONFORMANCE WITH THE LAND SURVEYORS ACT ON July 7, 1989 No. 4788 19 89

SIGNED: [Signature]

L.S. or R.C.E. No.: LS 4788 CALIFORNIA

**COUNTY SURVEYOR'S CERTIFICATE**

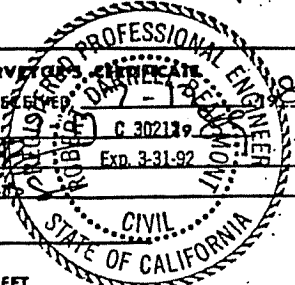
THE CORNER RECORD WAS RECEIVED AND EXAMINED AND FILED C 302139 Exp. 3-31-92

BY: [Signature]

TITLE: [Signature]

DOCUMENT No. \_\_\_\_\_

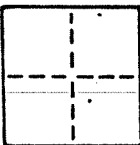
STATEMENT ON BACK OF SHEET YES  NO



CORNER RECORD

2073  
A.P. #15-021-37

COUNTY OF Marin T. \_\_\_\_\_ R. \_\_\_\_\_ MERIDIAN \_\_\_\_\_ CALIFORNIA  
CORNER TYPE: GOVT. CORNER  MEANDER  RANCHO  CONTROL  OTHER   
CORNER IDENTIFICATION — DATE OF VISIT \_\_\_\_\_ 19\_\_\_\_



CORNER — LEFT AS FOUND  FOUND AND TAGGED  REESTABLISHED OBLITERATED CORNER  RESULT

PHYSICAL DESCRIPTION OF CORNER FOUND; EVIDENCE AND METHOD USED TO IDENTIFY OR REESTABLISH

Set a 3/4" iron pipe with plastic plug "LS 4788" at the most westerly corner of Lot 2 of "Record of Survey Division of the Lands of Donald Weber et ux" filed in Book 8 of Surveys at Page 7, Marin County Records.

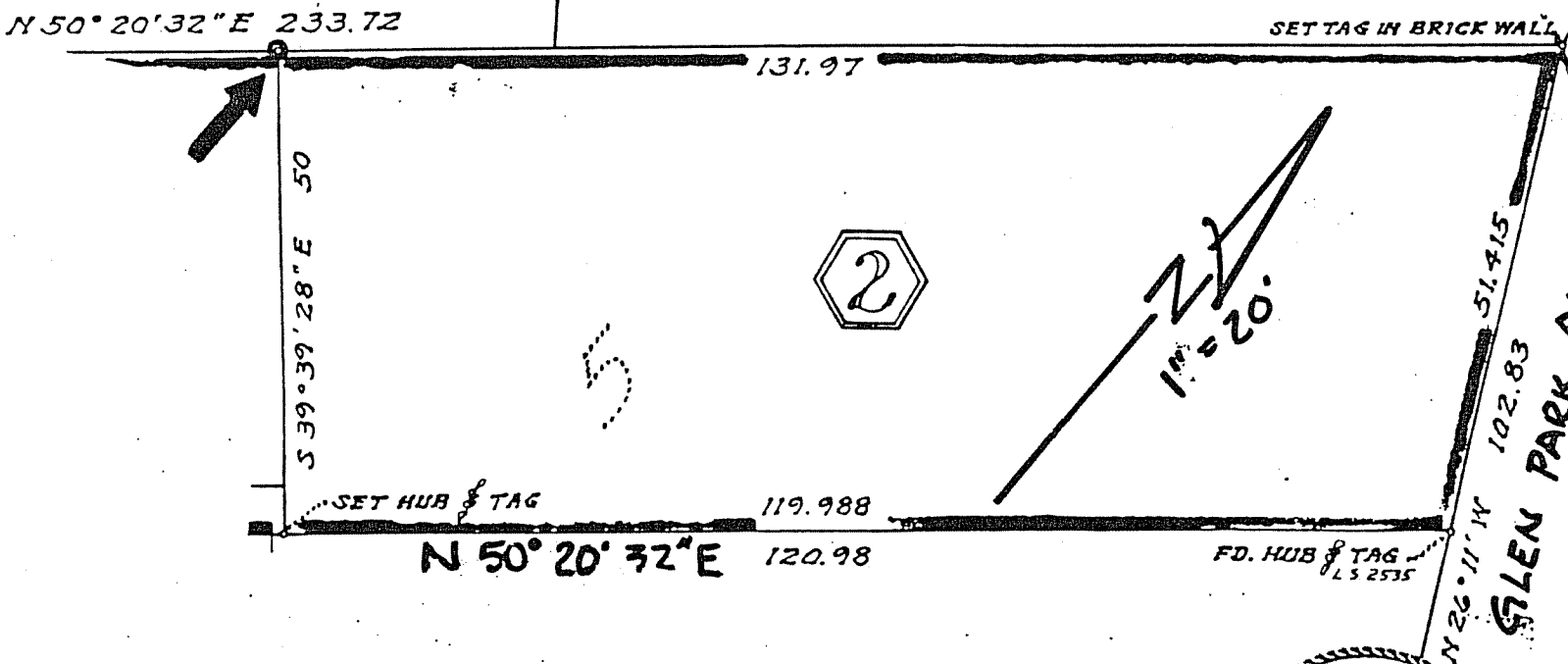
A.P. 15-021-37

PHYSICAL DESCRIPTION OF MONUMENTS REBUILT OR PERPETUATED

As shown

CALIFORNIA COORDINATE SYSTEM ORDER: FIRST  SECOND  THIRD   
STATIONS USED: NGS (USC & GS)  STATE  COUNTY  OTHER  STATION \_\_\_\_\_ STATION \_\_\_\_\_  
ZONE \_\_\_\_\_ ELEVATION \_\_\_\_\_ NORTHINGS (Y) \_\_\_\_\_ EASTINGS (X) \_\_\_\_\_

SKETCH: (Include reference tie or witness points, remarks and topo of area)



**SURVEYOR'S CERTIFICATE**  
THIS CORNER RECORD WAS PREPARED BY ME OR UNDER MY DIRECTION IN CONFORMANCE WITH THE LAND SURVEYORS ACT ON July 1980  
BY: JON P. BREYFOGLE No. 4788  
SIGNED: [Signature]  
L.S. or R.C.E. No. \_\_\_\_\_  
SEAL

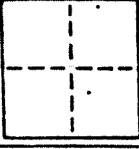
COUNTY SURVEYOR'S OFFICE  
THE CORNER RECORD WAS RECEIVED AND EXAMINED AND FILED BY: [Signature] C 30212 Exp. 3-31-92  
TITLE: \_\_\_\_\_  
DOCUMENT No. \_\_\_\_\_  
STATEMENT ON BACK OF SHEET YES  NO

# CORNER RECORD

COUNTY OF Marin T. \_\_\_\_\_ R. \_\_\_\_\_ MERIDIAN \_\_\_\_\_ CALIFORNIA

CORNER TYPE: GOVT. CORNER  MEANDER  RANCHO  CONTROL  OTHER

CORNER IDENTIFICATION — DATE OF VISIT \_\_\_\_\_ 19\_\_\_\_



CORNER — LEFT AS FOUND  FOUND AND TAGGED  REESTABLISHED OBLITERATED CORNER  REBUILT

PHYSICAL DESCRIPTION OF CORNER FOUND; EVIDENCE AND METHOD USED TO IDENTIFY OR REESTABLISH

Set a brass tag "LS 4788" atop a corner 4"X4" fence post at the southeasterly corner of Lot 2 of "Record of Survey Division of the Lands of Donald Weber et ux" filed in Book 8 of Surveys at Page 7, Marin County Records, by and per said map.

A.P. 15-021-37

PHYSICAL DESCRIPTION OF MONUMENTS REBUILT OR PERPETUATED

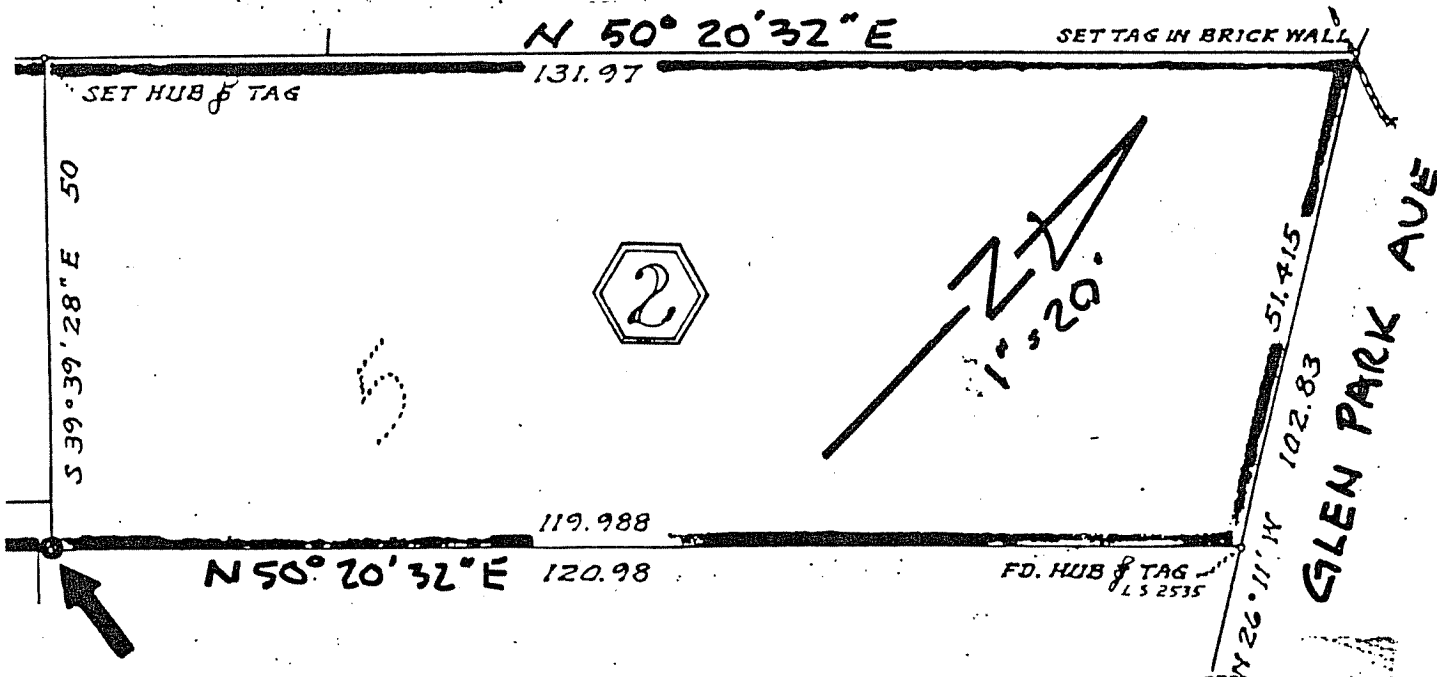
As shown

CALIFORNIA COORDINATE SYSTEM ORDER: FIRST  SECOND  THIRD

STATIONS USED: NGS (USC & GS)  STATE  COUNTY  OTHER  STATION \_\_\_\_\_ STATION \_\_\_\_\_

ZONE \_\_\_\_\_ ELEVATION \_\_\_\_\_ NORTHINGS (Y) \_\_\_\_\_ EASTINGS (X) \_\_\_\_\_

SKETCH: (Include reference tie or witness points, remarks and topo of area)



**SURVEYOR'S CERTIFICATE**

THIS CORNER RECORD WAS PREPARED BY ME OR UNDER MY DIRECTION IN CONFORMANCE WITH THE LAND SURVEYORS ACT ON July 7 No. 4788

SIGNED: [Signature]

L.S. or R.C.E. No. \_\_\_\_\_

STATE OF CALIFORNIA

**COUNTY SURVEYOR'S CERTIFICATE**

THE CORNER RECORD WAS RECEIVED, EXAMINED AND FILED AND EXAMINED AND FILED [Signature] C 30212197

BY: [Signature] Exp 3-31-92

TITLE: [Signature]

DOCUMENT No. \_\_\_\_\_

STATEMENT ON BACK OF SHEET YES  NO

STATE OF CALIFORNIA