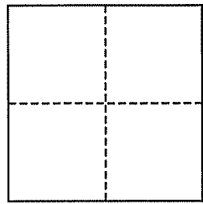


CORNER RECORD

City of San Rafael

Document Number APN^o 015-012-14
County of Marin, California

Brief Legal Description Lot 4, Map of Hacienda Subdivision 7 RM 85, Marin County Records



CORNER TYPE

Government Corner Control
Meander Property
Rancho Other
Date of Survey February 15, 2011

COORDINATES (Optional)

N. _____
E. _____
Zone _____ NAD27 NAD83
NAD83 Epoch _____
Elev. _____
Vert. Datum: NGVD29 NAVD88
Meas. Units: Metric Imperial

Corner- Left as found Found and tagged Established Reestablished Rebuilt

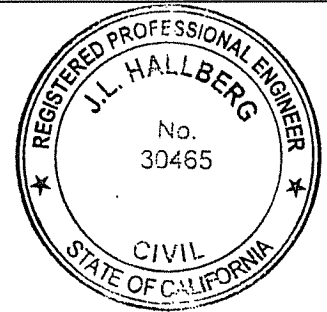
Identification and type of corner found: Evidence used to identify or procedure used to establish or reestablish the corner:
Found street Monuments per 7 RM 85 as shown upon reverse side

A description of the physical condition of the monument as found and as set or reset: Set front corners of parcel with Rebar & Cap "RCE 30465"; set Rebar & Cap "RCE 30465" along Northern and Southern sidelines of parcel as shown and noted; set Iron Pipe & Plug "RCE 30465" at rear corners of parcel; set Rebar & Cap "RCE 30465" at Angle Point on rear Western line of parcel

SURVEYOR'S STATEMENT

This corner Record was prepared by me or under my direction in conformance with the Land Surveyor's Act on February 16, 2011

Signed [Signature] P.L.S. or R.C.E. No. 30465



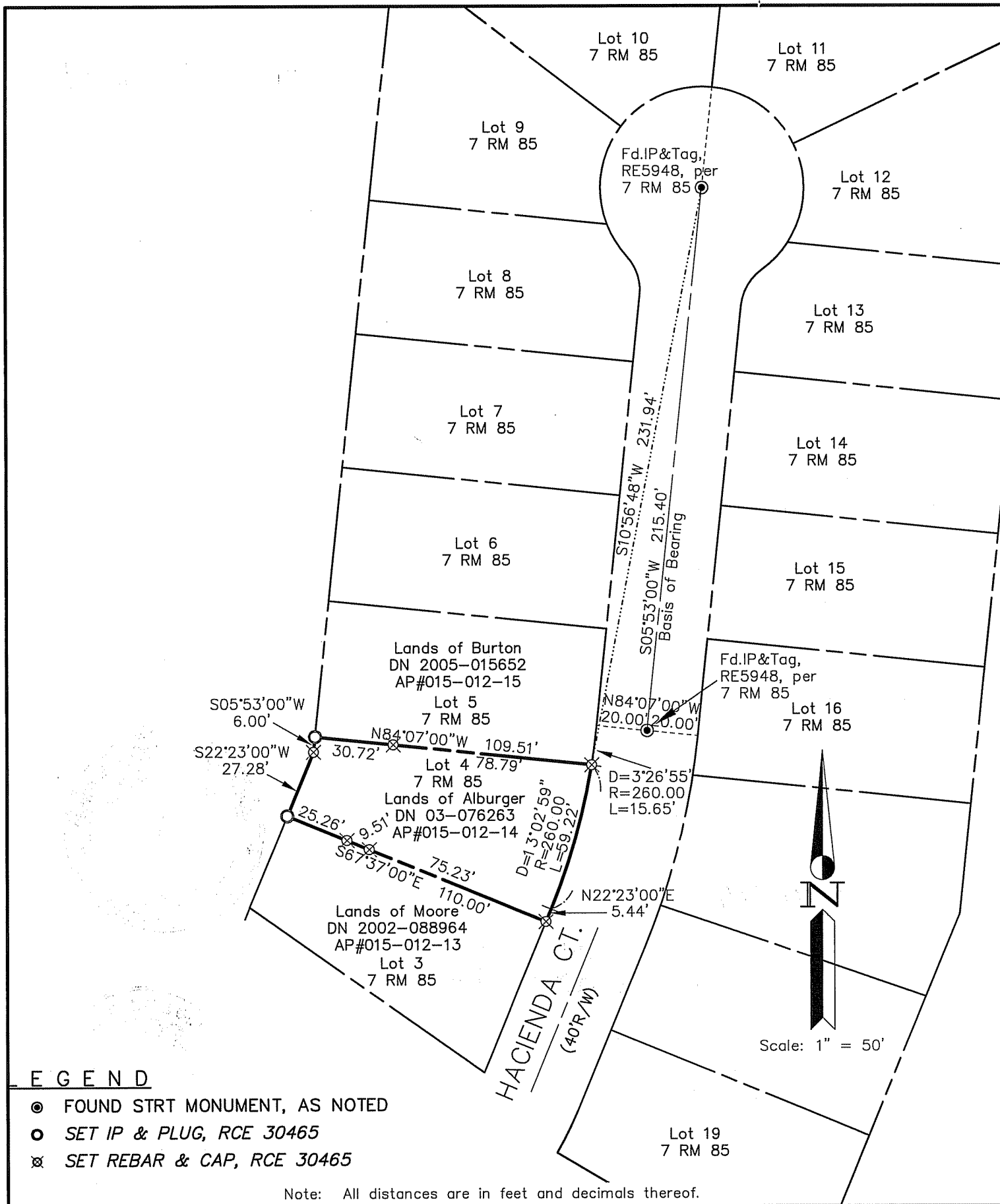
COUNTY SURVEYOR'S STATEMENT

This Corner Record was received FEBRUARY 18, 2011 and examined and filed MARCH 28, 2011

Signed [Signature] P.L.S. or R.C.E. No. 7128
Title COUNTY SURVEYOR



County Surveyor's Comment _____



E G E N D

- ⊙ FOUND STRT MONUMENT, AS NOTED
- SET IP & PLUG, RCE 30465
- ⊗ SET REBAR & CAP, RCE 30465

Note: All distances are in feet and decimals thereof.

SHEET	1	OF	1
SCALE:	1" = 50'	DESIGN:	XXX
DATE:	Feb 2011	DRAWN:	E.D.L.
FILE:	2011-016	CHECKED:	J.L.H.

J.L. ENGINEERING
 CIVIL ENGINEERS-LAND SURVEYORS
 1539 4th ST., SAN RAFAEL, CA. 94901 (415) 457-6647

Corner Record
 Lands of Alburger - 15 Hacienda Ct.
 APN 015-012-14, San Rafael, Marin County, CA