

CORNER RECORD

Assessor's Parcel No. 015-012-12 & 13

City of San Rafael County of Marin California

Brief Legal Description: Lots 2 and 3, 7 RM 85 Marin County Records

CORNER TYPE

COORDINATES
(Optional)

Lots in Existing Subdivision

None

Corners - Found iron pipes at the northwesterly and the northeasterly corners of Lot 3. Set remaining property corners for Lots 2 and 3 as shown on this Corner Record map.

Description of Monuments reset: Monuments set are 3/4 inch iron pipes and tags LS 4397 except as otherwise noted on the map.

SURVEYOR'S STATEMENT

This Corner Record was prepared by me or under my direction in conformance with the Land Surveyor's Act on September 5, 2013.



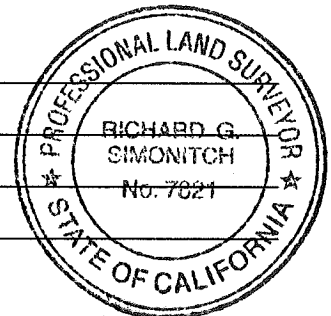
Signed Dale White LS 4397

COUNTY SURVEYOR'S STATEMENT

This Corner Record was received SEPTEMBER 17, 20 13, and examined and filed NOVEMBER 12, 20 13.






Signed Richard G. Simonitch Title DEPUTY CO. SURVEYOR

County Surveyor's Comments _____



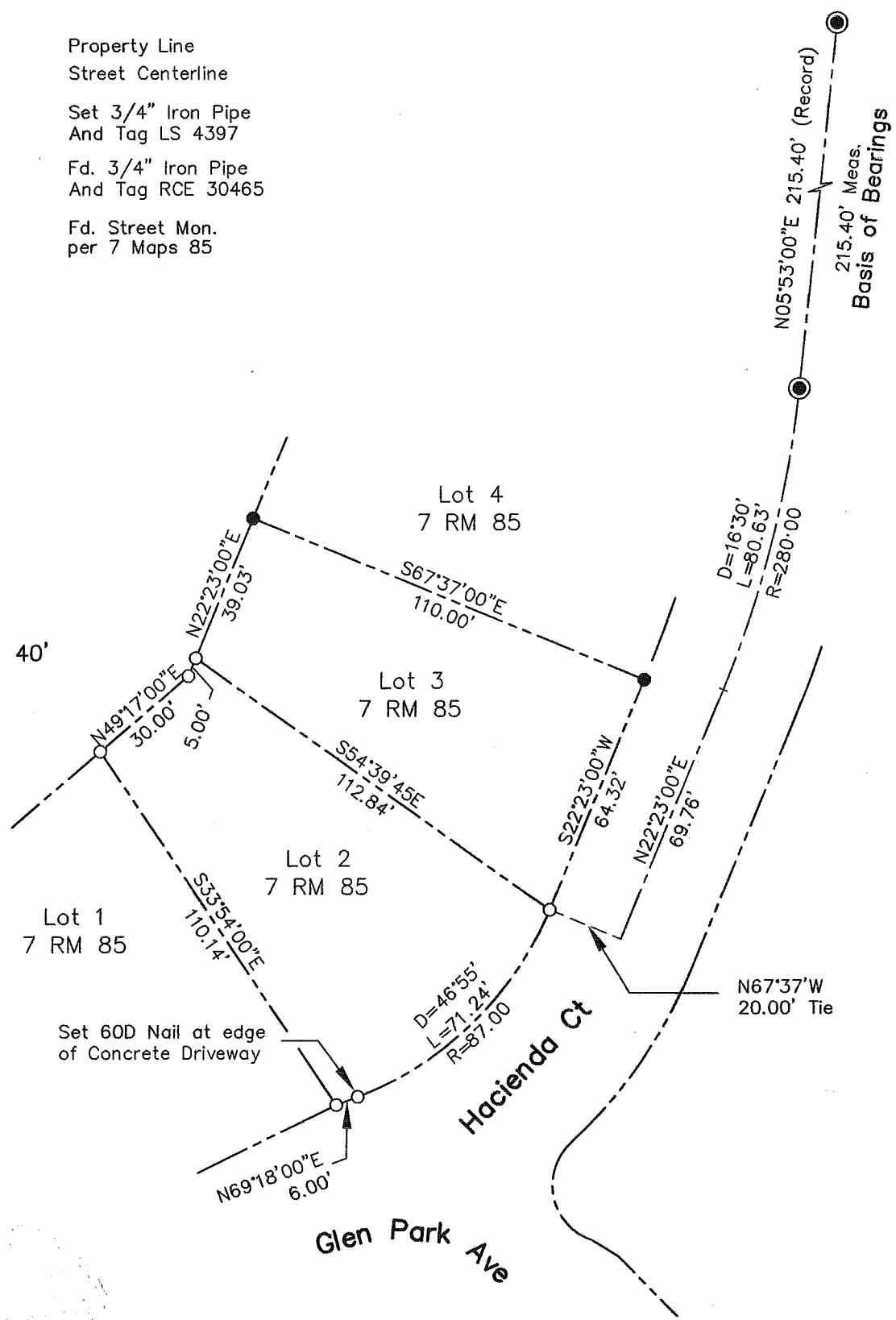
Corner Record

Legend

-  Property Line
-  Street Centerline
-  Set 3/4" Iron Pipe
And Tag LS 4397
-  Fd. 3/4" Iron Pipe
And Tag RCE 30465
-  Fd. Street Mon.
per 7 Maps 85



Scale: 1" = 40'



7 and 11 Hacienda Court
San Rafael, CA
APN 015-012-12 and
APN 015-012-13

Corner Record

Property Survey
Lots 2 and 3, 7 RM 85
Marin County Records