

CORNER RECORD

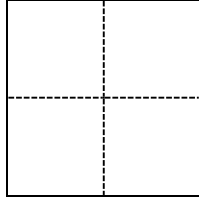
Agency Index CR 22-018

Document Number 014-204-09(ADJ)

City of San Rafael County of Marin, California

Brief Legal Description 100' N. of Medway Rd. on E. walk of Francisco Blvd. E, as shown on 2004 M 152

CORNER TYPE



- Government Corner
- Meander
- Rancho
- Control
- Property
- Other

Date of Survey January 4, 2022

COORDINATES (Optional)

N. _____ E. _____

Elevation _____

Units Metric U.S. Survey Foot

Horizontal Datum _____

Zone _____ Epoch Date _____

Vertical Datum _____

Complies with Public Resources Code §§8801-8819

Complies with Public Resources Code §§8890-8902

PLS Act Ref.: 8765(d) 8771 8773 Other:

Corner/Monument: Left as found Established Rebuilt Pre-Construction

Found and tagged Reestablished Referenced Post-Construction

Narrative of corner identified and monument as found, set, reset, replaced, or removed:

See sheet #2 for description(s):

SURVEYOR'S STATEMENT

This Corner Record was prepared by me or under my direction in conformance with the Professional Land Surveyors' Act on January 4, 2022.

Signed  P.L.S. or R.C.E. No. PLS 8940



COUNTY SURVEYOR'S STATEMENT

This Corner Record was received April 18, 2023

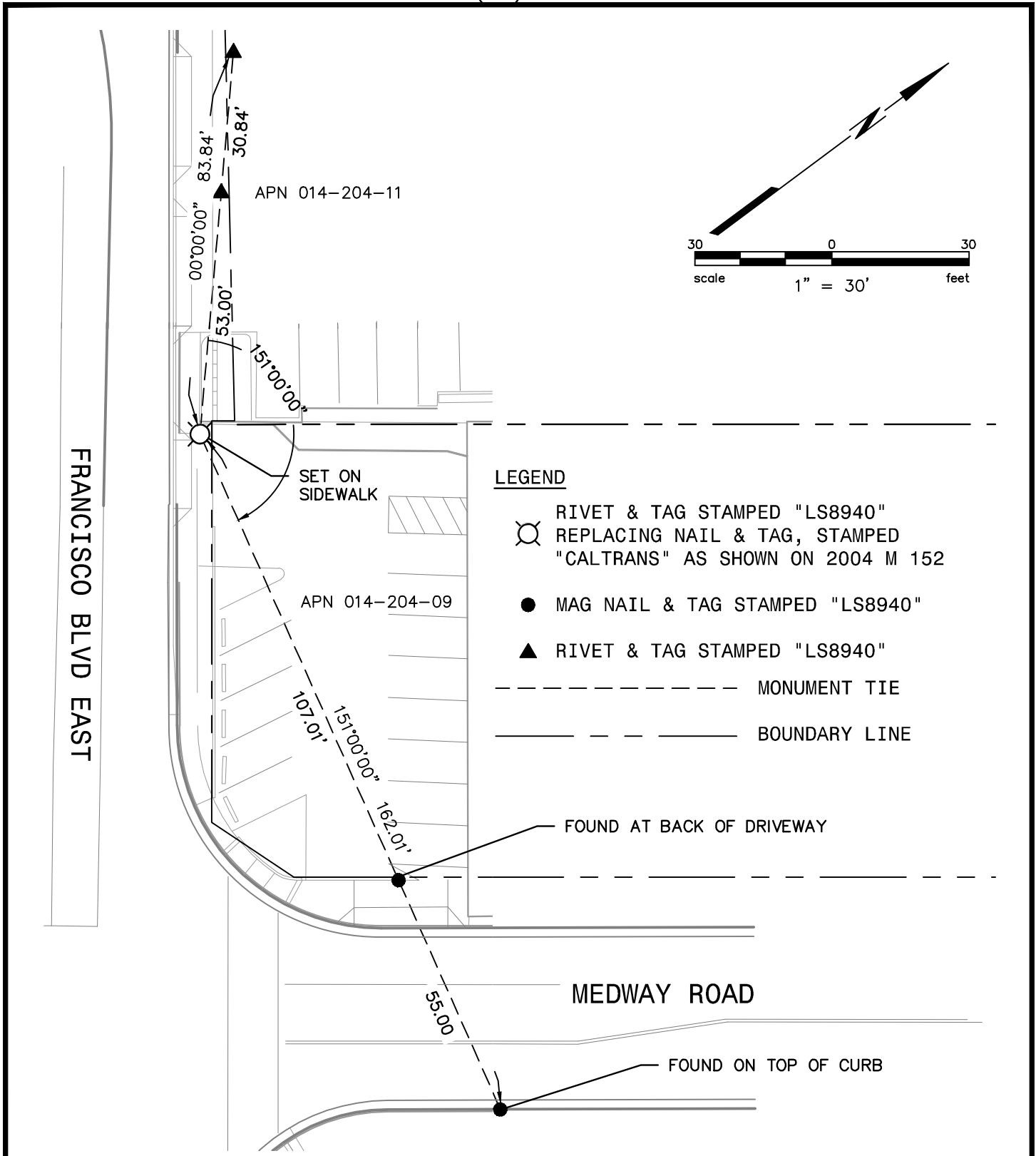
and examined and filed April 18, 2023.

Signed  P.L.S. ██████████ No. 8176

Title County Surveyor

County Surveyor's Comment





Plot Apr 06, 2023 at 9:22am



BKF

ENGINEERS / SURVEYORS / PLANNERS

4040 CIVIC CENTER DR, #530 SAN RAFAEL, CA 94903
 (415) 930-7960 FAX: (415) 930-7979

180622_CRs.dwg

COPYRIGHT © 2023 BKF ENGINEERS