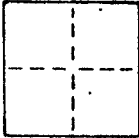


**CORNER RECORD**

COUNTY OF MARIN T. \_\_\_\_\_ R. \_\_\_\_\_ MERIDIAN \_\_\_\_\_ CALIFORNIA  
 CORNER TYPE: GOV'T. CORNER  MEANDER  RANCHO  CONTROL  OTHER   
 CORNER IDENTIFICATION — DATE OF VISIT \_\_\_\_\_ 19\_\_



CORNER — LEFT AS FOUND  FOUND AND TAGGED  REESTABLISHED OBLITERATED CORNER  REBUILT

**PHYSICAL DESCRIPTION OF CORNER FOUND; EVIDENCE AND METHOD USED TO IDENTIFY OR REESTABLISH**

Found 1 1/2" iron pipe per J.C. Oglesby survey number 14413, July 1955, with nail and tag imprint; set brass nail in nail hole. 0<sup>05</sup> below concrete sidewalk. Repaired with 0<sup>4</sup> asphalt under concrete.

AP No. 14-203-05, 12

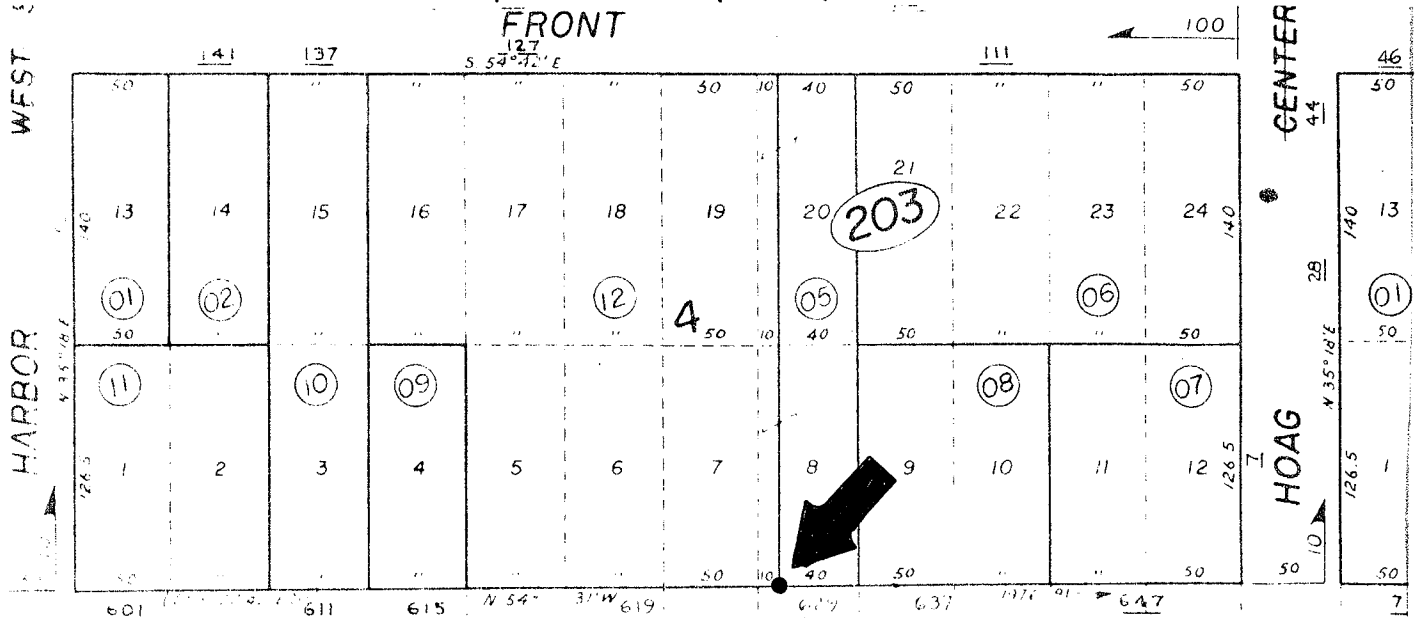
Wayne Cross Ford *2 RM 109* Survey No. 1409

**PHYSICAL DESCRIPTION OF MONUMENTS REBUILT OR PERPETUATED**

Set brass nail and tag "LS 3775" at surface in new concrete patch.

CALIFORNIA COORDINATE SYSTEM ORDER: FIRST  SECOND  THIRD   
 STATIONS USED: NGS (USC & GS)  STATE  COUNTY  OTHER  STATION \_\_\_\_\_ STATION \_\_\_\_\_  
 ZONE \_\_\_\_\_ ELEVATION \_\_\_\_\_ NORTHINGS (Y) \_\_\_\_\_ EASTINGS (X) \_\_\_\_\_

**SKETCH: (Include reference tie or witness points, remarks and topo of area)**



FRANCISCO

**SURVEYOR'S CERTIFICATE**  
 THIS CORNER RECORD WAS PREPARED BY ME OR UNDER MY DIRECTION IN CONFORMANCE WITH THE LAND SURVEYORS ACT ON August 1, 1985  
 SIGNATURE: *[Signature]*  
 L.S. or P.E. No. 3775  
 STATE OF CALIFORNIA  
 SEAL

**REGISTERED PROFESSIONAL ENGINEER**  
 COUNTY SURVEYOR'S CERTIFICATE  
 THIS CORNER RECORD WAS RECEIVED AND NOMINATED BY FILED Sept. 4, 1985  
 BY: *[Signature]*  
 TITLE: Deputy County Surveyor  
 DOCUMENT NO. \_\_\_\_\_  
 STATE OF CALIFORNIA  
 SYSTEM OF PUBLIC RECORDS  
 SHEET \_\_\_\_\_  
 YES  NO