

# CORNER RECORD

Agency Index CR 22-015

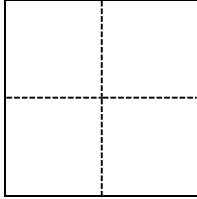
Document Number 014-152-38(ADJ)

City of San Rafael County of Marin, California

Brief Legal Description North of Yacht Club Dr. on Francisco Blvd. East, as shown on 2006 M 65

### CORNER TYPE

### COORDINATES (Optional)



- Government Corner
- Meander
- Rancho
- Control
- Property
- Other

Date of Survey January 4, 2022

N. \_\_\_\_\_ E. \_\_\_\_\_

Elevation \_\_\_\_\_

Units  Metric  U.S. Survey Foot

Horizontal Datum \_\_\_\_\_

Zone \_\_\_\_\_ Epoch Date \_\_\_\_\_

Vertical Datum \_\_\_\_\_

Complies with Public Resources Code §§8801-8819

Complies with Public Resources Code §§8890-8902

PLS Act Ref.:  8765(d)  8771  8773  Other:

Corner/Monument:  Left as found  Established  Rebuilt  Pre-Construction

Found and tagged  Reestablished  Referenced  Post-Construction

Narrative of corner identified and monument as found, set, reset, replaced, or removed:

See sheet #2 for description(s):

### SURVEYOR'S STATEMENT

This Corner Record was prepared by me or under my direction in conformance with the Professional Land Surveyors' Act on January 4, 2022.

Signed [Signature] P.L.S. or R.C.E. No. PLS 8940



### COUNTY SURVEYOR'S STATEMENT

This Corner Record was received April 18, 2023

and examined and filed April 18, 2023.

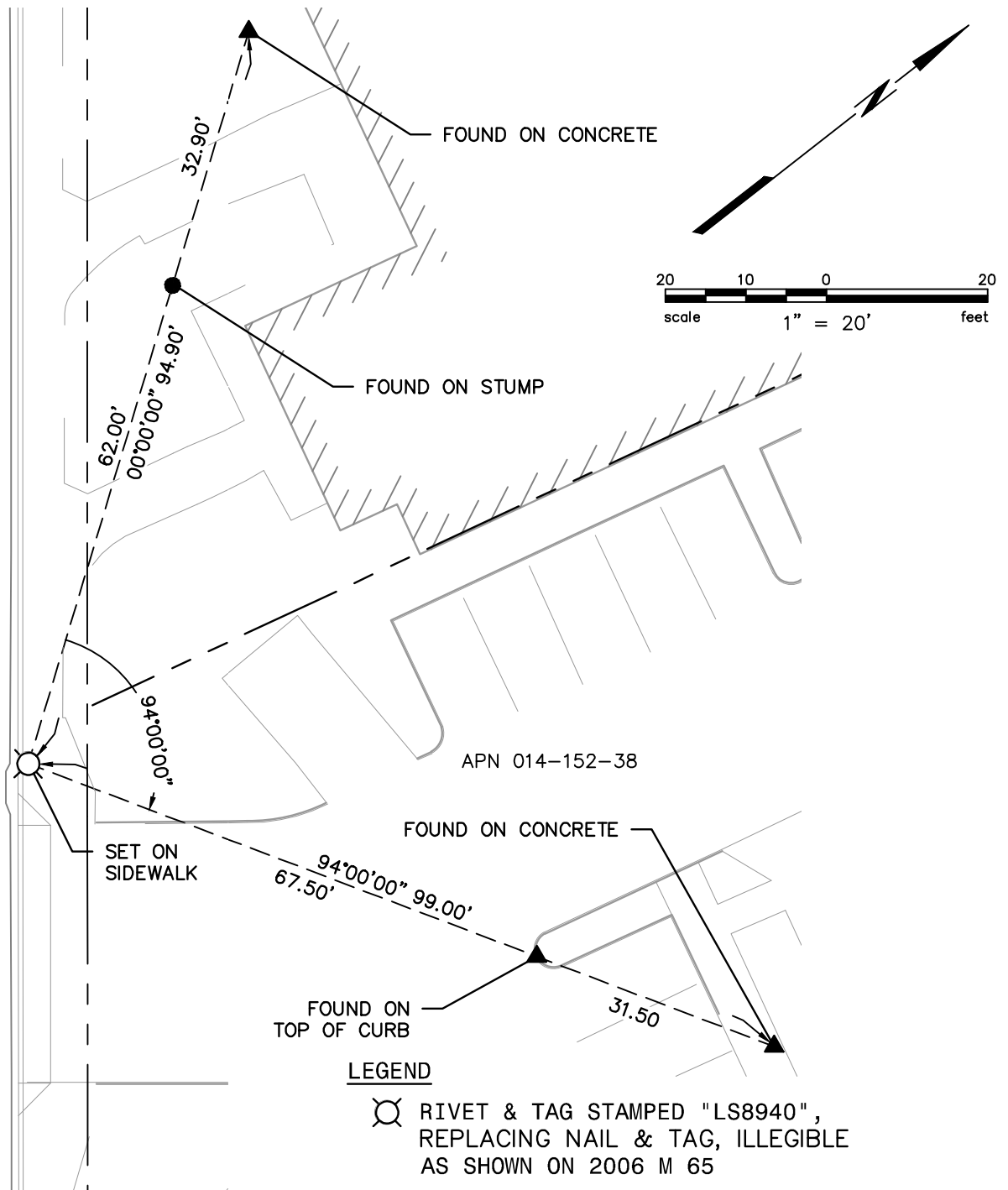
Signed T.W. Park P.L.S. [Redacted] No. 8176

Title County Surveyor

County Surveyor's Comment



FRANCISCO BLVD EAST



APN 014-152-38

**LEGEND**

- ⊙ RIVET & TAG STAMPED "LS8940", REPLACING NAIL & TAG, ILLEGIBLE AS SHOWN ON 2006 M 65
- MAG NAIL & TAG STAMPED "LS8940"
- ▲ RIVET & TAG STAMPED "LS8940"
- MONUMENT TIE
- BOUNDARY LINE

Plot Apr 06, 2023 at 9:12am



**BKF**

ENGINEERS / SURVEYORS / PLANNERS  
 4040 CIVIC CENTER DR, #530 SAN RAFAEL, CA 94903  
 (415) 930-7960 FAX: (415) 930-7979

180622\_CRs.dwg

COPYRIGHT © 2023 BKF ENGINEERS