

CORNER RECORD

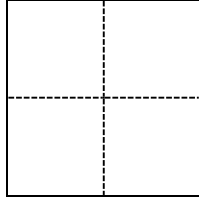
Agency Index CR 22-017

Document Number 014-152-34

City of San Rafael County of Marin, California

Brief Legal Description North of Yacht Club Dr. on Francisco Boulevard East, as shown on 23 PM 2

CORNER TYPE



- Government Corner
- Meander
- Rancho
- Control
- Property
- Other

Date of Survey January 4, 2022

COORDINATES (Optional)

N. _____ E. _____

Elevation _____

Units Metric U.S. Survey Foot

Horizontal Datum _____

Zone _____ Epoch Date _____

Vertical Datum _____

Complies with Public Resources Code §§8801-8819

Complies with Public Resources Code §§8890-8902

PLS Act Ref.: 8765(d) 8771 8773 Other:

Corner/Monument: Left as found Established Rebuilt Pre-Construction

Found and tagged Reestablished Referenced Post-Construction

Narrative of corner identified and monument as found, set, reset, replaced, or removed:

See sheet #2 for description(s):

SURVEYOR'S STATEMENT

This Corner Record was prepared by me or under my direction in conformance with the Professional Land Surveyors' Act on January 4, 2022.

Signed  P.L.S. or R.C.E. No. PLS 8940



COUNTY SURVEYOR'S STATEMENT

This Corner Record was received April 18, 2023

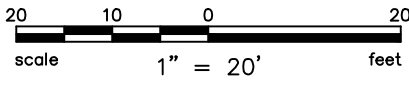
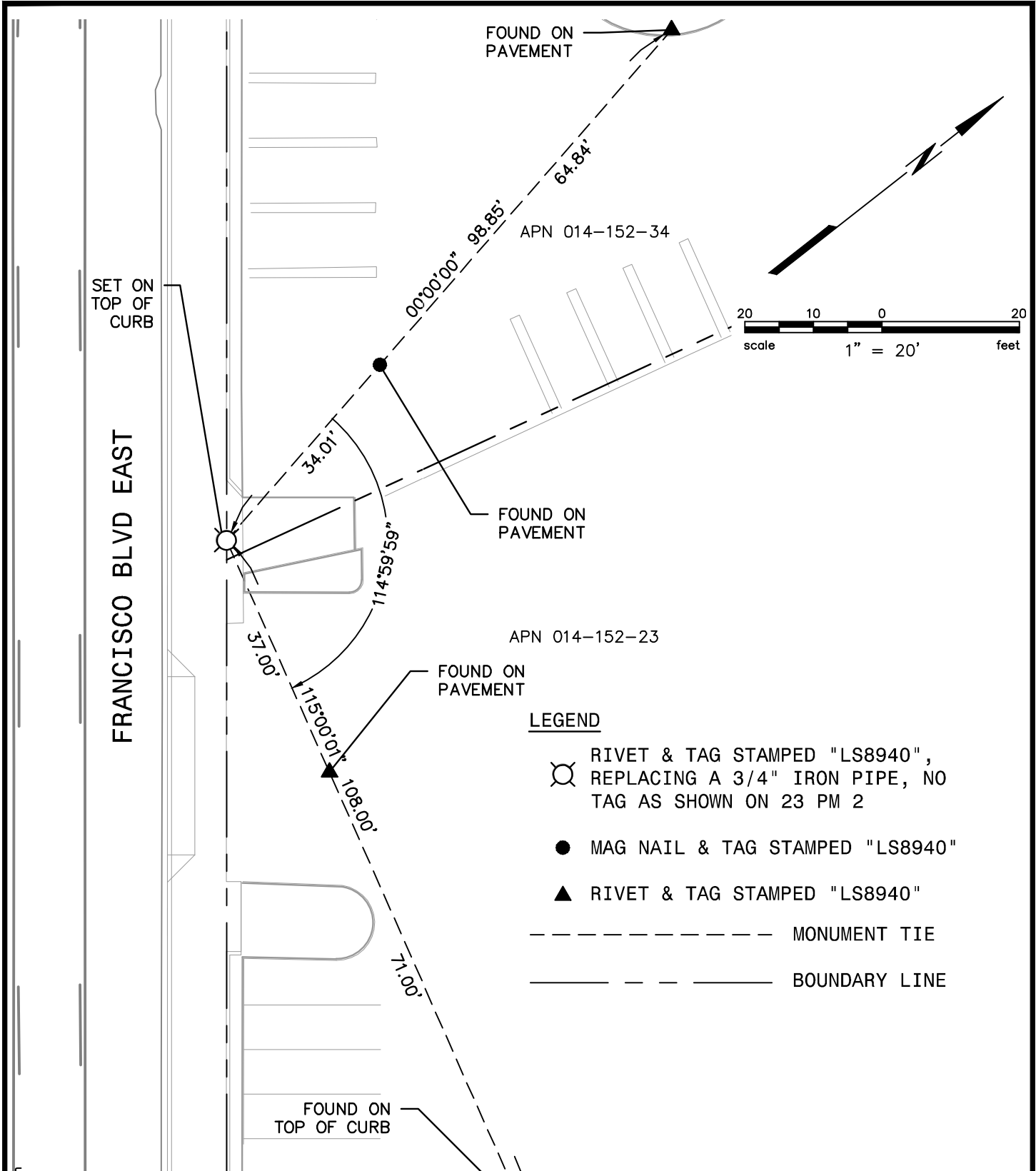
and examined and filed April 18, 2023.

Signed  P.L.S. [REDACTED] No. 8176




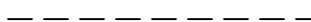

Title County Surveyor

County Surveyor's Comment





LEGEND

-  RIVET & TAG STAMPED "LS8940", REPLACING A 3/4" IRON PIPE, NO TAG AS SHOWN ON 23 PM 2
-  MAG NAIL & TAG STAMPED "LS8940"
-  RIVET & TAG STAMPED "LS8940"
-  MONUMENT TIE
-  BOUNDARY LINE

SET ON TOP OF CURB

FRANCISCO BLVD EAST

FOUND ON PAVEMENT

FOUND ON PAVEMENT

FOUND ON PAVEMENT

FOUND ON TOP OF CURB

Plot Mar 11, 2022 at 12:52pm



BKF

ENGINEERS / SURVEYORS / PLANNERS
 4040 CIVIC CENTER DR, #530 SAN RAFAEL, CA 94903
 (415) 930-7960 FAX: (415) 930-7979

180622_CRs.dwg

COPYRIGHT © 2022 BKF ENGINEERS