

CORNER RECORD

Agency Index CR22-020

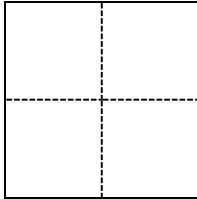
Document Number 014-152-31

City of San Rafael County of Marin, California

Brief Legal Description North of Yacht Club Dr. on Francisco Blvd. East, as shown on 2006 M 65

CORNER TYPE

COORDINATES (Optional)



- Government Corner
- Meander
- Rancho
- Control
- Property
- Other

Date of Survey January 4, 2022

N. _____ E. _____

Elevation _____

Units Metric U.S. Survey Foot

Horizontal Datum _____

Zone _____ Epoch Date _____

Vertical Datum _____

Complies with Public Resources Code §§8801-8819

Complies with Public Resources Code §§8890-8902

PLS Act Ref.: 8765(d) 8771 8773 Other:

Corner/Monument: Left as found Established Rebuilt Pre-Construction

Found and tagged Reestablished Referenced Post-Construction

Narrative of corner identified and monument as found, set, reset, replaced, or removed:

See sheet #2 for description(s):

SURVEYOR'S STATEMENT

This Corner Record was prepared by me or under my direction in conformance with the Professional Land Surveyors' Act on January 4, 2022.

Signed [Signature] P.L.S. or R.C.E. No. PLS 8940



COUNTY SURVEYOR'S STATEMENT

This Corner Record was received April 18, 2023

and examined and filed April 18, 2023.

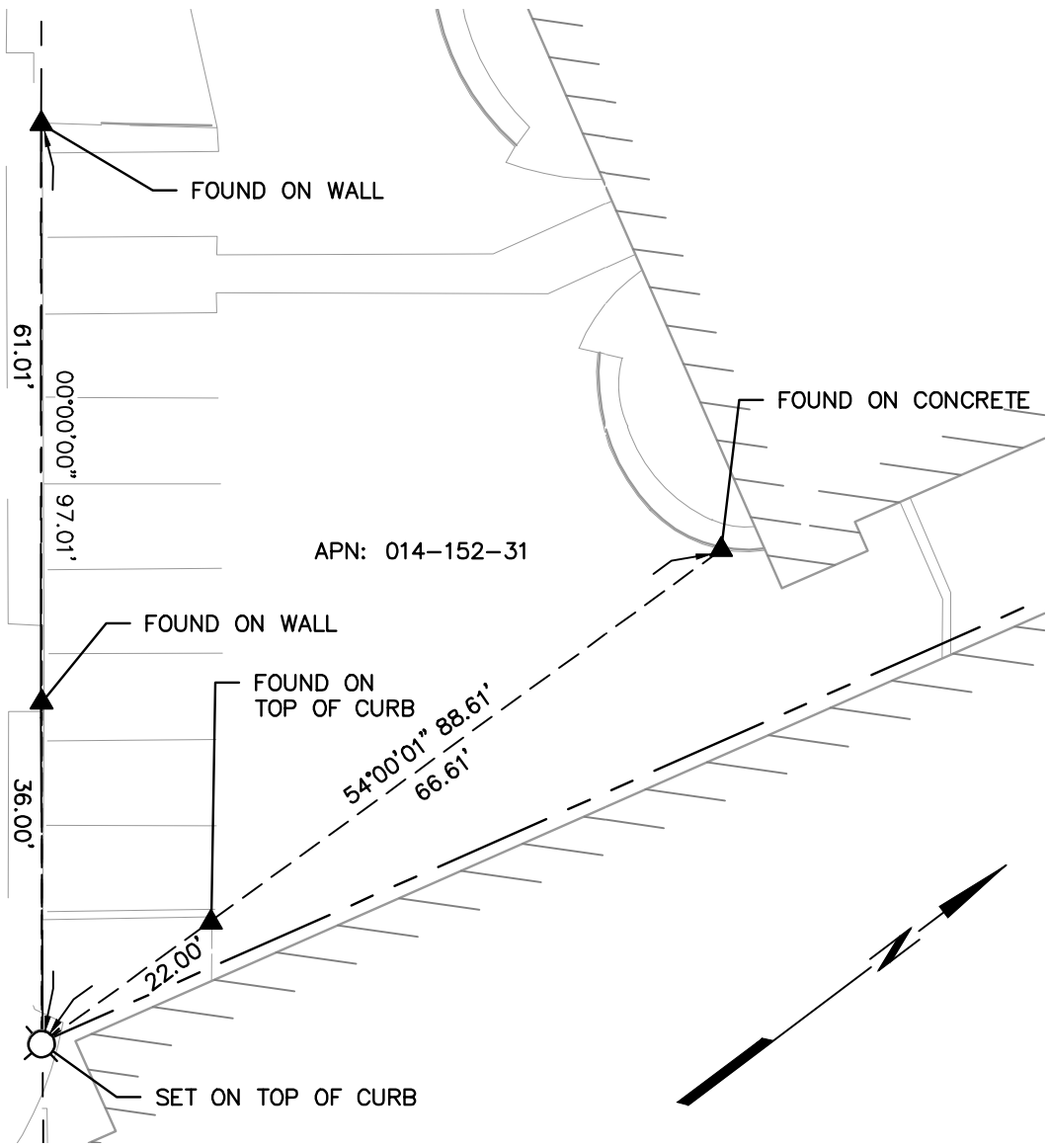
Signed T.W. Park P.L.S. [Redacted] No. 8176

Title County Surveyor

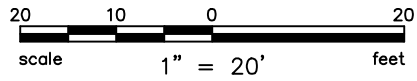
County Surveyor's Comment





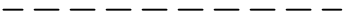

FRANCISCO BLVD EAST



APN: 014-152-31



LEGEND

-  RIVET & TAG STAMPED "LS8940", REPLACING A NAIL & TAG, STAMPED "M FORD, LS 7237" AS SHOWN ON 2006 M 65
-  RIVET & TAG STAMPED "LS8940"
-  MONUMENT TIE
-  BOUNDARY LINE

Plot Apr 06, 2023 at 9:01am



ENGINEERS / SURVEYORS / PLANNERS
 4040 CIVIC CENTER DR, #530 SAN RAFAEL, CA 94903
 (415) 930-7960 FAX: (415) 930-7979