

# CORNER RECORD

Agency Index CR 22-016

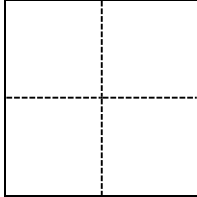
Document Number 014-152-28

City of San Rafael County of Marin, California

Brief Legal Description North of Harbor St. on Francisco Boulevard East as shown on 2004 M 152

### CORNER TYPE

### COORDINATES (Optional)



- Government Corner
- Meander
- Rancho
- Control
- Property
- Other

Date of Survey January 4, 2022

N. \_\_\_\_\_ E. \_\_\_\_\_

Elevation \_\_\_\_\_

Units  Metric  U.S. Survey Foot

Horizontal Datum \_\_\_\_\_

Zone \_\_\_\_\_ Epoch Date \_\_\_\_\_

Vertical Datum \_\_\_\_\_

Complies with Public Resources Code §§8801-8819

Complies with Public Resources Code §§8890-8902

PLS Act Ref.:  8765(d)  8771  8773  Other:

Corner/Monument:  Left as found  Established  Rebuilt  Pre-Construction

Found and tagged  Reestablished  Referenced  Post-Construction

Narrative of corner identified and monument as found, set, reset, replaced, or removed:

See sheet #2 for description(s):

### SURVEYOR'S STATEMENT

This Corner Record was prepared by me or under my direction in conformance with the Professional Land Surveyors' Act on January 4, 2022.

Signed 04/07/2023 P.L.S. or R.C.E. No. PLS 8940



### COUNTY SURVEYOR'S STATEMENT

This Corner Record was received April 18, 2023

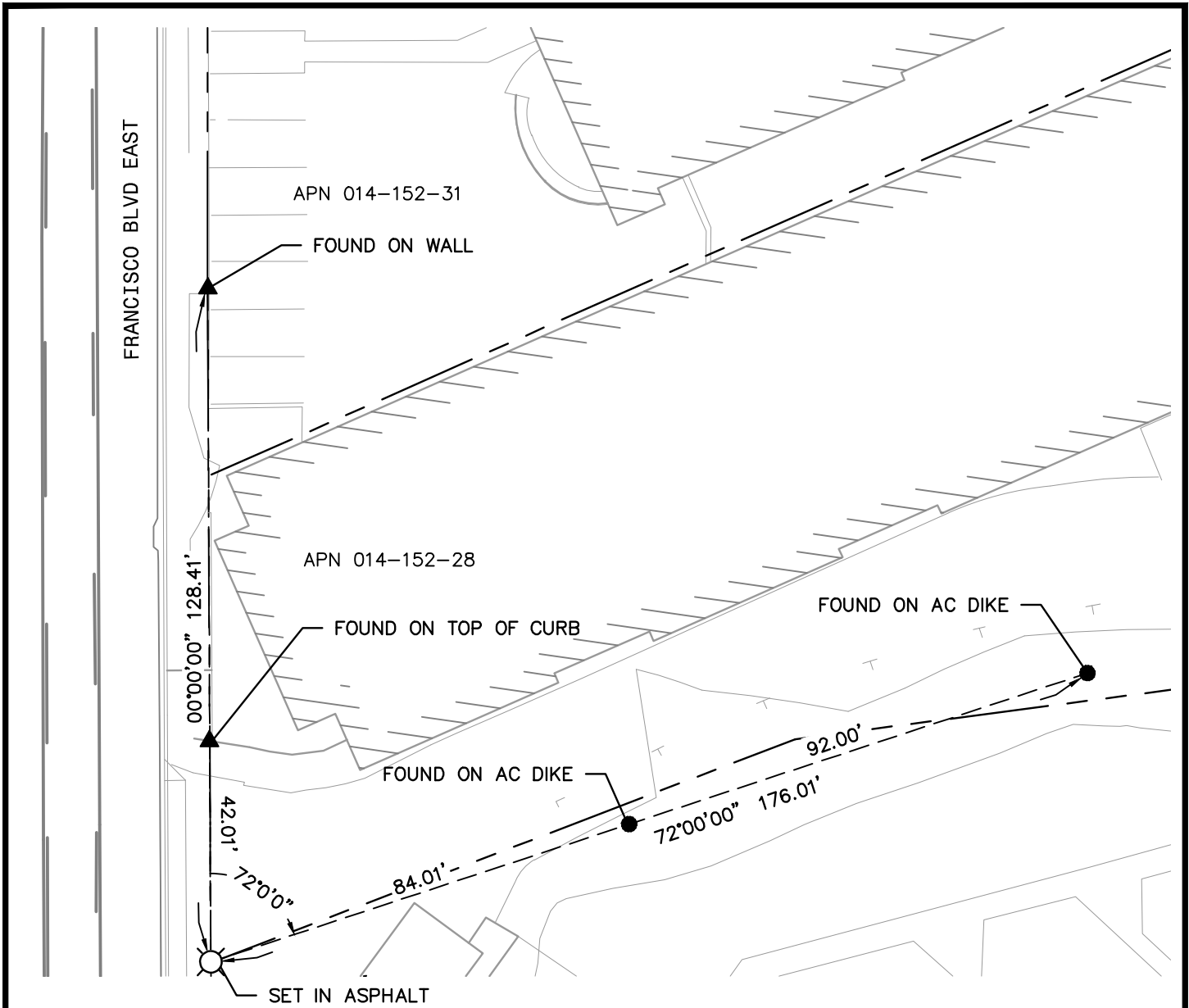
and examined and filed April 18, 2023.

Signed T.W. Park P.L.S. [REDACTED] No. 8176

Title County Surveyor

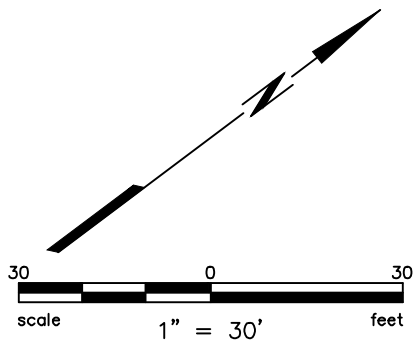
County Surveyor's Comment





**LEGEND**

- ⊗ MAG NAIL & TAG STAMPED "LS8940"
- ⊗ REPLACING NAIL & TAG, STAMPED "LS 4694" AS SHOWN ON 2004 M 152
- MAG NAIL & TAG STAMPED "LS8940"
- ▲ RIVET & TAG STAMPED "LS8940"
- MONUMENT TIE
- - - - - BOUNDARY LINE



Plot Mar 11, 2022 at 12:57pm



ENGINEERS / SURVEYORS / PLANNERS  
 4040 CIVIC CENTER DR, #530 SAN RAFAEL, CA 94903  
 (415) 930-7960 FAX: (415) 930-7979

180622\_CRs.dwg

COPYRIGHT © 2022 BKF ENGINEERS