

# CORNER RECORD

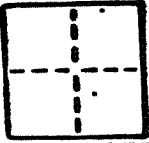
A.P. # 14-064-04

1 of 4

COUNTY OF MARIN STATE OF CALIFORNIA

CORNER TYPE: GOVT. CORNER  ALIEN  RANCHO  CONTROL  OTHER

CORNER IDENTIFICATION - DATE OF VISIT \_\_\_\_\_ 19\_\_\_\_



CORNER - LEFT AS FOUND  FOUND AND TAGGED  REESTABLISHED OBLITERATED CORNER  RESULT

PHYSICAL DESCRIPTION OF CORNER FOUND, EVIDENCE AND METHOD USED TO IDENTIFY OR REESTABLISH

A.P. No. 14-064-04

PHYSICAL DESCRIPTION OF MONUMENTS RESULT OR PERPETUATED

Set 3/4" i.p. w/ Tag R.C.E. 18221 for the Northwesternly Lot corner as shown on "Map No. 1, San Rafael Development Company", Book 2 of Record Maps at Page 116, Marin County Records.

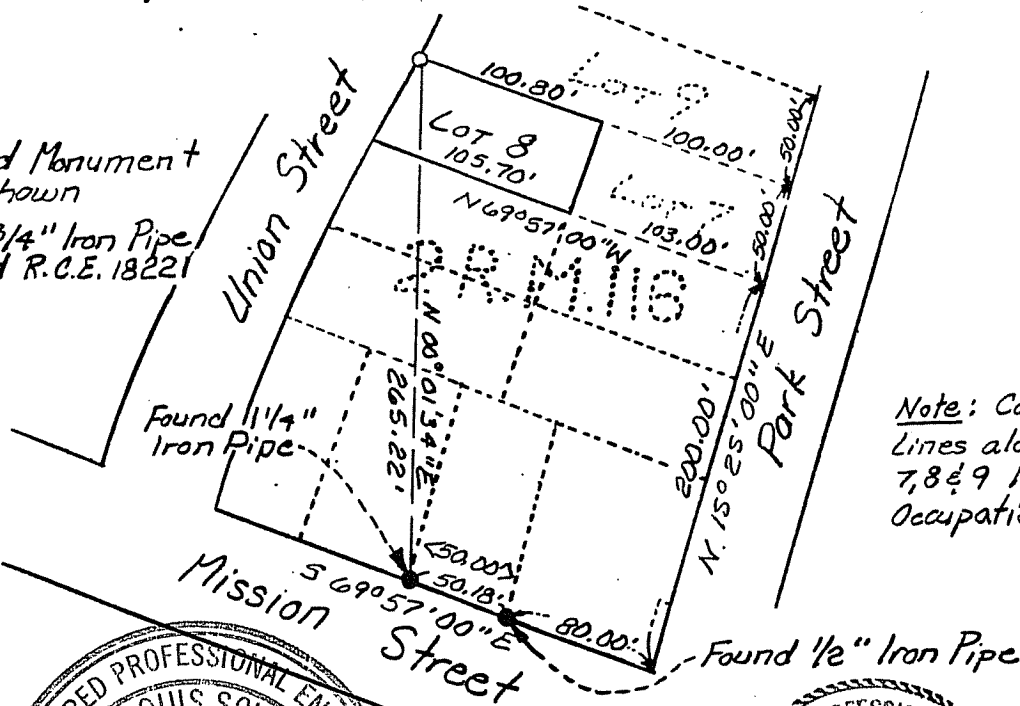
San Rafael

CALIFORNIA COORDINATE SYSTEM ORDER: FIRST  SECOND  THIRD   
 STATIONS USED: NGS (USC & GS)  STATE  COUNTY  OTHER  STATION \_\_\_\_\_ STATION \_\_\_\_\_  
 ZONE \_\_\_\_\_ ELEVATION \_\_\_\_\_ NORTHINGS (N) \_\_\_\_\_ EASTINGS (E) \_\_\_\_\_

SKETCH: (Include reference file or witness points, remarks and topo of area)

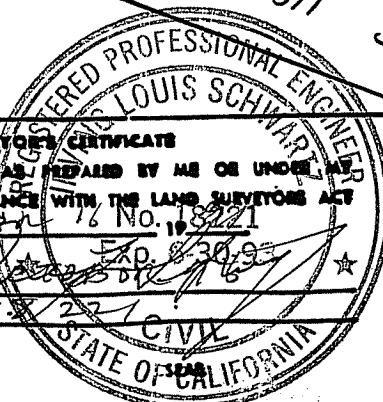
### Legend

- Found Monument as Shown
- Set 3/4" Iron Pipe Tagged R.C.E. 18221

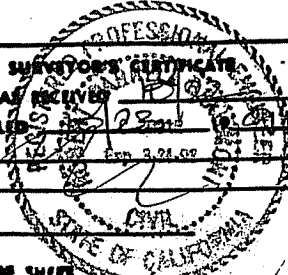


Note: Calculated Lines along Lots 7, 8 & 9 Match Occupation Well.

**SURVEYOR'S CERTIFICATE**  
 THIS CORNER RECORD WAS PREPARED BY ME OR UNDER MY DIRECTION IN CONFORMANCE WITH THE LAND SURVEYORS ACT ON OCTOBER 17 1991 No. 18221  
 SIGNED: [Signature] Exp. 8/30/93  
 L.S. or R.C.E. No. 11221



**COUNTY SURVEYOR'S CERTIFICATE**  
 THE CORNER RECORD WAS RECEIVED AND EXAMINED AND FILED \_\_\_\_\_ 1991  
 BY: [Signature] Exp. 3/24/92  
 TITLE: \_\_\_\_\_  
 DOCUMENT No. \_\_\_\_\_  
 STATEMENT ON BACK OF SHEET



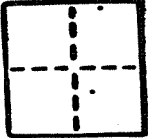
YES  NO

# CORNER RECORD

COUNTY OF \_\_\_\_\_ T. \_\_\_\_\_ E. \_\_\_\_\_ MERIDIAN CALIFORNIA

CORNER TYPE: GOVT. CORNER  MEASURED  RANGING  CONTROL  OTHER

CORNER IDENTIFICATION - DATE OF VISIT \_\_\_\_\_ 19\_\_



CORNER - LEFT AS FOUND  FOUND AND TAGGED  REESTABLISHED OBLITERATED CORNER  RESULT

PHYSICAL DESCRIPTION OF CORNER FOUND, EVIDENCE AND METHOD USED TO IDENTIFY OR REESTABLISH

*A.P. No 14-064-04*

PHYSICAL DESCRIPTION OF MONUMENTS RESULT OR PERPETUATED

*Set 3/4" I.P. w/ Tag. R.C.E 18221 for the Northeasterly Lot Corner as shown on "Map No. 1, San Rafael Development Company", Book 2 of Record Maps at Page 116, Marin County Records.*

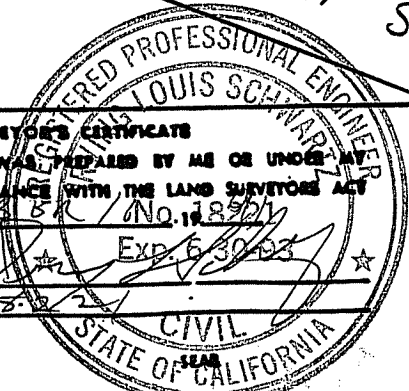
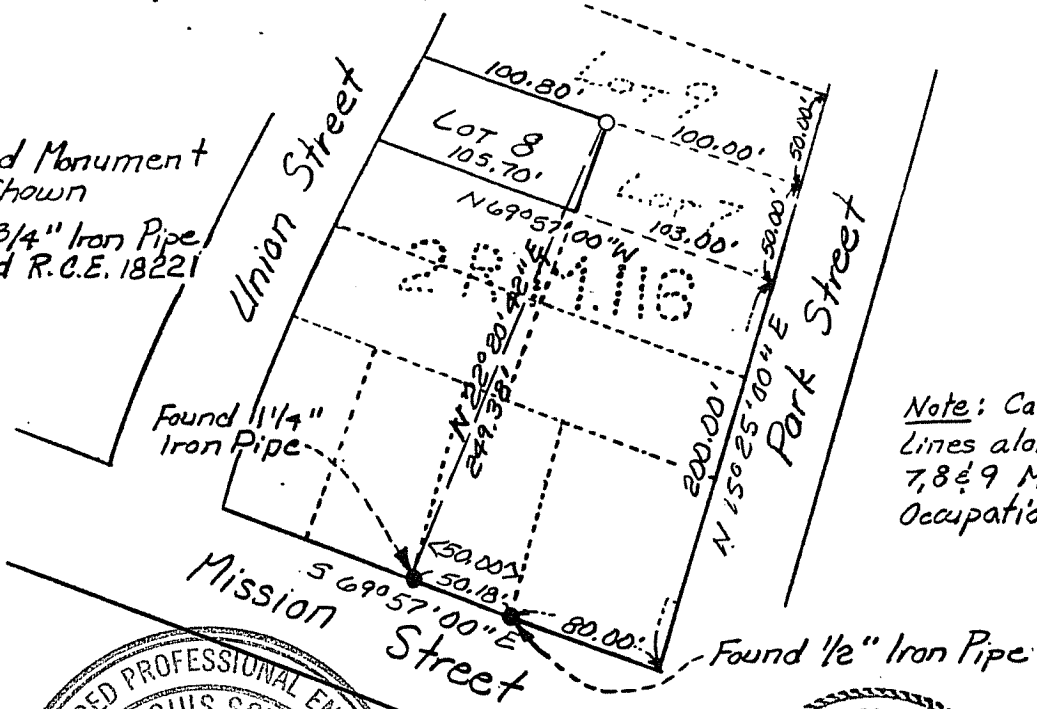
*San Rafael*

CALIFORNIA COORDINATE SYSTEM ORDER: FIRST  SECOND  THIRD   
STATIONS USED: NGS (USC & GSI)  STATE  COUNTY  OTHER  STATION \_\_\_\_\_ STATION \_\_\_\_\_  
ZONE \_\_\_\_\_ ELEVATION \_\_\_\_\_ NORTHINGS (N) \_\_\_\_\_ EASTINGS (E) \_\_\_\_\_

SKETCH: (Include reference tie or witness points, remarks and topo of area)

### Legend

- Found Monument as Shown
- Set 3/4" Iron Pipe Tagged R.C.E. 18221

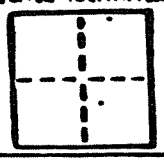


SURVEYOR'S CERTIFICATE  
THIS CORNER RECORD WAS PREPARED BY ME OR UNDER MY DIRECTION IN CONFORMANCE WITH THE LAND SURVEYORS ACT ON DETUABER 11 No. 18901  
SIGNED: [Signature]  
L.S. or R.C.E. No. 18901

COUNTY SURVEYOR'S CERTIFICATE  
THE CORNER RECORD WAS RECEIVED AND EXAMINED AND FILED 19 91  
BY: [Signature]  
TITLE: [Signature]  
DOCUMENT No. \_\_\_\_\_  
STATEMENT ON BACK OF SHEET YES  NO

# CORNER RECORD

COUNTY OF \_\_\_\_\_ P. \_\_\_\_\_ S. \_\_\_\_\_ MERIDIAN CALIFORNIA  
 CORNER TYPE: GOVT. CORNER  MEANOR  BANCING  CONTROL  OTHER   
 CORNER IDENTIFICATION - DATE OF VISIT \_\_\_\_\_ 19\_\_\_\_



CORNER - LEFT AS FOUND  FOUND AND TAGGED  REESTABLISHED OBLITERATED CORNER  RESULT

PHYSICAL DESCRIPTION OF CORNER FOUND, EVIDENCE AND METHOD USED TO IDENTIFY OR REESTABLISH

*A.P. No. 14-064-04*

PHYSICAL DESCRIPTION OF MONUMENTS RESULT OR PERPETUATED

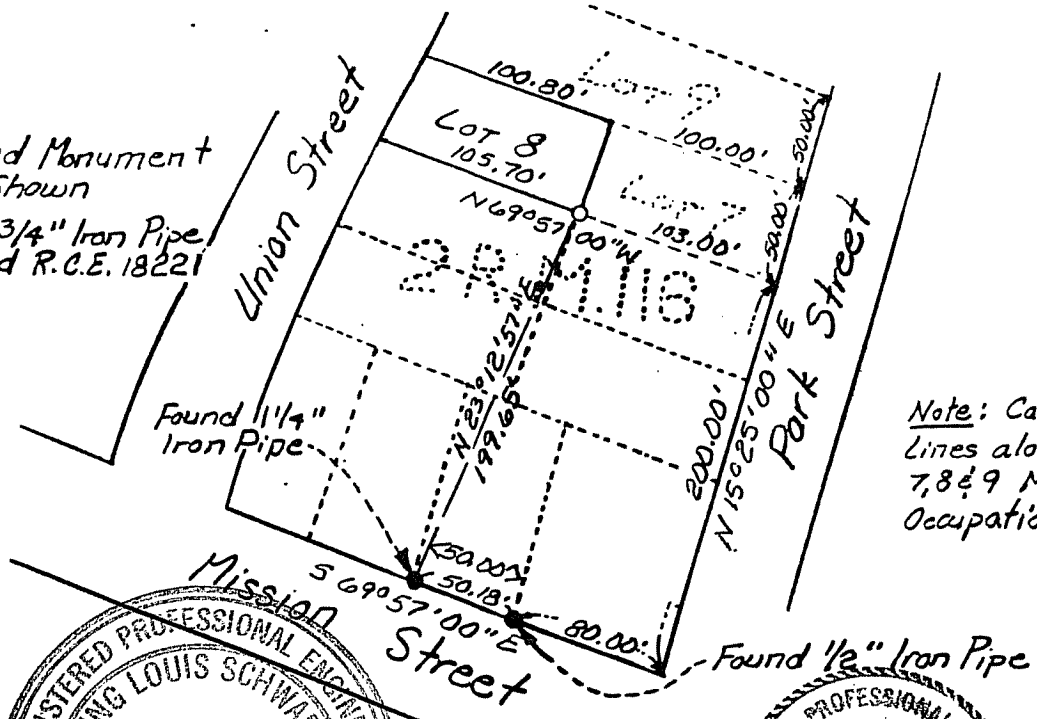
*Set 3/4" I.P. w/Tag R.C.E. 18221 for the Southeasterly Lot Corner as shown on "Map No. 1, San Rafael Development Company", Book 2 of Record Maps at Page 116, Marin County Records. San Rafael*

CALIFORNIA COORDINATE SYSTEM ORDER: FIRST  SECOND  THIRD   
 STATIONS USED: NGS (USC & OS)  STATE  COUNTY  OTHER  STATION \_\_\_\_\_ STATION \_\_\_\_\_  
 ZONE \_\_\_\_\_ ELEVATION \_\_\_\_\_ NORTHINGS (N) \_\_\_\_\_ EASTINGS (E) \_\_\_\_\_

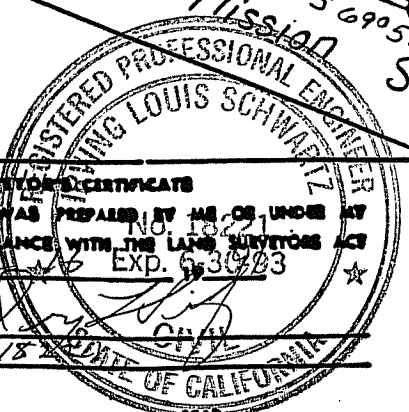
SKETCH: (Include reference file or witness points, remarks and topo of area)

Legend

- Found Monument as Shown
- Set 3/4" Iron Pipe Tagged R.C.E. 18221

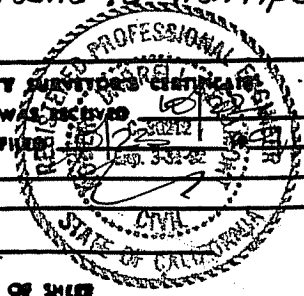


*Note: Calculated Lines along Lots 7, 8 & 9 Match Occupation Well.*



**SURVEYOR'S CERTIFICATE**  
 THIS CORNER RECORD WAS PREPARED BY ME OR UNDER MY DIRECTION IN CONFORMANCE WITH THE LAND SURVEYORS ACT ON OCTOBER 15 1991 EXP. 6-30-83  
 SIGNED: \_\_\_\_\_  
 L.E. or R.C.E. No. \_\_\_\_\_

**COUNTY SURVEYOR'S CERTIFICATE**  
 THE CORNER RECORD WAS RECEIVED AND EXAMINED AND FILED BY \_\_\_\_\_ 1991  
 TITLE: \_\_\_\_\_  
 DOCUMENT No. \_\_\_\_\_  
 STATEMENT ON BACK OF SHEET YES  NO

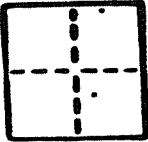


**CORNER RECORD**

COUNTY OF            MERIDIAN            CALIFORNIA

CORNER TYPE GOVT CORNER  MEANOR  RANCH  CONTROL  OTHER

CORNER IDENTIFICATION - DATE OF VISIT            19           



CORNER - LEFT AS FOUND  FOUND AND TAGGED  REESTABLISHED OBLITERATED CORNER  RESULT

PHYSICAL DESCRIPTION OF CORNER FOUND, EVIDENCE AND METHOD USED TO IDENTIFY OR REESTABLISH

A.P.No. 14-064-04

PHYSICAL DESCRIPTION OF MONUMENTS RESULT OR PERPETUATED

Set 3/4" I.P. w/ Tag R.C.E. 18221 for the Southwesterly Lot Corner as shown on "Map No. 1, San Rafael Development Company", Book 2 of Record Maps at Page 116, Marin County Records.

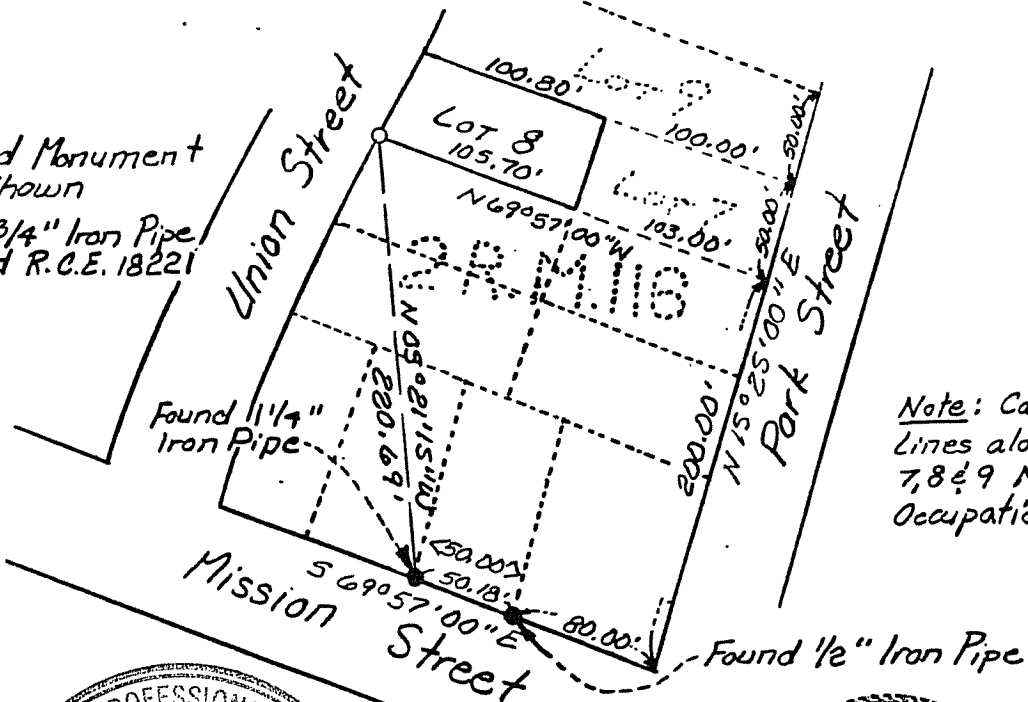
San Rafael

CALIFORNIA COORDINATE SYSTEM ORDER: FIRST  SECOND  THIRD   
 STATIONS USED: NGS (USC & GS)  STATE  COUNTY  OTHER  STATION            STATION             
 ZONE            ELEVATION            NORTHINGS (Y)            EASTINGS (X)           

SKETCH: (Include reference tie or witness points, remarks and topo of area)

Legend

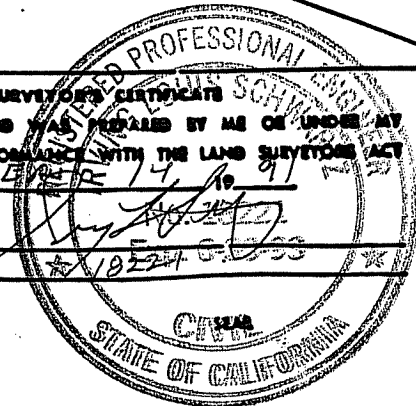
- Found Monument as Shown
- Set 3/4" Iron Pipe Tagged R.C.E. 18221



Note: Calculated Lines along Lots 7, 8 & 9 Match Occupation Well.

SURVEYOR'S CERTIFICATE  
 THIS CORNER RECORD WAS PREPARED BY ME OR UNDER MY DIRECTION IN CONFORMANCE WITH THE LAND SURVEYORS ACT ON OCTOBER 14 19 91

SIGNED: [Signature]  
 L.E. or R.C.E. No. 18221



COUNTY SURVEYOR'S CERTIFICATE  
 THE CORNER RECORD WAS RECEIVED, EXAMINED AND FILED BY [Signature] 19 91

BY [Signature] TITLE [Signature]

DOCUMENT No.            STATEMENT ON BACK OF SHEET  NO

