

CORNER RECORD

Agency Index

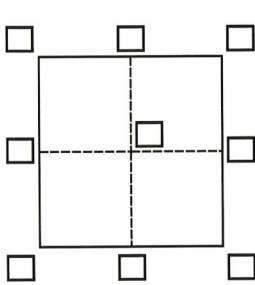
DPW# 19-019

Document Number

APN 014-063-27

City of San Rafael County of Marin, California

Brief Legal Description APN 014-063-27



CORNER TYPE

- Government Corner Control
 Meander Property
 Rancho Other

Date of Survey March 7, 2019

COORDINATES (Optional)

- N. _____ E. _____
 Elevation _____
 Units Metric U.S. Survey Foot
 Horizontal Datum _____
 Zone _____ Epoch Date _____
 Vertical Datum _____
 Complies with Public Resources Code §§8801-8819
 Complies with Public Resources Code §§8890-8902

- PLS Act Ref.: 8765(d) 8771 8773 Other:
 Corner/Monument: Left as found Established Rebuilt Pre-Construction
 Found and tagged Reestablished Referenced Post-Construction

Narrative of corner identified and monument as found, set, reset, replaced, or removed:

See sheet #2 for description(s):

Three monuments (two rebar & cap LS 7744 and one lead & brass tag 7744) from 2005 maps 138 were found in record position and used to reestablish and monument the northwesterly corner of the subject property with a railroad spike stamped LS 7237.

SURVEYOR'S STATEMENT

This Corner Record was prepared by me or under my direction in conformance with

the Professional Land Surveyors' Act on March 21, 2019.

Signed Michael E Ford P.L.S. or R.C.E. No. PLS 7237



COUNTY SURVEYOR'S STATEMENT

This Corner Record was received MARCH 28, 2019

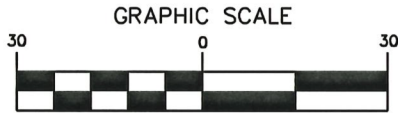
and examined and filed MAY, 14 2019.

Signed J. R. Semerad P.L.S. or R.C.E. No. 9292

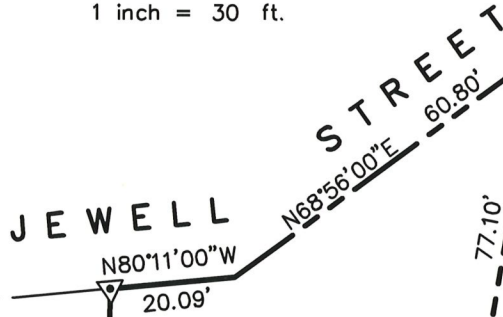
Title DEPUTY C.S.

County Surveyor's Comment





(IN FEET)
1 inch = 30 ft.



BASIS OF BEARINGS

NORTH 21°56'16\"/>

RECORD OF SURVEY
2005 MAPS 138

BASIS OF BEARINGS

LEGEND

- FOUND 5/8\"/>
- ⊕ FOUND LEAD & BRASS TAG STAMPED
LS 7744 PER 2005 MAPS 138
- ▽ SET RAILROAD SPIKE IN ASPHALT
PAVEMENT, STAMPED LS7237

NOTES:

ALL DISTANCES SHOWN ARE IN FEET AND DECIMALS THEREOF.

ALL COURSES SHOWN HEREON ARE RECORD AND MEASURED PER RECORD OF SURVEY FILED IN BOOK OF 2005 OF MAPS AT PAGE 138, MARIN COUNTY RECORDS.



2300 bethards drive, suite J

santa rosa • california 95405

p 707.542.8513 - f 707.542.1825

www.michaelfordinc.com