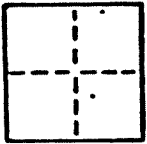


# CORNER RECORD AP #14-054-04

COUNTY OF Marin T. \_\_\_\_\_ R. \_\_\_\_\_ MERIDIAN \_\_\_\_\_ CALIFORNIA

CORNER TYPE: GOVT. CORNER  MEANDER  RANCHO  CONTROL  OTHER   
CORNER IDENTIFICATION — DATE OF VISIT April 19 89



CORNER — LEFT AS FOUND  POUND AND TAGGED  REESTABLISHED OBLITERATED CORNER  RESULT

PHYSICAL DESCRIPTION OF CORNER POUND, EVIDENCE AND METHOD USED TO IDENTIFY OR REESTABLISH

Found RE tags at AP #14-054-04 and 14-054-19. Location as shown on sketch.

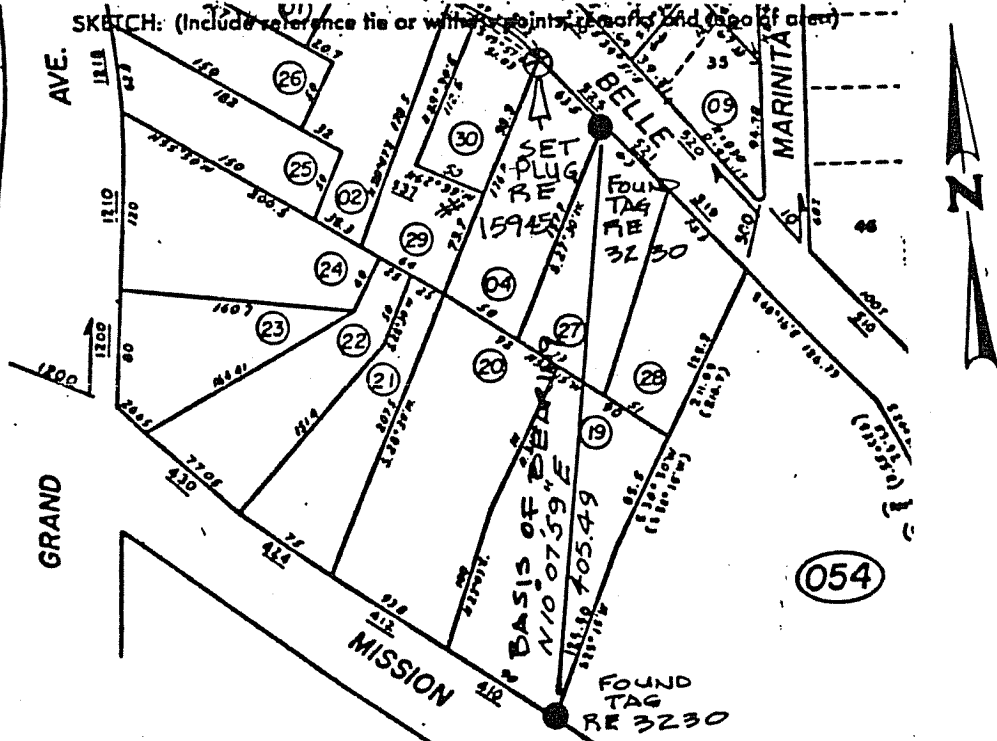
PHYSICAL DESCRIPTION OF MONUMENTS REBUILT OR PERPETUATED

## SET LEAD PLUG & TAG

RCE #15945

CALIFORNIA COORDINATE SYSTEM ORDER: FIRST  SECOND  THIRD   
STATIONS USED: NGS (USC & GS)  STATE  COUNTY  OTHER  STATION \_\_\_\_\_ STATION \_\_\_\_\_  
ZONE \_\_\_\_\_ ELEVATION \_\_\_\_\_ NORTHINGS (Y) \_\_\_\_\_ EASTINGS (X) \_\_\_\_\_

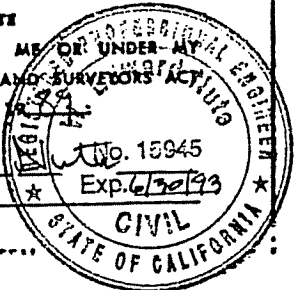
SKETCH: (Include reference tie or witness points, remarks and use of area)



### SURVEYOR'S CERTIFICATE

THIS CORNER RECORD WAS PREPARED BY ME OR UNDER MY DIRECTION IN CONFORMANCE WITH THE LAND SURVEYORS ACT ON April

SIGNED: [Signature]  
L.S. or R.C.E. No.: 15945



### COUNTY SURVEYOR'S CERTIFICATE

THE CORNER RECORD WAS RECEIVED 4/23/89 AND EXAMINED AND FILED 4/23/89 BY: [Signature] TITLE: [Signature]

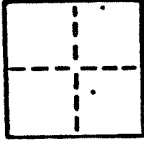
DOCUMENT No. \_\_\_\_\_  
ON BACK OF SHEET YES  NO

# CORNER RECORD AP #14-054-04

COUNTY OF Marin T. \_\_\_\_\_ R. \_\_\_\_\_ MERIDIAN \_\_\_\_\_ CALIFORNIA

CORNER TYPE: GOVT. CORNER  MEANDER  RANCHO  CONTROL  OTHER

CORNER IDENTIFICATION — DATE OF VISIT April 19 89



CORNER — LEFT AS FOUND  FOUND AND TAGGED  REESTABLISHED OBLITERATED CORNER  RESULT

### PHYSICAL DESCRIPTION OF CORNER FOUND, EVIDENCE AND METHOD USED TO IDENTIFY OR REESTABLISH

Found RE tags at AP #14-054-04 and 14-054-19. Location as shown on sketch.

### PHYSICAL DESCRIPTION OF MONUMENTS RESULT OR PERPETUATED

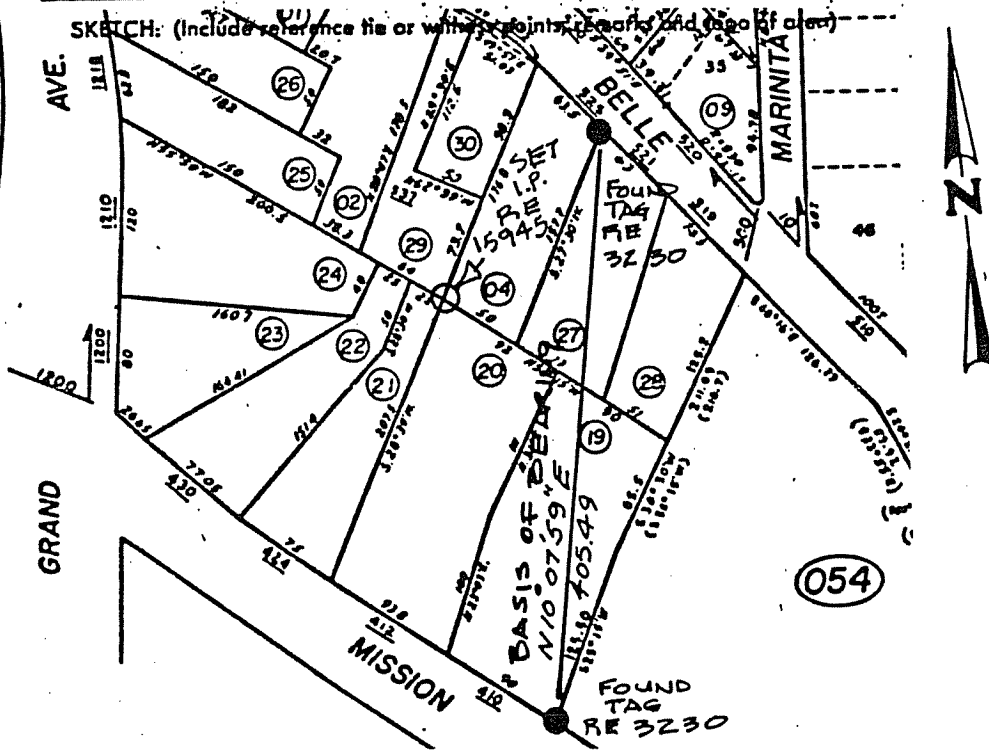
Set iron pipe and plug.  
RCE #15945

CALIFORNIA COORDINATE SYSTEM ORDER: FIRST  SECOND  THIRD

STATIONS USED: NGS (USC & GS)  STATE  COUNTY  OTHER  STATION \_\_\_\_\_ STATION \_\_\_\_\_

ZONE \_\_\_\_\_ ELEVATION \_\_\_\_\_ NORTHINGS (7) \_\_\_\_\_ EASTINGS (8) \_\_\_\_\_

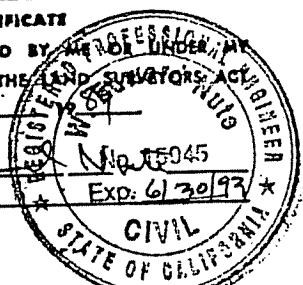
SKETCH: (Include reference file or within points, remarks and base of a lot)



**SURVEYOR'S CERTIFICATE**

THIS CORNER RECORD WAS PREPARED BY ME OR UNDER MY DIRECTION IN CONFORMANCE WITH THE LAND SURVEYORS ACT ON April

SIGNED: W. Ed  
L.S. or R.C.E. No. 15,945



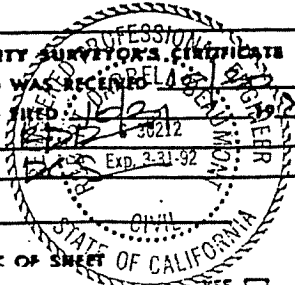
**COUNTY SURVEYOR'S CERTIFICATE**

THE CORNER RECORD WAS RECEIVED AND EXAMINED AND FILED BY: [Signature] 30212

TITLE: [Signature] Exp. 3-31-92

DOCUMENT No. \_\_\_\_\_

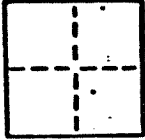
STATEMENT ON BACK OF SHEET YES  NO



# CORNER RECORD AP #14-054-04

COUNTY OF Marin T. \_\_\_\_\_ R. \_\_\_\_\_ MERIDIAN \_\_\_\_\_ CALIFORNIA

CORNER TYPE: GOVT. CORNER  MEANDER  RANCHO  CONTROL  OTHER   
CORNER IDENTIFICATION - DATE OF VISIT April 19 89



CORNER - LEFT AS FOUND  FOUND AND TAGGED  REESTABLISHED OBLITERATED CORNER  REBUILT

### PHYSICAL DESCRIPTION OF CORNER FOUND, EVIDENCE AND METHOD USED TO IDENTIFY OR REESTABLISH

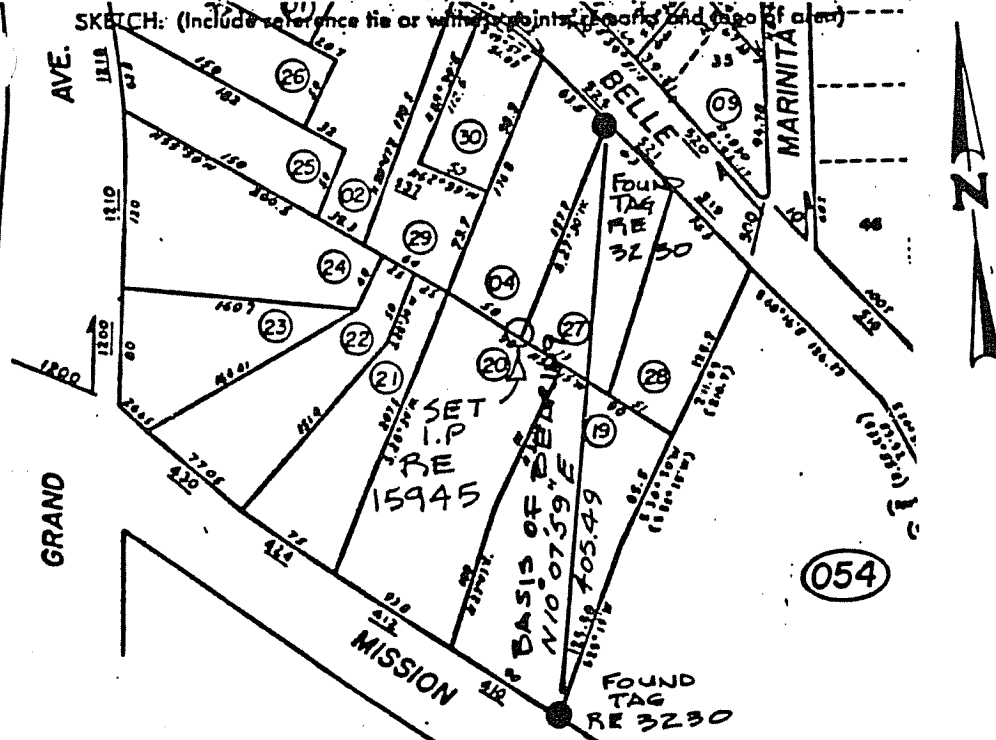
Found RE tags at AP #14-054-04 and 14-054-19. Location as shown on sketch.

### PHYSICAL DESCRIPTION OF MONUMENTS REBUILT OR PERPETUATED

Set iron pipe and plug.  
RCE #15945

CALIFORNIA COORDINATE SYSTEM ORDER: FIRST  SECOND  THIRD   
STATIONS USED: NGS (USC & GS)  STATE  COUNTY  OTHER  STATION \_\_\_\_\_ STATION \_\_\_\_\_  
ZONE \_\_\_\_\_ ELEVATION \_\_\_\_\_ NORTHINGS (N) \_\_\_\_\_ EASTINGS (E) \_\_\_\_\_

SKETCH: (Include reference ties or witness points, bearings and base of a corner)

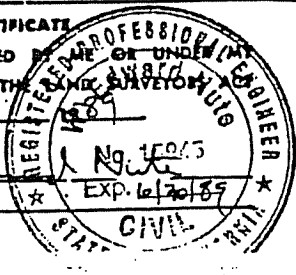


### SURVEYOR'S CERTIFICATE

THIS CORNER RECORD WAS PREPARED BY ME OR UNDER MY DIRECTION IN CONFORMANCE WITH THE LAND SURVEYOR ACT ON April

SIGNED: W. S. [Signature]

L.S. or R.C.E. No. 15945



### COUNTY SURVEYOR'S CERTIFICATE

THE CORNER RECORD WAS RECEIVED AND EXAMINED AND FILED APR 16 1989

BY: [Signature]  
TITLE: CORNER RECORD

DOCUMENT No. \_\_\_\_\_

STATEMENT ON BACK OF SHEET CIVIL \_\_\_\_\_

