

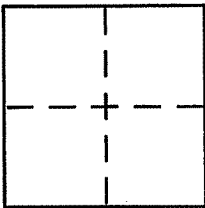
**CORNER RECORD**

Document Number APN 014-052-07

City of SAN RAFAEL

County of MARIN, California

Brief Legal Description LOT 49 OF 1/M/16 ALSO BEING 2601/M/187,02MC



**CORNER TYPE**

Government Corner  Control   
Meander  Property   
Rancho  Other   
Date of Survey 10-19-01

**COORDINATES (Optional)**

N. \_\_\_\_\_  
E. \_\_\_\_\_  
Zone \_\_\_\_\_ NAD27  NAD83   
NAD83 Epoch \_\_\_\_\_  
Elev. \_\_\_\_\_  
Vert. Datum: NGVD29  NAVD88   
Meas. Units: Metric  Imperial

Corner - Left as found  Found and tagged  Established  Reestablished  Rebuilt

Identification and type of corner found: Evidence used to identify or procedure used to establish or reestablish the corner:

SEE PAGE 2

A description of the physical condition of the monument as found and as set or reset:

SEE PAGE 2

**SURVEYOR'S STATEMENT**

This Corner Record was prepared by me or under my direction in conformance with the Land Surveyor's Act on OCTOBER 30 2001

Signed [Signature] P.L.S or R.C.E. No. 6784



**COUNTY SURVEYOR'S STATEMENT**

This Corner Record was received NOVEMBER 7, 2001

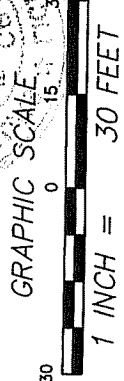
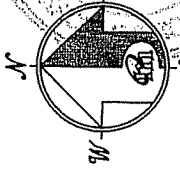
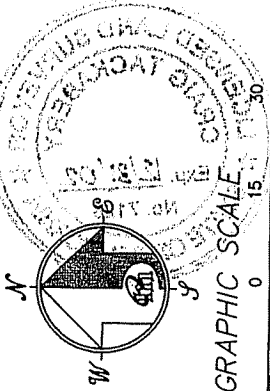
and examined and filed NOVEMBER 8, 2001

Signed [Signature] P.L.S or R.C.E. No. 7128

Title DEPUTY



County Surveyor's Comment \_\_\_\_\_



**REFERENCE**

RECORD OF SURVEY FILED FOR RECORD  
 8 OCTOBER 2001 IN BOOK 2001 OF  
 MAPS, AT PAGE 187, OFFICIAL RECORDS  
 OF MARIN COUNTY.

**LEGEND**

- FOUND IRON PIPE, OR AS NOTED
- SET 5/8" REBAR WITH CAP, PLS 6784

NOTE  
 RECORD=MEASURED

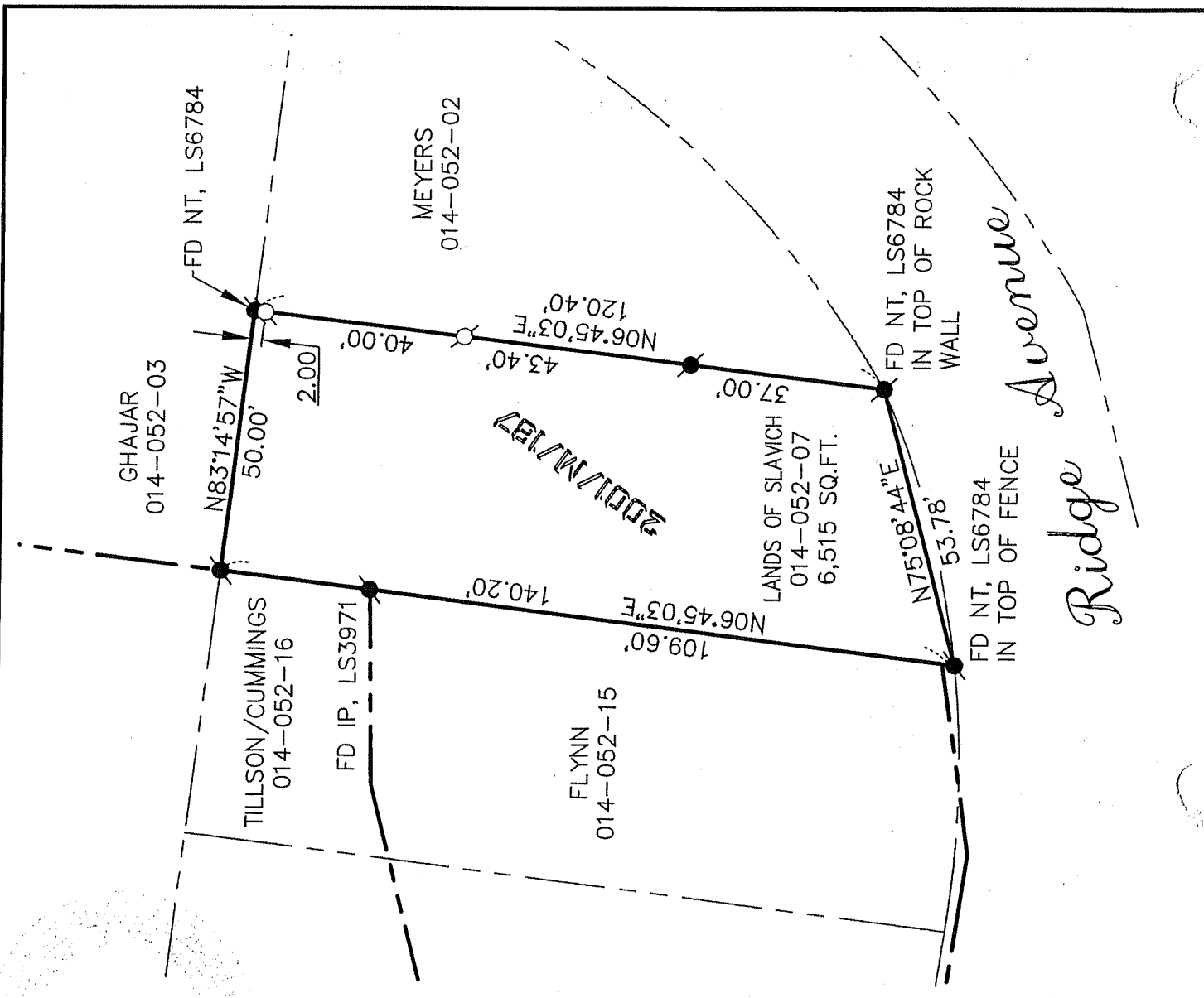
**CORNER RECORD**

**MERIDIAN SURVEYING ENGINEERING, INC.**

1812 UNION STREET  
 SAN FRANCISCO, CA 94123  
 (415) 440-4131

100 DRAKES LANDING RD, #164  
 GREENBRAE, CA 94123  
 (415) 461-1241

Info@meridiansurvey.com



*Ridge Avenue*