

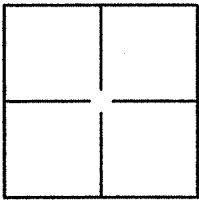
# CORNER RECORD

Document Number APN 14-023-06

City of SAN RAFAEL

County of MARIN, California

Brief Legal Description PORTION OF LOTS 59, 60, 61, 62, 63, 73, 74, AND 78, MAP OF MARINITA PARK TRACT, 1 RM 6, ASSESSOR'S PARCEL NO. 014-023-06



### CORNER TYPE

Government Corner  Control   
 Meander  Property   
 Rancho  Other

Date of Survey JULY 30, 2009

### COORDINATES (Optional)

N. \_\_\_\_\_  
 E. \_\_\_\_\_  
 Zone \_\_\_\_\_ NAD27  NAD83   
 NAD83 Epoch \_\_\_\_\_  
 Elev. \_\_\_\_\_  
 Vert. Datum: NGVD29  NAVD88   
 Meas. Units: Metric  Imperial

Corner - Left as found  Found and tagged  Established  Reestablished  Rebuilt

Identification and type of corner found: Evidence used to identify or procedure used to establish or reestablish the corner:  
FOUND 3/4" IRON PIPE MONUMENTS PER THE RECORD OF SURVEY FILED IN BOOK 12 OF SURVEYS AT PAGE 58 AND THE RECORD OF SURVEY FILED IN BOOK 2002 OF MAPS AT PAGE 57. LOCATION OF FOUND MONUMENTS SHOWN ON PAGE 2.

A description of the physical condition of the monument as found and as set or reset:  
SET AS NOTED MONUMENTS STAMPED "RCE 19893" AT THE LOCATIONS SHOWN ON PAGE 2.

### SURVEYOR'S STATEMENT

This Corner Record was prepared by me or under my direction in conformance with the Land Surveyor's Act on AUGUST 3, 2009.

Signed *Marvin L. Kinney* P.L.S. or (R.C.E.) No.: 19893



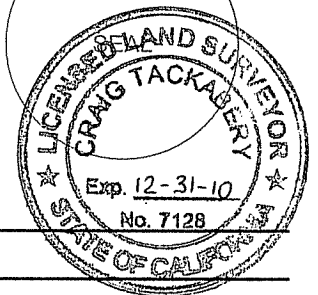
### COUNTY SURVEYOR'S STATEMENT

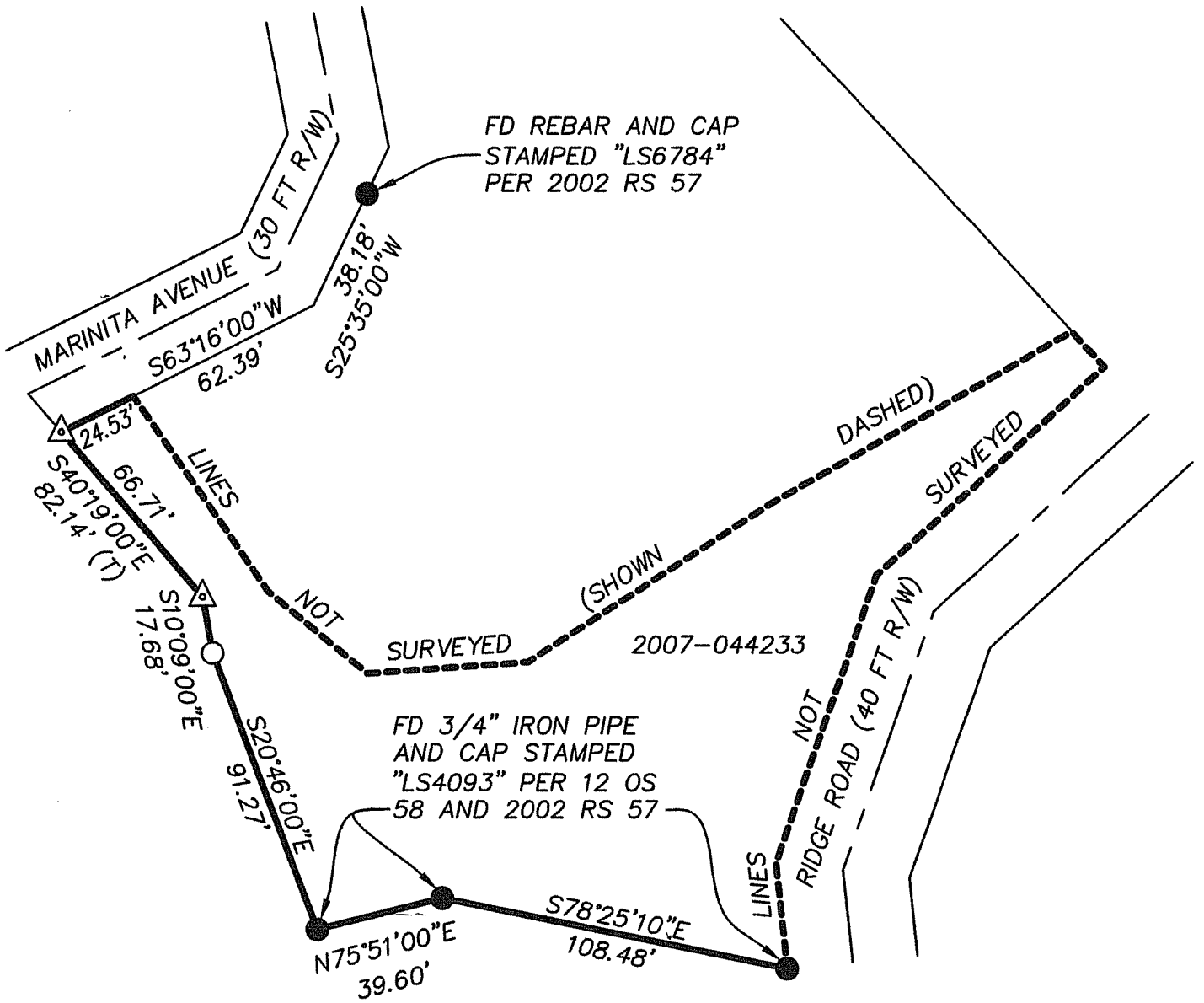
This Corner Record was received AUGUST 11, 2009 and examined and filed SEPTEMBER 9, 2009.

Signed *Craig Tackabery* P.L.S. or R.C.E. No.: 7128

Title COUNTY SURVEYOR

County Surveyor's Comment \_\_\_\_\_





**LEGEND**

NOTE: DISTANCES AND DIMENSIONS SHOWN HEREON ARE GIVEN IN FEET AND DECIMALS THEREOF.

- BOUNDARY
- CENTERLINE
- LINE NOT SURVEYED
- FOUND MONUMENT AS NOTED
- SET NAIL AND 3/4" WASHER "RCE 19893"
- SET 5/8" REBAR AND CAP "RCE 19893"
- TOTAL = (T)

