

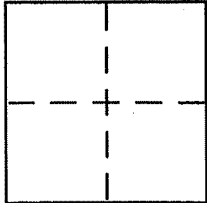
CORNER RECORD

Document Number 013-310-04,-11,-19,20

City of San Rafael

County of Marin, California

Brief Legal Description Lots 3,4,5 & 11, 20 Maps 70



CORNER TYPE

Government Corner Control
Meander Property
Rancho Other
Date of Survey October 2005

COORDINATES (Optional)

N. _____
E. _____
Zone _____ NAD27 NAD83
NAD83 Epoch _____
Elev. _____
Vert. Datum: NGVD29 NAVD88
Meas. Units: Metric Imperial

Corner - Left as found Found and tagged Established Reestablished Rebuilt

Identification and type of corner found: Evidence used to identify or procedure used to establish or reestablish the corner:

See Page 2 of 2

A description of the physical condition of the monument as found and as set or reset:

See Page 2 of 2

SURVEYOR'S STATEMENT

This Corner Record was prepared by me or under my direction in conformance with the Land Surveyor's Act on 1/15/06

Signed [Signature] P.L.S or R.C.E. No. 6784

COUNTY SURVEYOR'S STATEMENT

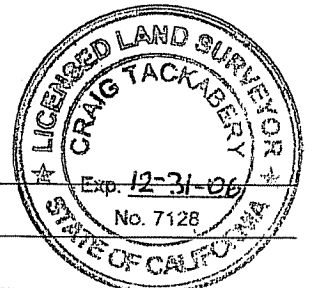
This Corner Record was received JANUARY 19, 2006

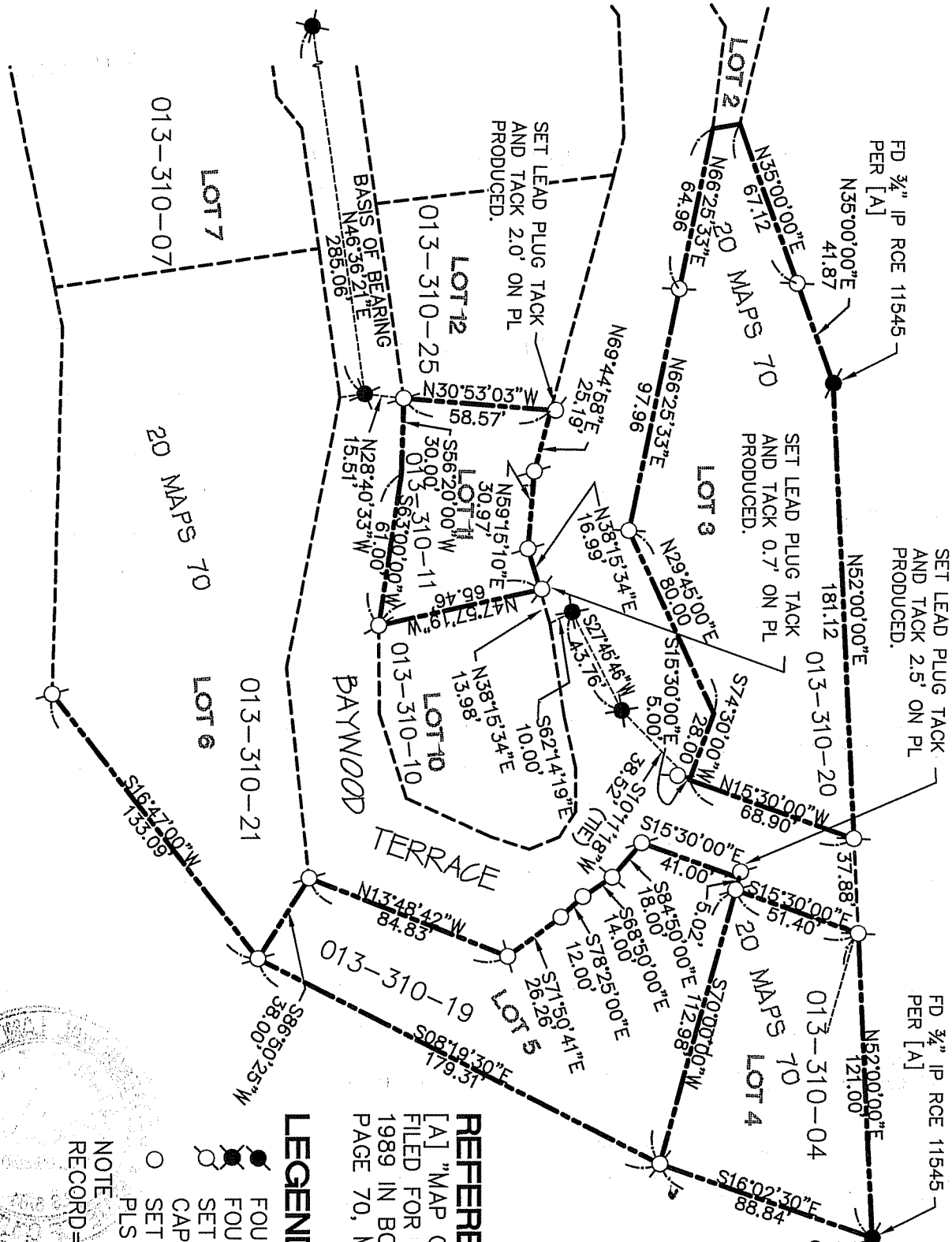
and examined and filed FEBRUARY 21, 2006

Signed [Signature] P.L.S or R.C.E. No. 7128

Title COUNTY SURVEYOR

County Surveyor's Comment _____

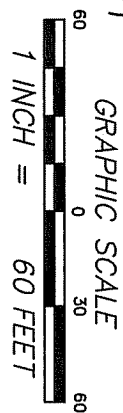




FD 3/4" IP RCE 11545
PER [A]
N35°00'00"E
41.87

SET LEAD PLUG TACK
AND TACK 2.5' ON PL
PRODUCED.
N52°00'00"E
181.12

FD 3/4" IP RCE 11545
PER [A]
N52°00'00"E
121.00



REFERENCE

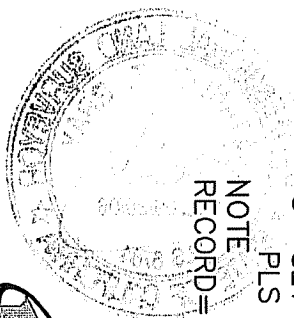
[A] "MAP OF BAYWOOD TERRACE...
FILED FOR RECORD NOVEMBER 9,
1989 IN BOOK 20 OF MAPS, AT
PAGE 70, MARIN COUNTY RECORDS.

LEGEND

- FOUND AS NOTED
- FOUND CITY MONUMENT
- SET 5/8" REBAR WITH CAP, PLS 6784
- SET MAG NAIL & TAG PLS 6784

NOTE
RECORD=MEASURED

CORNER RECORD



MERRIDIAN SURVEYING
ENGINEERING, INC.
777 GARDEN AVE. SUITE 200
SAN FRANCISCO, CA 94133
(415) 441-1111
merridiansurveying.com
03039-A
777 GARDEN AVE. SUITE 200
SAN FRANCISCO, CA 94133
(415) 441-1111