

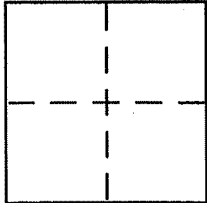
**CORNER RECORD**

Document Number 013-310-04,-11,-19,20

City of San Rafael

County of Marin, California

Brief Legal Description Lots 3,4,5 & 11, 20 Maps 70



**CORNER TYPE**

Government Corner  Control   
Meander  Property   
Rancho  Other   
Date of Survey October 2005

**COORDINATES (Optional)**

N. \_\_\_\_\_  
E. \_\_\_\_\_  
Zone \_\_\_\_\_ NAD27  NAD83   
NAD83 Epoch \_\_\_\_\_  
Elev. \_\_\_\_\_  
Vert. Datum: NGVD29  NAVD88   
Meas. Units: Metric  Imperial

Corner - Left as found  Found and tagged  Established  Reestablished  Rebuilt

Identification and type of corner found: Evidence used to identify or procedure used to establish or reestablish the corner:

See Page 2 of 2

A description of the physical condition of the monument as found and as set or reset:

See Page 2 of 2

**SURVEYOR'S STATEMENT**

This Corner Record was prepared by me or under my direction in conformance with the Land Surveyor's Act on 1/15/06

Signed [Signature] P.L.S or R.C.E. No. 6784

**COUNTY SURVEYOR'S STATEMENT**

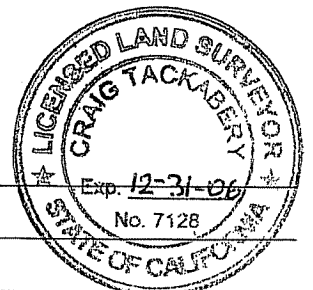
This Corner Record was received JANUARY 19, 2006

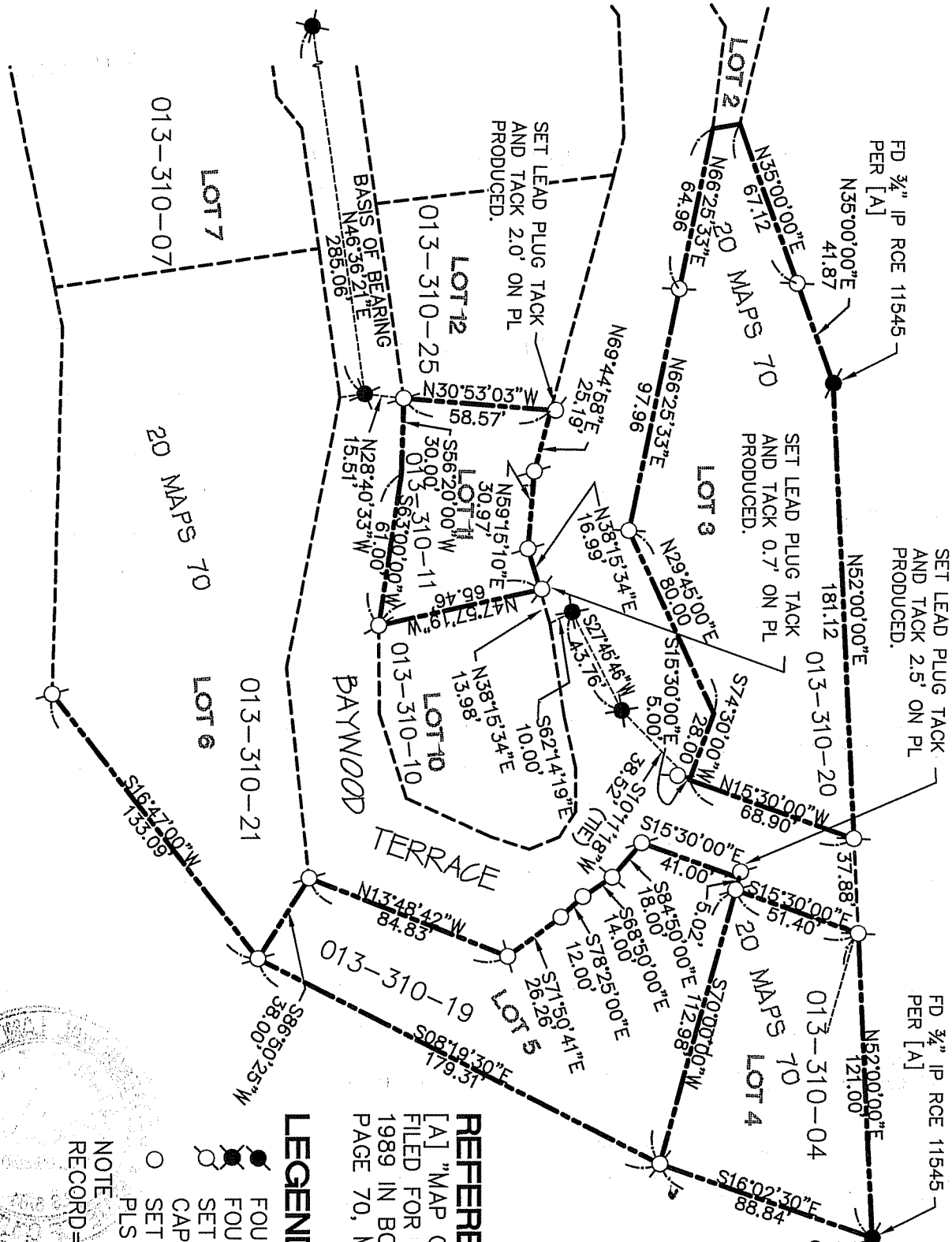
and examined and filed FEBRUARY 21, 2006

Signed [Signature] P.L.S or R.C.E. No. 7128

Title COUNTY SURVEYOR

County Surveyor's Comment \_\_\_\_\_

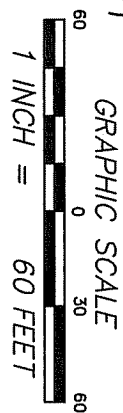




FD 3/4" IP RCE 11545  
PER [A]  
N35°00'00"E  
41.87

SET LEAD PLUG TACK  
AND TACK 2.5' ON PL  
PRODUCED.  
N52°00'00"E  
181.12

FD 3/4" IP RCE 11545  
PER [A]  
N52°00'00"E  
121.00



**REFERENCE**  
[A] "MAP OF BAYWOOD TERRACE...  
FILED FOR RECORD NOVEMBER 9,  
1989 IN BOOK 20 OF MAPS, AT  
PAGE 70, MARIN COUNTY RECORDS.

**LEGEND**

- FOUND AS NOTED
- FOUND CITY MONUMENT
- SET 5/8" REBAR WITH CAP, PLS 6784
- SET MAG NAIL & TAG PLS 6784

NOTE  
RECORD=MEASURED

**CORNER RECORD**



**MERRIDIAN SURVEYING**  
ENGINEERING, INC.  
777 GULF AVE. SUITE 200  
SAN FRANCISCO, CA 94134  
(415) 441-1111  
merridiansurveying.com  
03039-A  
777 GULF AVE. SUITE 200  
SAN FRANCISCO, CA 94134  
(415) 441-1111