

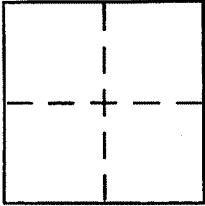
CORNER RECORD

Document Number 013-310-02

City of SAN RAFAEL

County of Marin, California

Brief Legal Description Lot 2, 20 Maps 70



CORNER TYPE

- Government Corner Control
- Meander Property
- Rancho Other
- Date of Survey _____

COORDINATES (Optional)

N. _____
 E. _____
 Zone _____ NAD27 NAD83
 NAD83 Epoch _____
 Elev. _____
 Vert. Datum: NGVD29 NAVD88
 Meas. Units: Metric Imperial

Corner - Left as found Found and tagged Established Reestablished Rebuilt

Identification and type of corner found: Evidence used to identify or procedure used to establish or reestablish the corner:

See Page 2

A description of the physical condition of the monument as found and as set or reset:

See Page 2

SURVEYOR'S STATEMENT

This Corner Record was prepared by me or under my direction in conformance with the Land Surveyor's Act on 5/28/04

Signed [Signature] P.L.S or R.C.E. No. 6784

COUNTY SURVEYOR'S STATEMENT

This Corner Record was received JUNE 1, 2004

and examined and filed JUNE 22, 2004

Signed [Signature] P.L.S or R.C.E. No. 7128

Title COUNTY SURVEYOR

County Surveyor's Comment _____



LEGEND

- ✖ FOUND STANDARD MONUMENT
- PER 2014 SET 5/8" REBAR WITH CAP, PLS 6784

NOTE
RECORD=MEASURED

REFERENCE

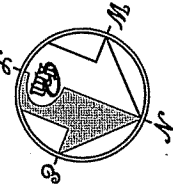
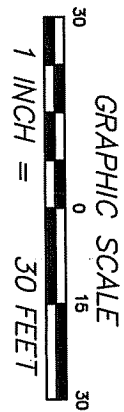
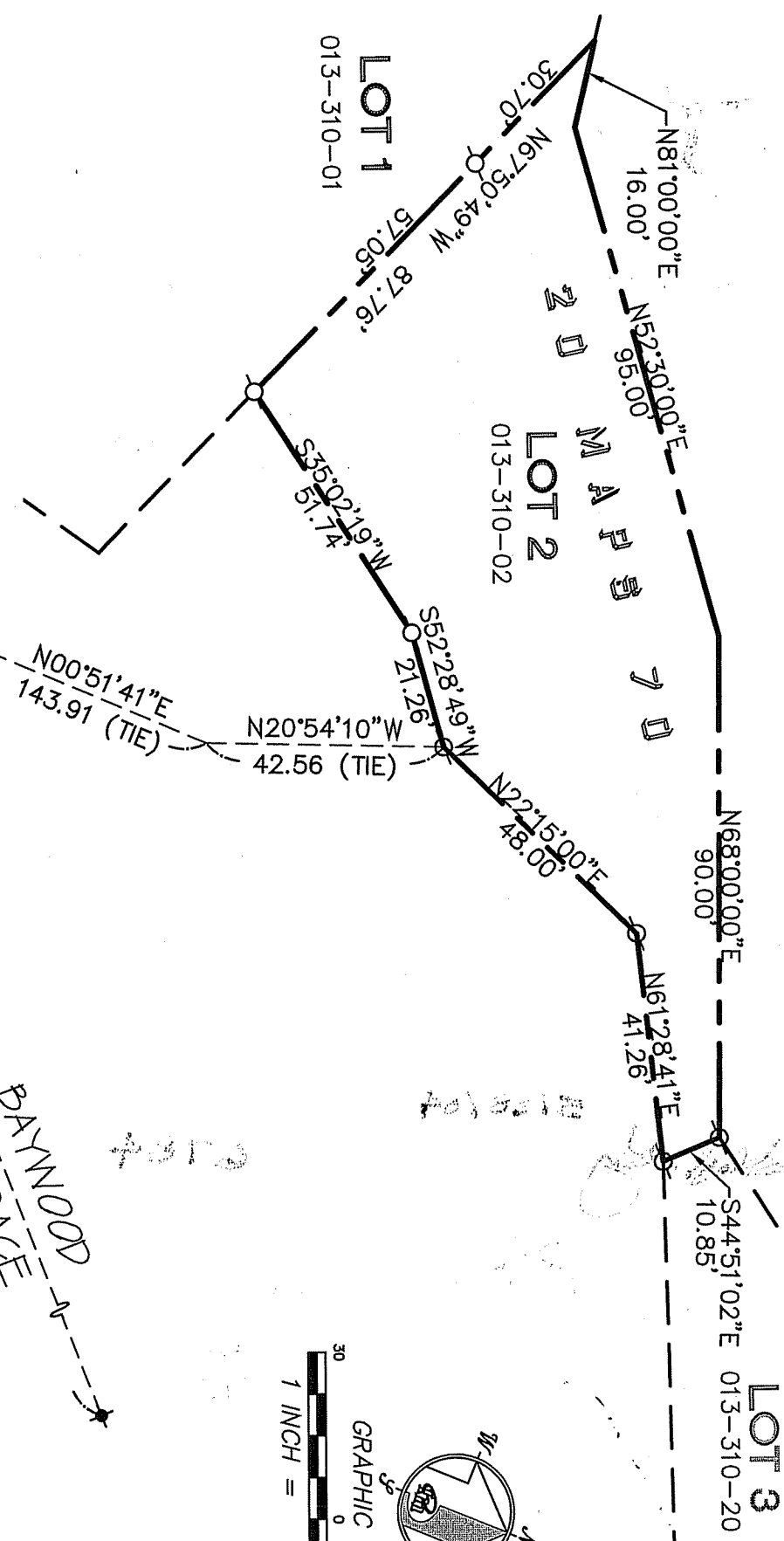
"MAP OF BAYWOOD TERRACE...."
FILED FOR RECORD NOVEMBER 9,
1989 IN BOOK 20 OF MAPS, AT
PAGE 70, MARIN COUNTY RECORDS.

CORNER RECORD

21 MERIDIAN SURVEYING
ENGINEERS, INC.

102 LAW STREET
SUITE 102
SAN FRANCISCO, CA 94102
(415) 442-4141

03039CR2
5/17/2014 10:52 AM
(415) 442-4141



BAYWOOD TERRACE

BASIS OF BEARING
N49°39'21\"/>

REFERENCE



LEGEND



PER 2014 SET 5/8" REBAR WITH CAP, PLS 6784

NOTE

RECORD=MEASURED