

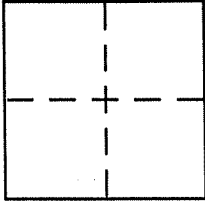
CORNER RECORD

Document Number APN 013-252-17,18&19

City of SAN RAFAEL

County of MARIN, California

Brief Legal Description PCL. 14-A & PTN'S OF PCL 13-A PER 23 P.M. 32 (ALSO LANDS OF RICH, 2004 MAPS 341)



CORNER TYPE

Government Corner Control
Meander Property
Rancho Other
Date of Survey 7-16-08

COORDINATES (Optional)

N. _____
E. _____
Zone _____ NAD27 NAD83
NAD83 Epoch _____
Elev. _____
Vert. Datum: NGVD29 NAVD88
Meas. Units: Metric Imperial

Corner - Left as found Found and tagged Established Reestablished Rebuilt

Identification and type of corner found: Evidence used to identify or procedure used to establish or reestablish the corner:

= SEE OVER =

A description of the physical condition of the monument as found and as set or reset:

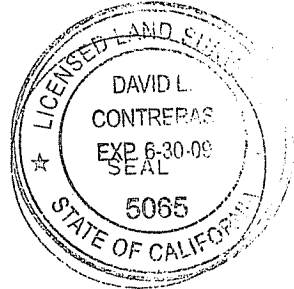
= SEE OVER =

SURVEYOR'S STATEMENT

This Corner Record was prepared by me or under my direction in conformance with

the Land Surveyor's Act on JULY 22 2008

Signed David Montano P.L.S or R.C.E. No. 5065



COUNTY SURVEYOR'S STATEMENT

This Corner Record was received JULY 23, 2008

and examined and filed AUGUST 14, 2008

Signed [Signature] P.L.S or R.C.E. No. 7128

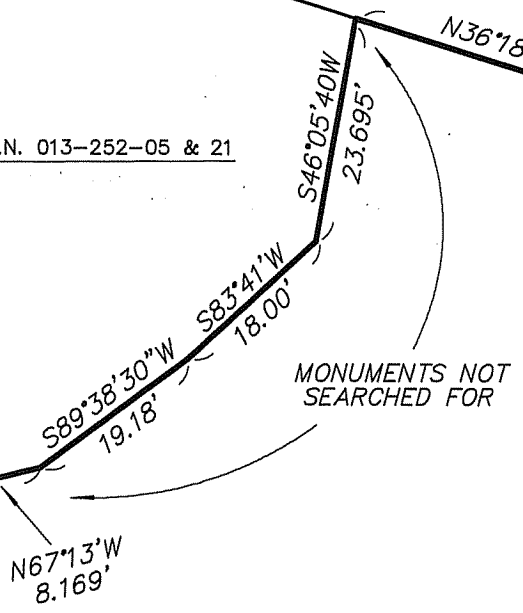
Title COUNTY SURVEYOR



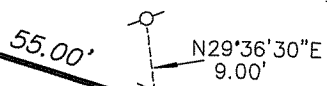
County Surveyor's Comment _____

BRET HARTE LANE
(30' RIGHT-OF-WAY)

A.P.N. 013-252-05 & 21



MONUMENTS NOT SEARCHED FOR



S64°05'W
0.10'
NTS

PARCEL A
21 P.M. 91

2004 MAPS 341

A.P.N. 013-252-17,18 & 19

A.P.N. 013-263-16

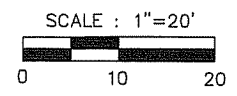
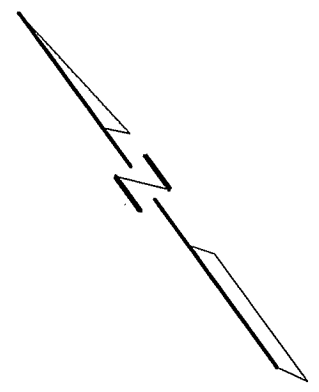
PARCEL 14-A
23 P.M. 32

LEGEND

- = FOUND 3/4" IRON PIPE & TAG, RCE 5561 PER 23 P.M.32
- ⊕ = FOUND 1/2" REBAR & PLASTIC CAP, LS 5065 PER 04 M 342
- ⊙ = SET 1/2" REBAR & PLASTIC CAP, LS 5065
- ⊗ = SET NAIL & TAG, LS 5065

NOTE

1) EASEMENTS ARE NOT SHOWN



SAN RAFAEL CITY LIMITS

S53°45'E

S50°13'W, 0.60' NTS

LOT 1591
10 R.M. 1

A.P.N. 070-321-31

A.P.N. 070-321-40

LOT 1593
10 R.M. 1