

CORNER RECORD

Agency Index 21-029

Document Number 013-222-24

City of SAN RAFAEL, County of MARIN, California

Brief Legal Description LOT 6, MAP OF BLOSSOM COURT (11 R.M. 17)



CORNER TYPE

COORDINATES (Optional)

Government Corner Control
 Meander Property
 Rancho Other
 Date of Survey 2/23/2021

N. _____ E. _____
 Elevation _____
 Units Metric U.S. Survey Foot
 Horizontal Datum _____
 Zone _____ Epoch Date _____
 Vertical Datum _____
 Complies with Public Resources Code §§8801-8819
 Complies with Public Resources Code §§8801-8902

PLS Act Ref.: 8765(d) 8771 8773 Other:

Corner/Monument: Left as found Established Rebuilt Pre-Construction
 Found and tagged Reestablished Referenced Post-Construction

Narrative of corner identified and monument as found, set, reset, replaced, or removed.

See sheet #2 for description(s)

SURVEYOR'S STATEMENT

This Corner Record was prepared by me or under my direction in conformance with

the Professional Land Surveyor's Act on MARCH 2, 2021

Signed *Patrick M. Rei* P.L.S. or R.C.E. No. 8178



COUNTY SURVEYOR'S STATEMENT

This Corner Record was received 3-9-21

and examined and filed 5-12-21

Signed *John R. Semerad* P.L.S. or R.C.E. No. 9292

Title DEPUTY

County Surveyor's Comment

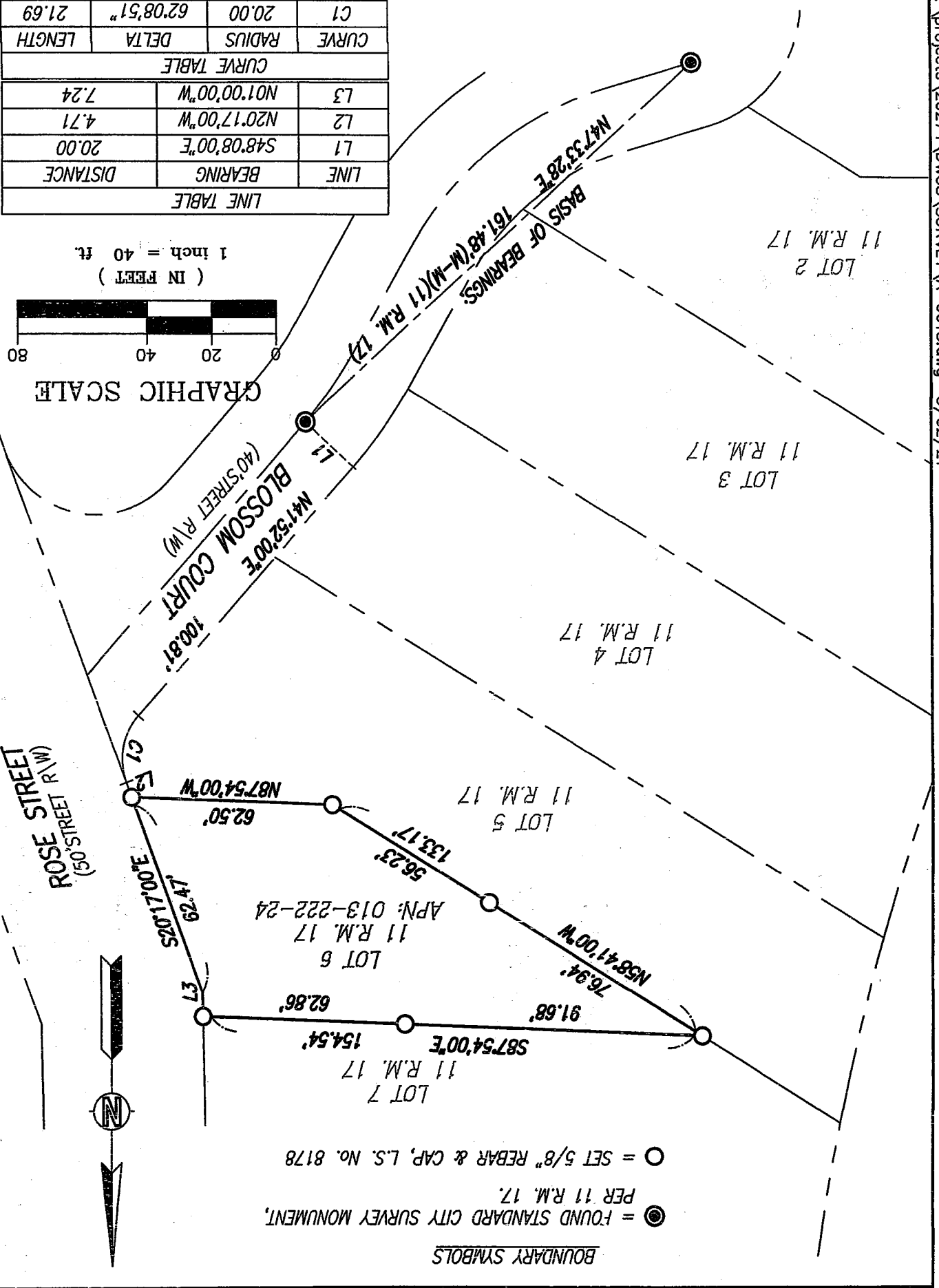
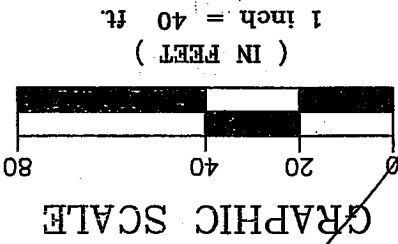


P:\prc\20274\DWGS\SURVEY\A-6618.dwg

A.P.N. 013-222-24

KSR JOB# 20274 /A-6618

LINE TABLE		
LINE	BEARING	DISTANCE
L1	S48°08'00"E	20.00
L2	N20°17'00"W	4.71
L3	N01°00'00"W	7.24
CURVE TABLE		
CURVE	RADIUS	DELTA
C1	20.00	62°08'51"
		21.69



Agency Index

Document Number