

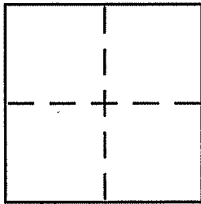
**CORNER RECORD**

Document Number APN 013-231-60

City of SAN RAFAEL

County of \_\_\_\_\_, California

Brief Legal Description PARCEL 2 PER 9 PM 81



**CORNER TYPE**

Government Corner  Control   
Meander  Property   
Rancho  Other   
Date of Survey 04-08-10

**COORDINATES (Optional)**

N. \_\_\_\_\_  
E. \_\_\_\_\_  
Zone \_\_\_\_\_ NAD27  NAD83   
NAD83 Epoch \_\_\_\_\_  
Elev. \_\_\_\_\_  
Vert. Datum: NGVD29  NAVD88   
Meas. Units: Metric  Imperial

Corner - Left as found  Found and tagged  Established  Reestablished  Rebuilt

Identification and type of corner found: Evidence used to identify or procedure used to establish or reestablish the corner:

SEE PAGE 2 OF 2

A description of the physical condition of the monument as found and as set or reset:

SEE PAGE 2 OF 2

**SURVEYOR'S STATEMENT**

This Corner Record was prepared by me or under my direction in conformance with the Land Surveyor's Act on 6/4 2010

Signed [Signature] P.L.S. or R.C.E. No. 6784

**COUNTY SURVEYOR'S STATEMENT**

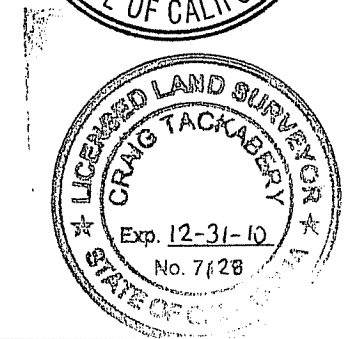
This Corner Record was received MAY 10, 2010

and examined and filed JUNE 21, 2010

Signed [Signature] P.L.S. or R.C.E. No. 7128

Title COUNTY SURVEYOR

County Surveyor's Comment \_\_\_\_\_





### LEGEND

- SET 5/8" REBAR WITH CAP, PLS 6784
- FOUND CONCRETE NAIL IN SIDEWALK, ACCEPTED AS MONUMENTS PER [B] AND [C]

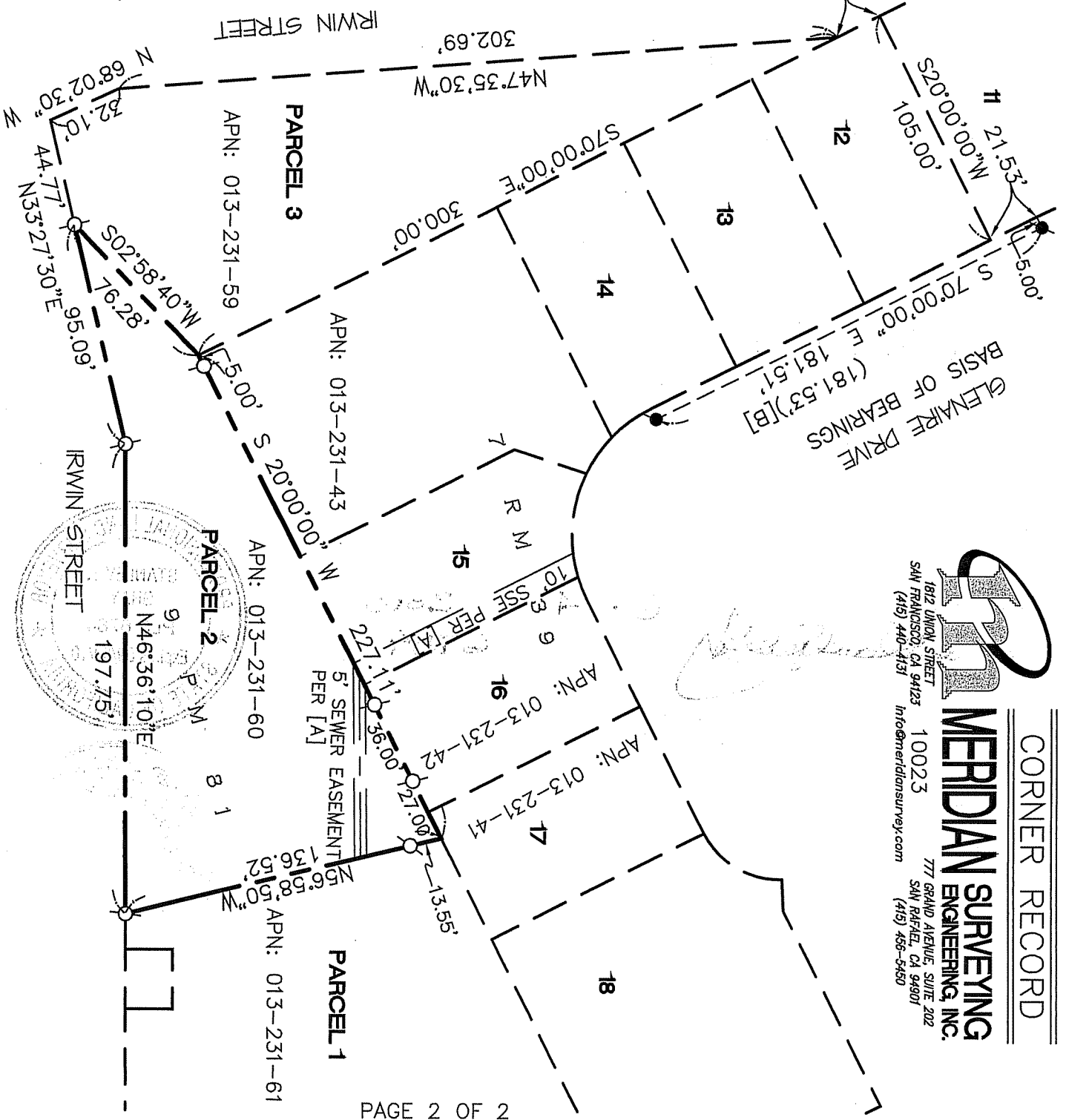
### REFERENCE

[A] "PARCEL MAP, CARRERAS LAND DIVISION" FILED FOR RECORD MARCH 6, 1974 IN BOOK 9 OF PARCEL MAPS, AT PAGE 81, MARIN COUNTY RECORDS.

[B] "MAP OF GLENAIRE SUBDIVISION" FILED FOR RECORD JULY 16, 1951 IN VOLUME 7 OF MAPS AT PAGE 39, MCR.

[C] RECORD OF SURVEY, LANDS OF TURNQUIST, FILED FOR RECORD JANUARY 21, 2003 IN BOOK 2003 OF MAPS AT PAGE 10. MCR.

NOTE  
RECORD=MEASURED



### CORNER RECORD



**MERIDIAN SURVEYING ENGINEERING, INC.**  
 1812 UNION STREET, SAN FRANCISCO, CA 94123 (415) 440-4131  
 777 GRAND AVENUE, SUITE 202, SAN RAFAEL, CA 94901 (415) 456-5450  
 10023  
 info@meridiansurvey.com