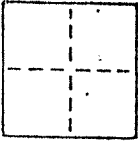


CORNER RECORD

COUNTY OF MARIN T. _____ R. _____ MERIDIAN _____ CALIFORNIA

CORNER TYPE: GOV'T. CORNER MEANDER RANCHO CONTROL OTHER

CORNER IDENTIFICATION — DATE OF VISIT _____ 19__



CORNER — LEFT AS FOUND FOUND AND TAGGED REESTABLISHED OBLITERATED CORNER REBUILT

PHYSICAL DESCRIPTION OF CORNER FOUND; EVIDENCE AND METHOD USED TO IDENTIFY OR REESTABLISH

Set 3/4" iron pipe with plastic plug "LS 3775" at angle point in southerly line of Lot 6 "Map of Glenaire Subdivision" filed in Book 7 of Maps at Page 39; Marin County Records.

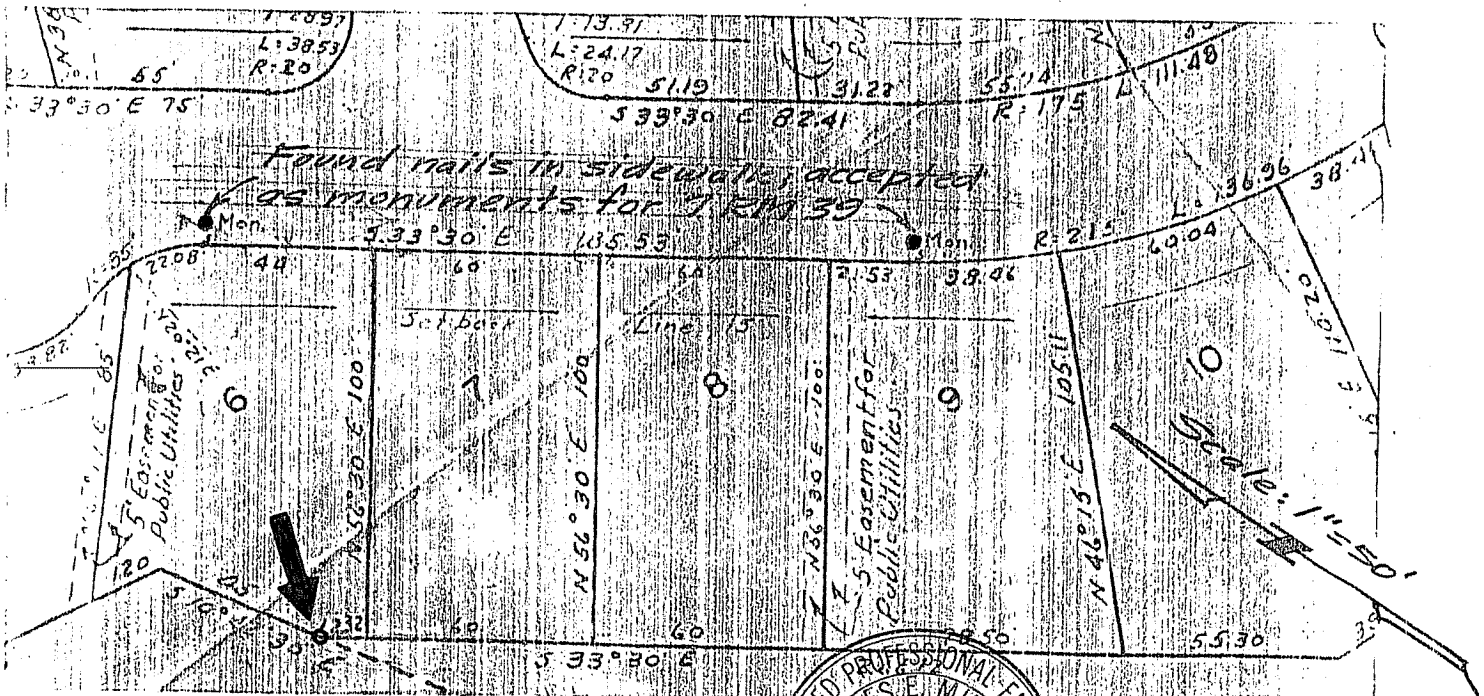
AP #13-231-58

Hom Associates J-1500

PHYSICAL DESCRIPTION OF MONUMENTS REBUILT OR PERPETUATED

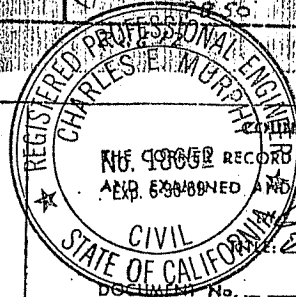
CALIFORNIA COORDINATE SYSTEM ORDER: FIRST SECOND THIRD
 STATIONS USED: NGS (USC & GS) STATE COUNTY OTHER STATION _____ STATION _____
 ZONE _____ ELEVATION _____ NORTHINGS (Y) _____ EASTINGS (X) _____

SKETCH: (Include reference tie or witness points, remarks and topo of area)



SURVEYOR'S CERTIFICATE
 THIS CORNER RECORD WAS PREPARED BY ME OR UNDER MY DIRECTION IN CONFORMANCE WITH THE LAND SURVEYORS ACT ON 10/15 1986
 JOSEPH GRIPPI

SIGNED: _____
 L.S. or R.C.E. No.: _____



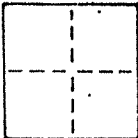
COUNTY SURVEYOR'S CERTIFICATE
 THIS RECORD WAS RECEIVED Nov. 10 1986
 AND EXAMINED AND FILED Nov 17 1986
 Charles E. Murphy
 Deputy County Surveyor

STATEMENT ON BACK OF SHEET

YES NO

CORNER RECORD

COUNTY OF MARIN T. _____ R. _____ MERIDIAN _____ CALIFORNIA _____
 CORNER TYPE: GOVT. CORNER MEANDER RANCHO CONTROL OTHER
 CORNER IDENTIFICATION — DATE OF VISIT _____ 19____



CORNER — LEFT AS FOUND FOUND AND TAGGED REESTABLISHED OBLITERATED CORNER REBUILT

PHYSICAL DESCRIPTION OF CORNER FOUND; EVIDENCE AND METHOD USED TO IDENTIFY OR REESTABLISH

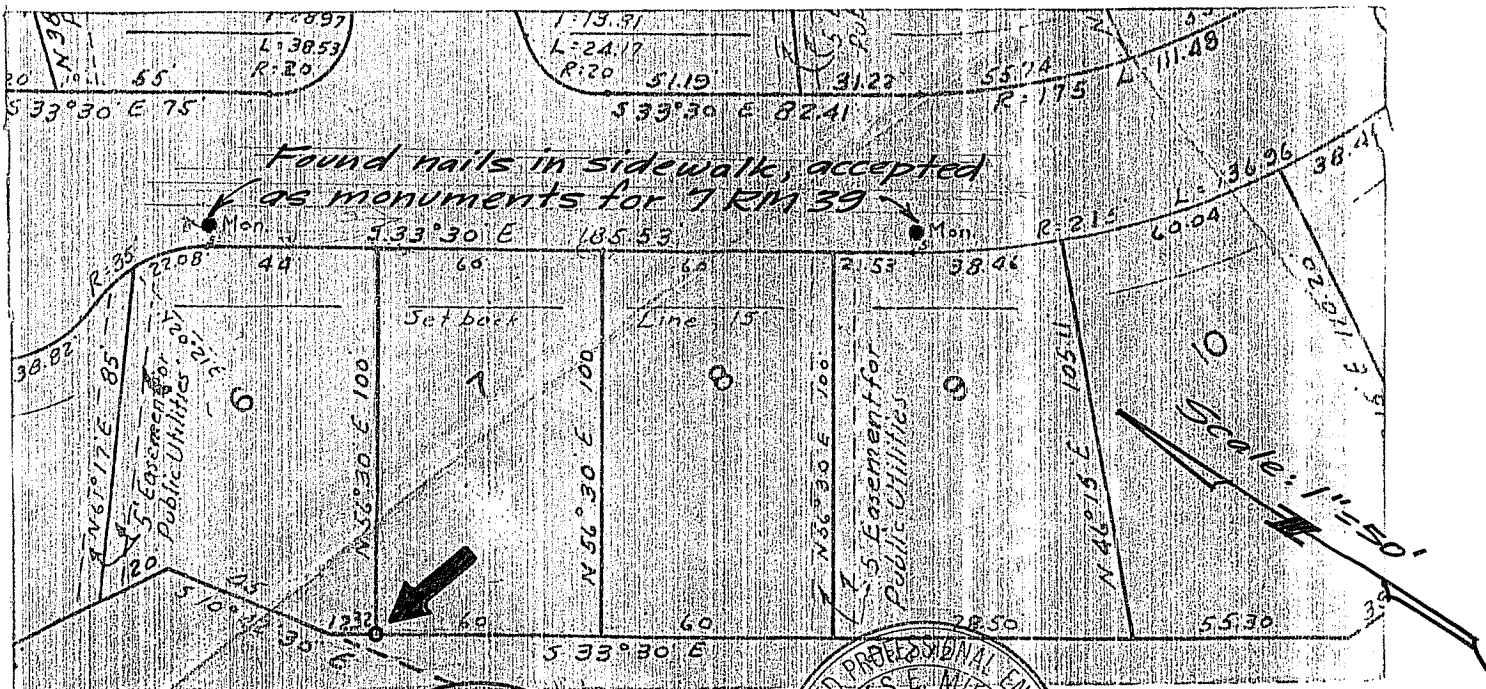
Set 3/4" iron pipe with plastic plug "LS 3775" at southern most corner of Lot 6 "Map of Glenaire Subdivision" filed in Book 7 of Maps at Page 39; Marin County Records.
 AP #13-231-58
 Hom Associates J-1500

PHYSICAL DESCRIPTION OF MONUMENTS REBUILT OR PERPETUATED

As shown

CALIFORNIA COORDINATE SYSTEM ORDER: FIRST SECOND THIRD
 STATIONS USED: NGS (USC & GS) STATE COUNTY OTHER STATION _____ STATION _____
 ZONE _____ ELEVATION _____ NORTHINGS (Y) _____ EASTINGS (X) _____

SKETCH: (Include reference tie or witness points, remarks and topo of area)



SURVEYOR'S CERTIFICATE
 THIS CORNER RECORD WAS PREPARED BY ME OR UNDER MY DIRECTION IN CONFORMANCE WITH THE SURVEYORS ACT ON 10/15 1986
 No. 3775
 SIGNED: _____
 L.S. or R.C.E. No. _____
 STATE OF CALIFORNIA

REGISTERED PROFESSIONAL ENGINEER
 CHARLES E. MURPHY
 COUNTY SURVEYOR'S CERTIFICATE
 THE CORNER RECORD WAS RECEIVED Nov 10 1986
 AND EXAMINED AND FILED Nov 17 1986
 Charles E. Murphy
 Deputy County Surveyor
 STATE OF CALIFORNIA
 DOCUMENT No. _____

STATEMENT ON BACK OF SHEET YES NO

CORNER RECORD

COUNTY OF MARIN T. _____ R. _____ MERIDIAN CALIFORN

CORNER TYPE: GOV'T. CORNER MEANDER RANCHO CONTROL OTHER

CORNER IDENTIFICATION — DATE OF VISIT _____ 19____



CORNER — LEFT AS FOUND FOUND AND TAGGED REESTABLISHED OBLITERATED CORNER REBUILT

PHYSICAL DESCRIPTION OF CORNER FOUND; EVIDENCE AND METHOD USED TO IDENTIFY OR REESTABLISH

Set 3/4" iron pipe with plastic plug "LS 3775" at western most corner of Lot 6 "Map of Glenaire Subdivision" filed in Book 7 of Maps at Page 39; Marin County Records.

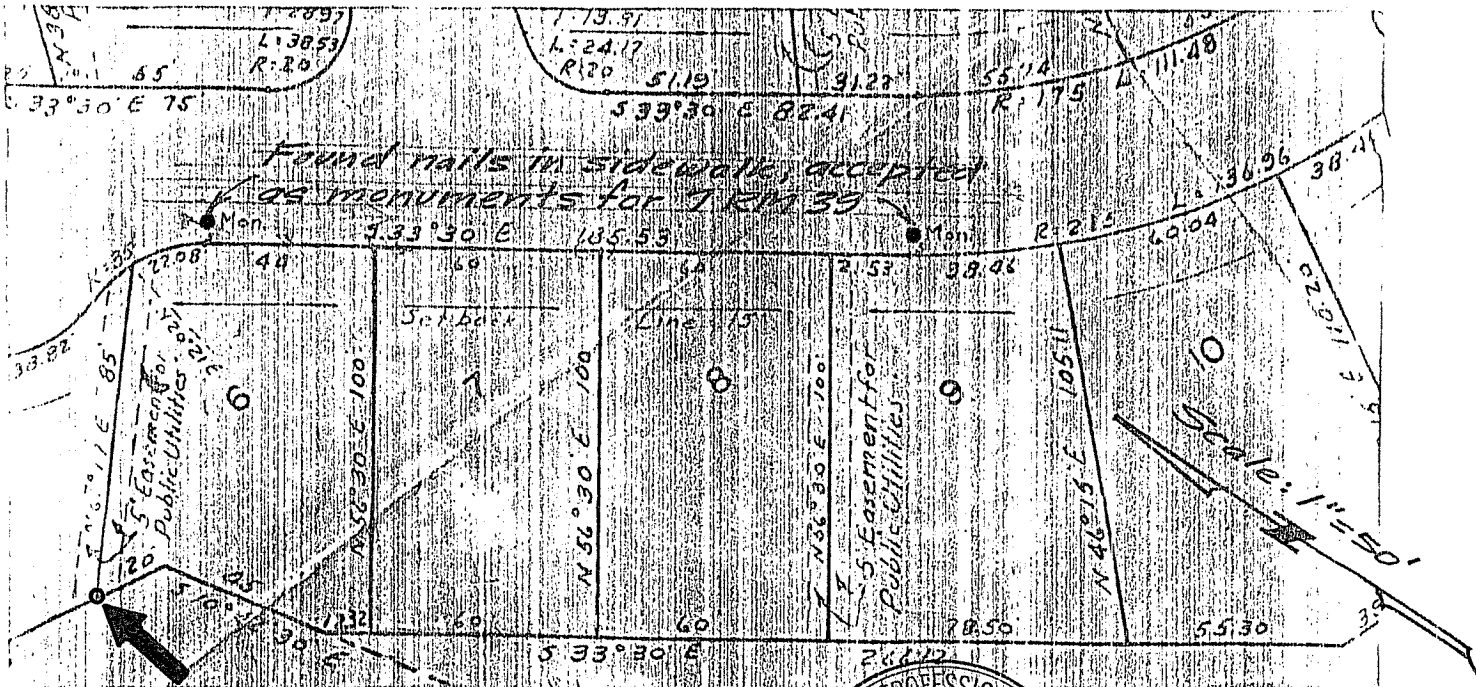
AP #13-231-58
Hom Associates J-1500

PHYSICAL DESCRIPTION OF MONUMENTS REBUILT OR PERPETUATED

As shown

CALIFORNIA COORDINATE SYSTEM ORDER: FIRST SECOND THIRD
 STATIONS USED: NGS (USC & GS) STATE COUNTY OTHER STATION _____ STATION _____
 ZONE _____ ELEVATION _____ NORTHINGS (Y) _____ EASTINGS (X) _____

SKETCH: (Include reference tie or witness points, remarks and topo of area)



SURVEYOR'S CERTIFICATE
 THIS CORNER RECORD WAS PREPARED BY ME UNDER MY DIRECTION IN CONFORMANCE WITH THE LAND SURVEYORS ACT ON 10/15 1986
 JOSEPH GRIPPA

SIGNED: _____
 L.S. or P.C.E. No.: _____

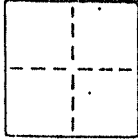
REGISTERED PROFESSIONAL SURVEYOR'S CERTIFICATE
 CHARLES E. MURPHY
 THE CORNER RECORD WAS RECEIVED Nov 10 1986
 AND EXAMINED AND FILED Nov 17 1986
 No. 18652
 Exp. 6-30-89
 TITLE: Deputy County Surveyor
 STATE OF CALIFORNIA

STATEMENT ON BACK OF SHEET

YES NO

CORNER RECORD

COUNTY OF MARIN T. _____ R. _____ MERIDIAN _____ CALIFORNIA
 CORNER TYPE: GOV'T. CORNER MEANDER RANCHO CONTROL OTHER
 CORNER IDENTIFICATION — DATE OF VISIT _____ 19____



CORNER — LEFT AS FOUND FOUND AND TAGGED REESTABLISHED OBLITERATED CORNER REBUILT

PHYSICAL DESCRIPTION OF CORNER FOUND; EVIDENCE AND METHOD USED TO IDENTIFY OR REESTABLISH

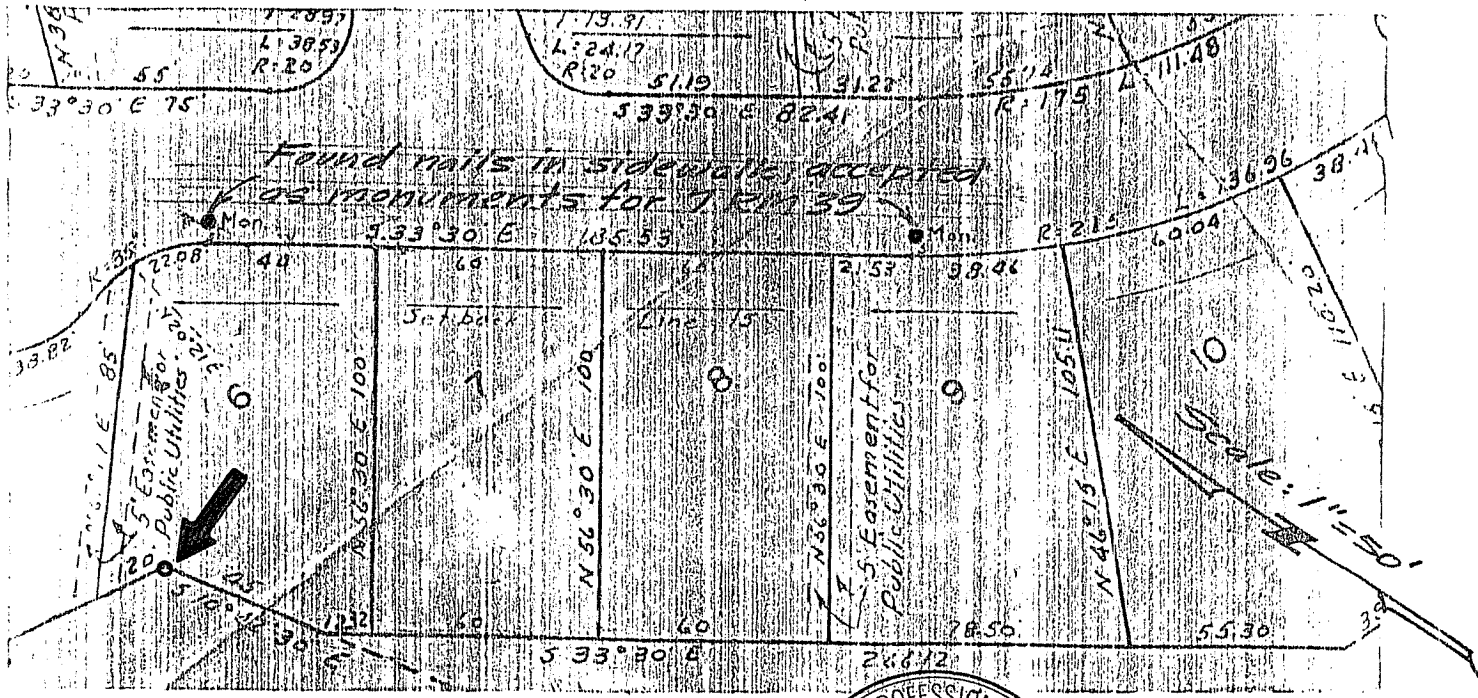
Set a 3/4" iron pipe with plastic plug "LS 3775" at angle point in southerly line of Lot 6 "Map of Glenaire Subdivision" filed in Book 7 of Maps at Page 39; Marin County Records.
 AP #13-231-58
 Hom Associates J-1500

PHYSICAL DESCRIPTION OF MONUMENTS REBUILT OR PERPETUATED

As shown

CALIFORNIA COORDINATE SYSTEM ORDER: FIRST SECOND THIRD
 STATIONS USED: NGS (USC & GS) STATE COUNTY OTHER STATION _____ STATION _____
 ZONE _____ ELEVATION _____ NORTHINGS (Y) _____ EASTINGS (X) _____

SKETCH: (Include reference tie or witness points, remarks and topo of area)



SURVEYOR'S CERTIFICATE
 THIS CORNER RECORD WAS PREPARED BY ME OR UNDER MY DIRECTION IN CONFORMANCE WITH THE CALIFORNIA SURVEYORS ACT ON 10/15 1986
 SIGNED: Joseph Grappi
 L.S. or R.C.E. No. 25 3745 3775
 STATE OF CALIFORNIA

REGISTERED PROFESSIONAL SURVEYOR'S CERTIFICATE
 THE CORNER RECORD WAS RECEIVED Nov 10 1986
 AND EXAMINED AND FILED Nov 17 1986
 No. 18652 BY Charles P. Merrill
 Exp. 6-30-89 TITLE: Deputy County Surveyor
 STATE OF CALIFORNIA
 STATEMENT ON BACK OF SHEET
 YES NO