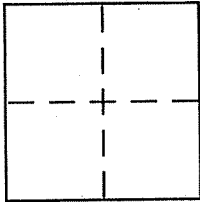


CORNER RECORD

Document Number APN: 013-222-312
County of Marin, California

City of San Rafael

Brief Legal Description Lot 14 per 11 RM 17



CORNER TYPE

Government Corner Control
Meander Property
Rancho Other
Date of Survey 8-1-12

COORDINATES (Optional)

N. _____
E. _____
Zone _____ NAD27 NAD83
NAD83 Epoch _____
Elev. _____
Vert. Datum: NGVD29 NAVD88
Meas. Units: Metric Imperial

Corner - Left as found Found and tagged Established Reestablished Rebuilt

Identification and type of corner found: Evidence used to identify or procedure used to establish or reestablish the corner:

See page 2 of 2.

A description of the physical condition of the monument as found and as set or reset:

See page 2 of 2.

SURVEYOR'S STATEMENT

This Corner Record was prepared by me or under my direction in conformance with the Land Surveyor's Act on 9/6/2012

Signed [Signature] P.L.S or R.C.E. No. 6784



COUNTY SURVEYOR'S STATEMENT

This Corner Record was received SEPTEMBER 26, 2012

and examined and filed OCTOBER 31, 2012

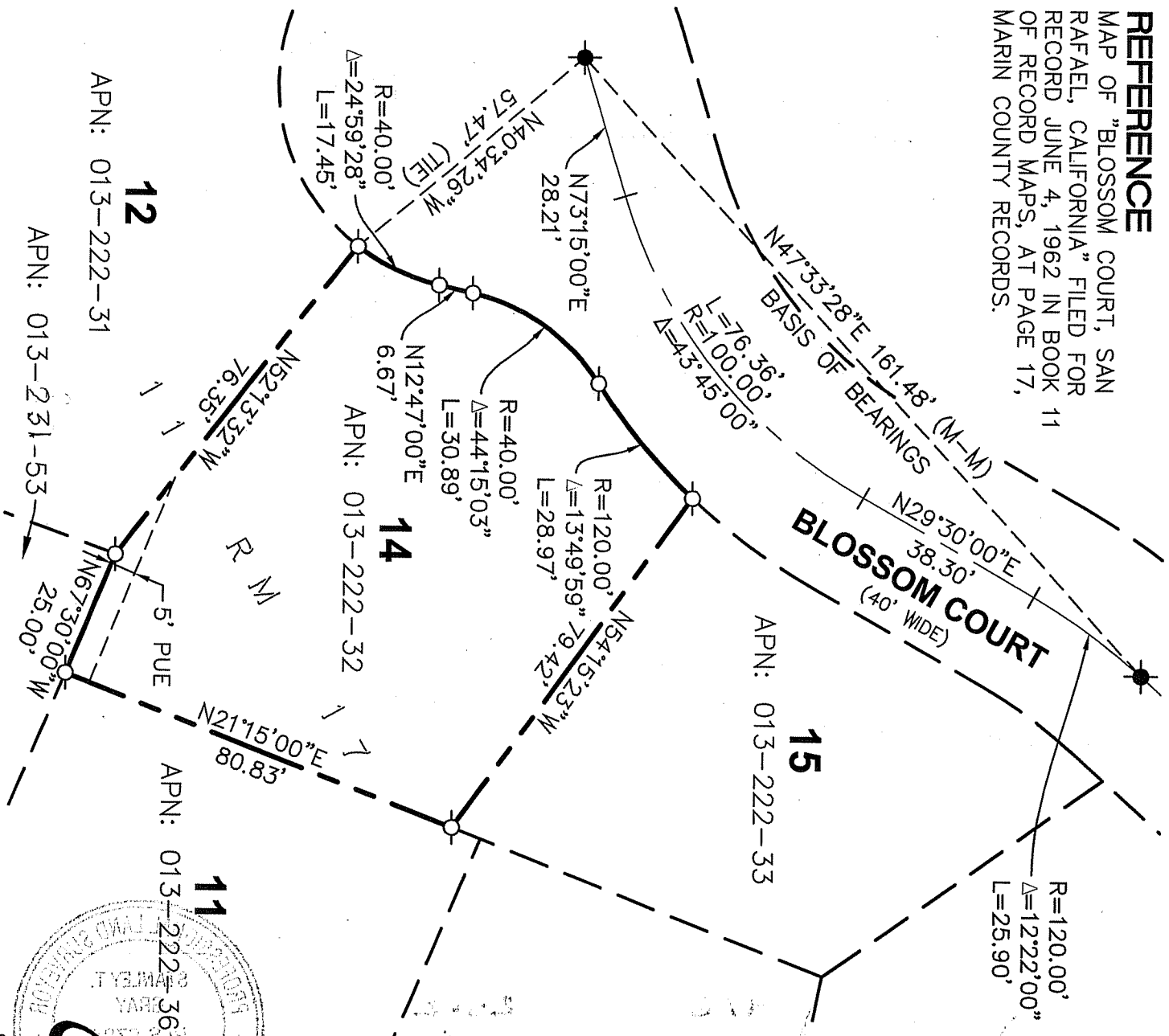
Signed [Signature] P.L.S or R.C.E. No. 7128

Title COUNTY SURVEYOR



County Surveyor's Comment _____

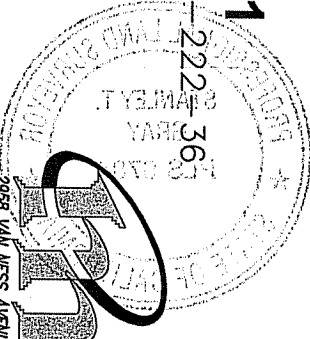
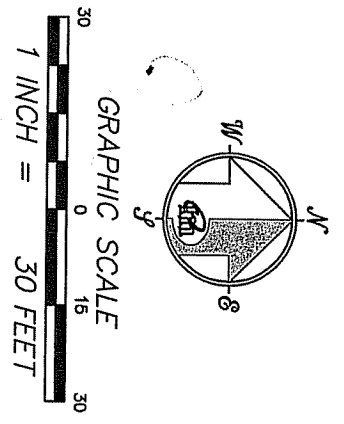
REFERENCE
 MAP OF "BLOSSOM COURT, SAN RAFAEL, CALIFORNIA" FILED FOR RECORD JUNE 4, 1962 IN BOOK 11 OF RECORD MAPS, AT PAGE 17, MARIN COUNTY RECORDS.



LEGEND

- FOUND STANDARD STREET MONUMENT PER 11 RM 17
- SET 5/8" REBAR WITH CAP, PLS 6784
- PUE PUBLIC UTILITY EASEMENT
- - - M-M MONUMENT TO MONUMENT

NOTE
 RECORD=MEASURED



CORNER RECORD

MERIDIAN SURVEYING, INC.

2969 VAN NESS AVENUE
 SAN FRANCISCO, CA 94109
 (415) 440-4131
 info@meridiansurvey.com

12066
 777 GRAND AVENUE, SUITE 202
 SAN RAFAEL, CA 94901
 (415) 456-8450