

CORNER RECORD

Document Number APN013-222-05

City of SAN RAFAEL County of Marin California.

Brief Legal Description: LOT 18 -BRET HARTE TERR. #1 6 RM 91

CORNER TYPE:

Government Corner Control
 Meander Property
 Rancho Other
 Date of Survey _____

COORDINATES

[Optional]
 N> _____
 E> _____
 Zone _____ Datum _____
 Elev> _____

CORNER:----- Left as found Found & Tagged Established Reestablished Rebuilt

Identification & Type of Corner Found: Evidence used to identify or procedure used to establish or reestablish the corner:

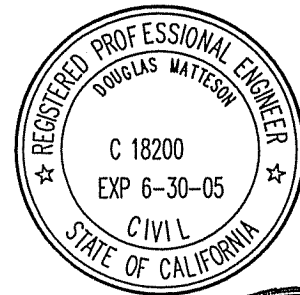
FOUND MONUMENTS PER SUBDIVISION MAP.-7 RM 39

description of the physical condition of the monument as found and as set or reset:
Original corners not found: Set points as shown on reverse.

SURVEYOR'S STATEMENT

The corner record was prepared by me or under my direction in conformance with the Land Surveyors' Act on JAN 2003 2003

Signed: Douglas J. Matteson RCE # C 18200

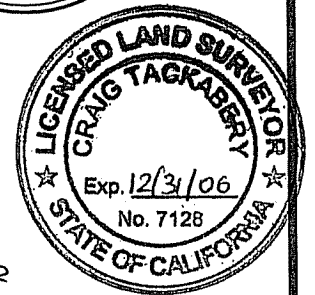


COUNTY SURVEYORS STATEMENT

This corner record was received: JULY 2, 2003

and filed AUGUST 6, 2003

Signed [Signature] Title: COUNTY SURVEYOR



COUNTY SURVEYOR'S COMMENT

LEGEND

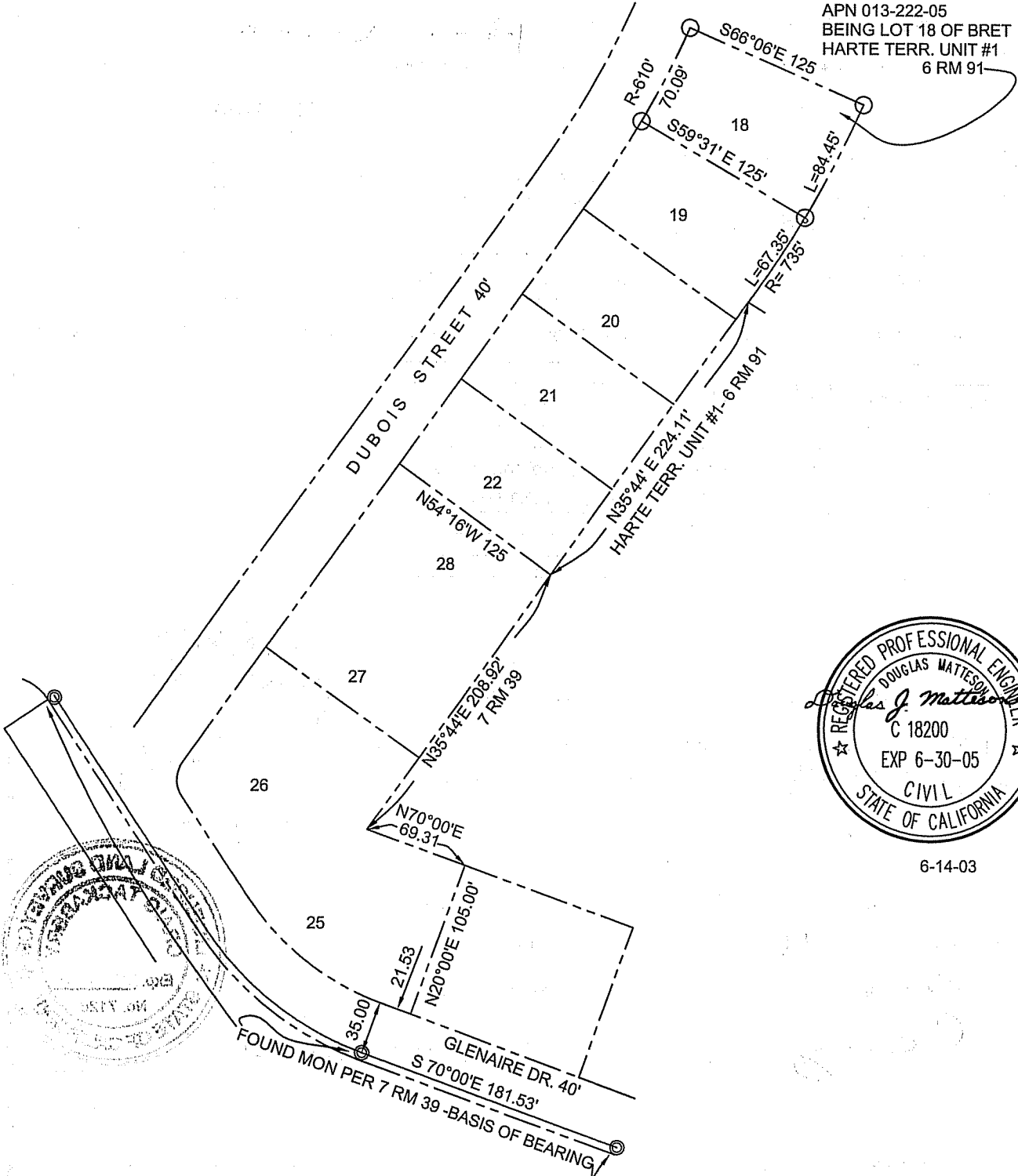
- SET REBAR AND CAP RCE 18200
UNLESS NOTED OTHERWISE
- ⊙ FOUND STD WELL MON.



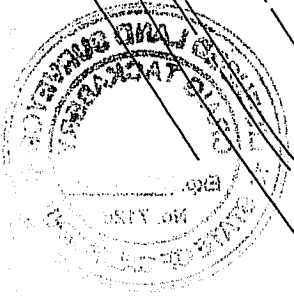
SCALE 1" = 100'

----- PROPERTY LINES

LANDS OF YAMPOLSKI
APN 013-222-05
BEING LOT 18 OF BRET
HARTE TERR. UNIT #1
6 RM 91



6-14-03



MATTESON ENGINEERING AND SURVEYING
SUITE 210A 200 GATE FIVE SAUSALITO, CA