

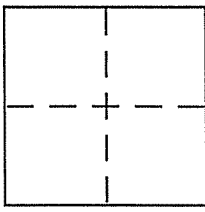
CORNER RECORD

Document Number APN 013-213-13

City of SAN RAFAEL

County of MARIN, California

Brief Legal Description LOT 89 OF 5 MAPS 99



CORNER TYPE

Government Corner Control
Meander Property
Rancho Other
Date of Survey 1/25/06

COORDINATES (Optional)

N. _____
E. _____
Zone _____ NAD27 NAD83
NAD83 Epoch _____
Elev. _____
Vert. Datum: NGVD29 NAVD88
Meas. Units: Metric Imperial

Corner - Left as found Found and tagged Established Reestablished Rebuilt

Identification and type of corner found: Evidence used to identify or procedure used to establish or reestablish the corner:

SEE PAGE 2 OF 2

A description of the physical condition of the monument as found and as set or reset:

SEE PAGE 2 OF 2

SURVEYOR'S STATEMENT

This Corner Record was prepared by me or under my direction in conformance with the Land Surveyor's Act on 1131106

Signed [Signature] P.L.S or R.C.E. No. 6784

COUNTY SURVEYOR'S STATEMENT

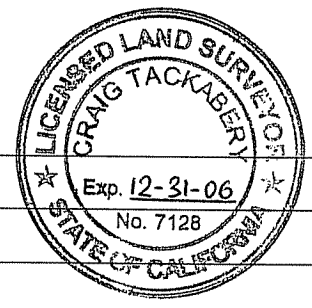
This Corner Record was received FEBRUARY 1, 2006

and examined and filed MARCH 3, 2006

Signed [Signature] P.L.S or R.C.E. No. 7128

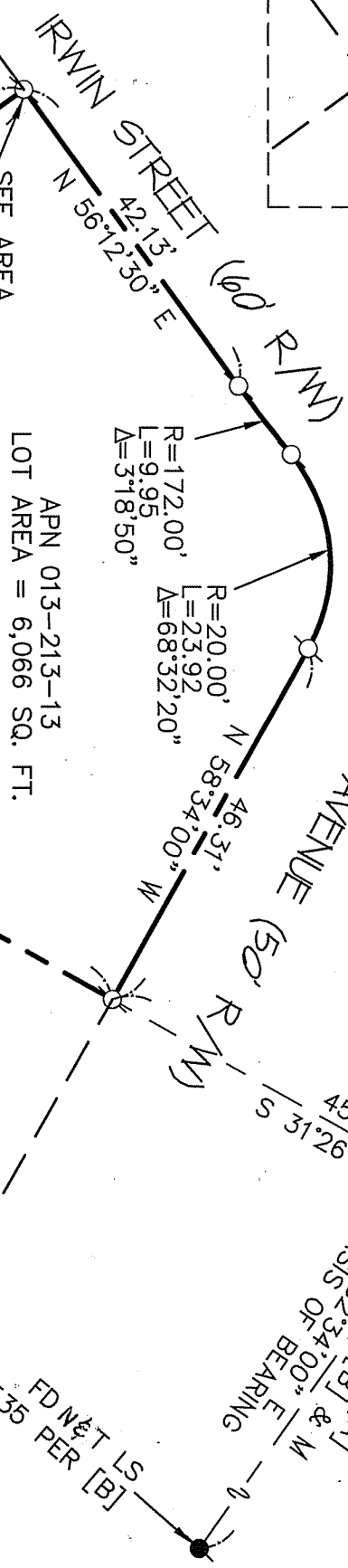
Title COUNTY SURVEYOR

County Surveyor's Comment _____



AREA OF DETAIL
(SCALE 1"=1')

SET RBC PLS 6784
S 56°12'30" E 0.08'

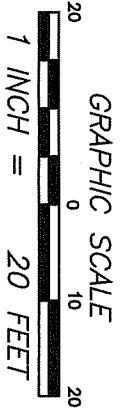
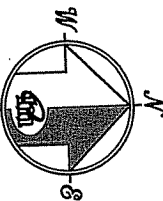
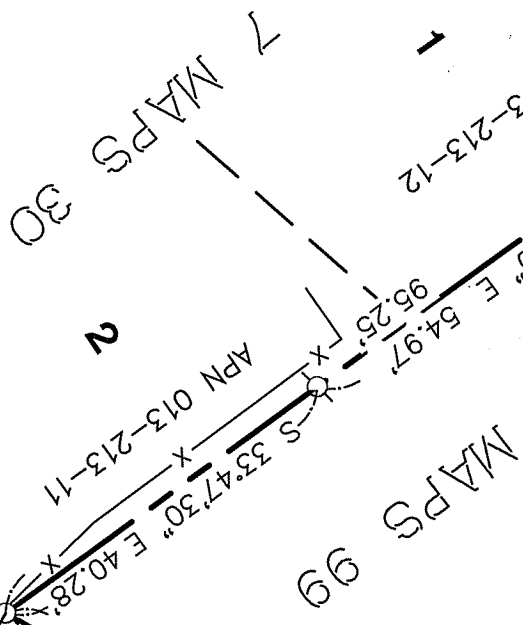


LOT AREA = 6,066 SQ. FT.

FD 2" IRON PIPE PER [B]

509.05' [A]
S 52°34'00" E & M
BASIS OF BEARING

FD N&T LS
2535 PER [B]



REFERENCE

[A] MAP OF BRET HARTE MEADOWS UNIT TWO FILED FOR RECORD AUGUST 3, 1943 IN BOOK 5 OF MAPS, AT PAGE 99, MARIN COUNTY RECORDS.
[B] RECORD OF SURVEY FILED APRIL 29, 2003 IN BOOK 2003 OF MAPS AT PAGE 91, MARIN COUNTY RECORDS.

LEGEND

- FOUND AS NOTED
- SET 5/8" REBAR WITH CAP (RBC), PLS 6784
- NOTE
RECORD=MEASURED

CORNER RECORD

MERIDIAN SURVEYING
ENGINEERING, INC.

1812 UNION STREET
SAN FRANCISCO, CA 94123
(415) 440-4131
Info@meridiansurvey.com

06008
777 GRAND AVENUE, SUITE 202
SAN RAFAEL, CA 94901
(415) 456-8450