

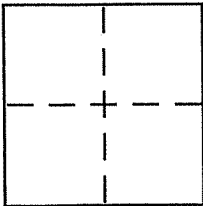
**CORNER RECORD**

Document Number 013-202-14

City of San Rafael

County of Marin, California

Brief Legal Description Por. Lots 55A & 56 7 RM 57 PER 2003 Maps 43



**CORNER TYPE**

Government Corner  Control   
Meander  Property   
Rancho  Other   
Date of Survey 9-25-08

**COORDINATES (Optional)**

N. \_\_\_\_\_  
E. \_\_\_\_\_  
Zone \_\_\_\_\_ NAD27  NAD83   
NAD83 Epoch \_\_\_\_\_  
Elev. \_\_\_\_\_  
Vert. Datum: NGVD29  NAVD88   
Meas. Units: Metric  Imperial

Corner - Left as found  Found and tagged  Established  Reestablished  Rebuilt

Identification and type of corner found: Evidence used to identify or procedure used to establish or reestablish the corner:

See page 2 of 2

A description of the physical condition of the monument as found and as set or reset:

See page 2 of 2

**SURVEYOR'S STATEMENT**

This Corner Record was prepared by me or under my direction in conformance with the Land Surveyor's Act on 9/25 2008

Signed [Signature] P.L.S or R.C.E. No. 6784



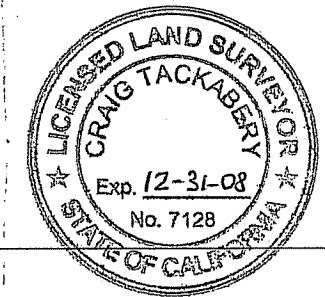
**COUNTY SURVEYOR'S STATEMENT**

This Corner Record was received OCTOBER 14, 2008

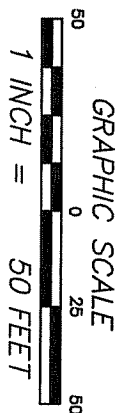
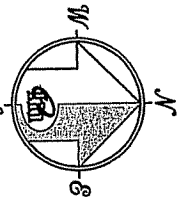
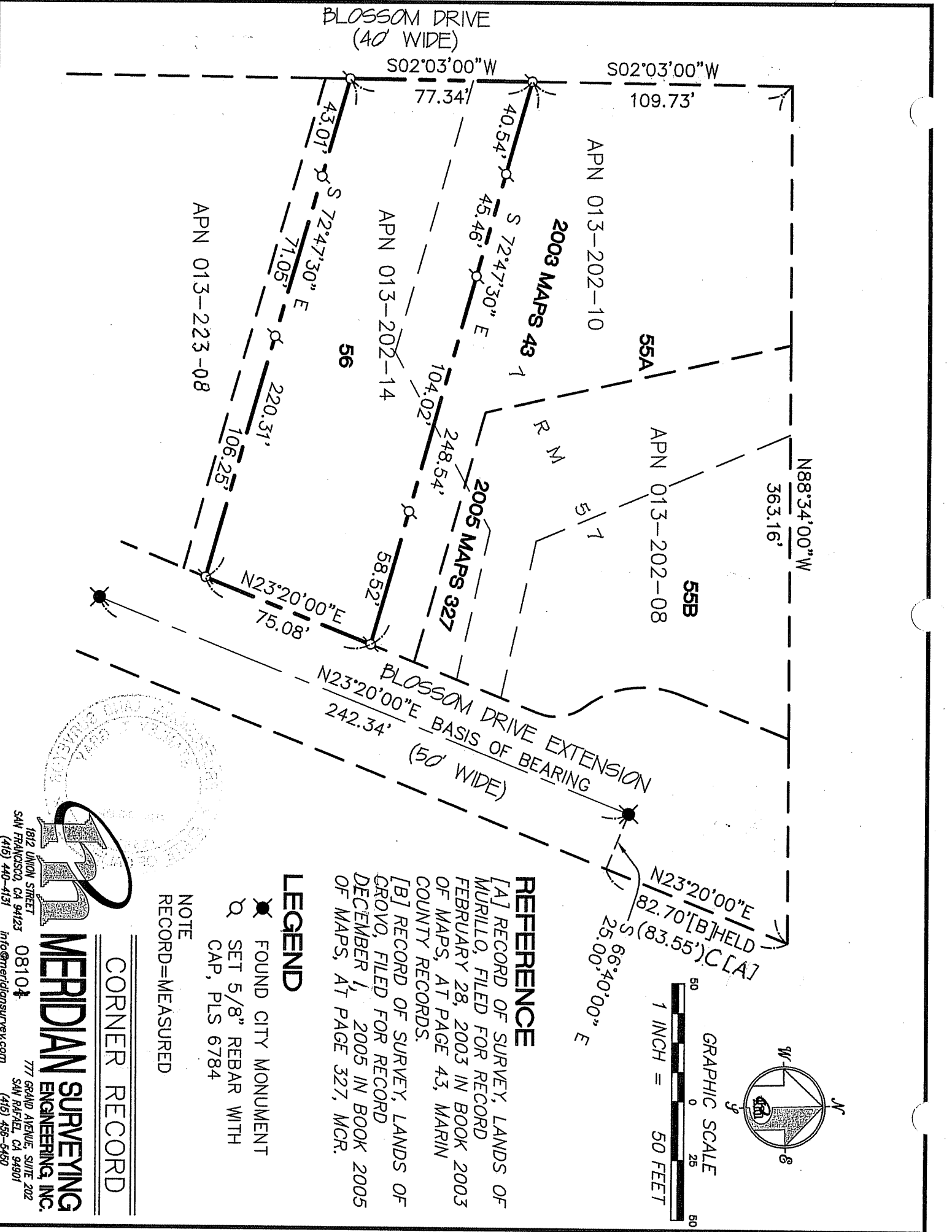
and examined and filed OCTOBER 31, 2008

Signed [Signature] P.L.S or R.C.E. No. 7128

Title COUNTY SURVEYOR



County Surveyor's Comment \_\_\_\_\_



**REFERENCE**

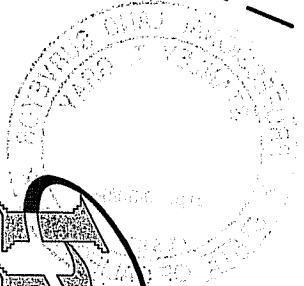
[A] RECORD OF SURVEY, LANDS OF MURILLO, FILED FOR RECORD FEBRUARY 28, 2003 IN BOOK 2003 OF MAPS, AT PAGE 43, MARIN COUNTY RECORDS.  
 [B] RECORD OF SURVEY, LANDS OF GROVO, FILED FOR RECORD DECEMBER 1, 2005 IN BOOK 2005 OF MAPS, AT PAGE 327, MCR.

**LEGEND**

- FOUND CITY MONUMENT
- SET 5/8" REBAR WITH CAP, PLS 6784

NOTE  
 RECORD=MEASURED

**CORNER RECORD**



**MERIDIAN SURVEYING ENGINEERING, INC.**  
 1812 UNION STREET SAN FRANCISCO, CA 94123 (415) 440-4131  
 777 GRAND AVENUE, SUITE 202 SAN RAFAEL, CA 94901 (415) 456-6460