

CORNER RECORD

APN 013-185-12

Document No. 20 PM 27

City of San Rafael County of Marin, California

Brief Legal Description Parcel 2, 20 PM 27



CORNER TYPE

COORDINATES (Optional)

Government Corner Control
Meander Property
Rancho Other
Date of Survey May 09, 2005

N. _____
E. _____
Zone _____ Datum _____
Elev. _____

Corner- Left as found Found and tagged Established Reestablished Rebuilt

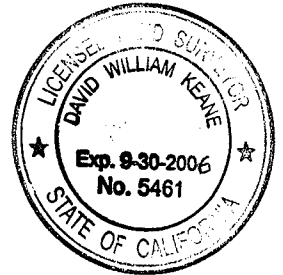
Identification and type of corner found: Evidence used to identify or procedure to establish or reestablish the corner: Established property corners per found monuments on Parcel Two as shown on herein sht. 2 and per "Parcel Map Redivision of Parcel 2 18 PM 55", recorded in Book 20 of Parcel Maps, Page 27, County of Marin.

A description of the physical condition of the monument as found and as set or reset: Set 1/2" rebar w/ plastic cap, LS 5461 at locations shown on herein sht. 2. Found 5/8" rebar w/ plastic cap, RCE 11181, at locations shown on herein sht. 2.

SURVEYOR'S STATEMENT

This Corner Record was prepared by me or under my direction in conformance with the Land Surveyors Act on May 10, 2005.

Signed David W. Keane PLS Number 5461



COUNTY SURVEYOR'S STATEMENT

This Corner Record was received 5-11- 2005 and examined and filed 6-29- 2005.

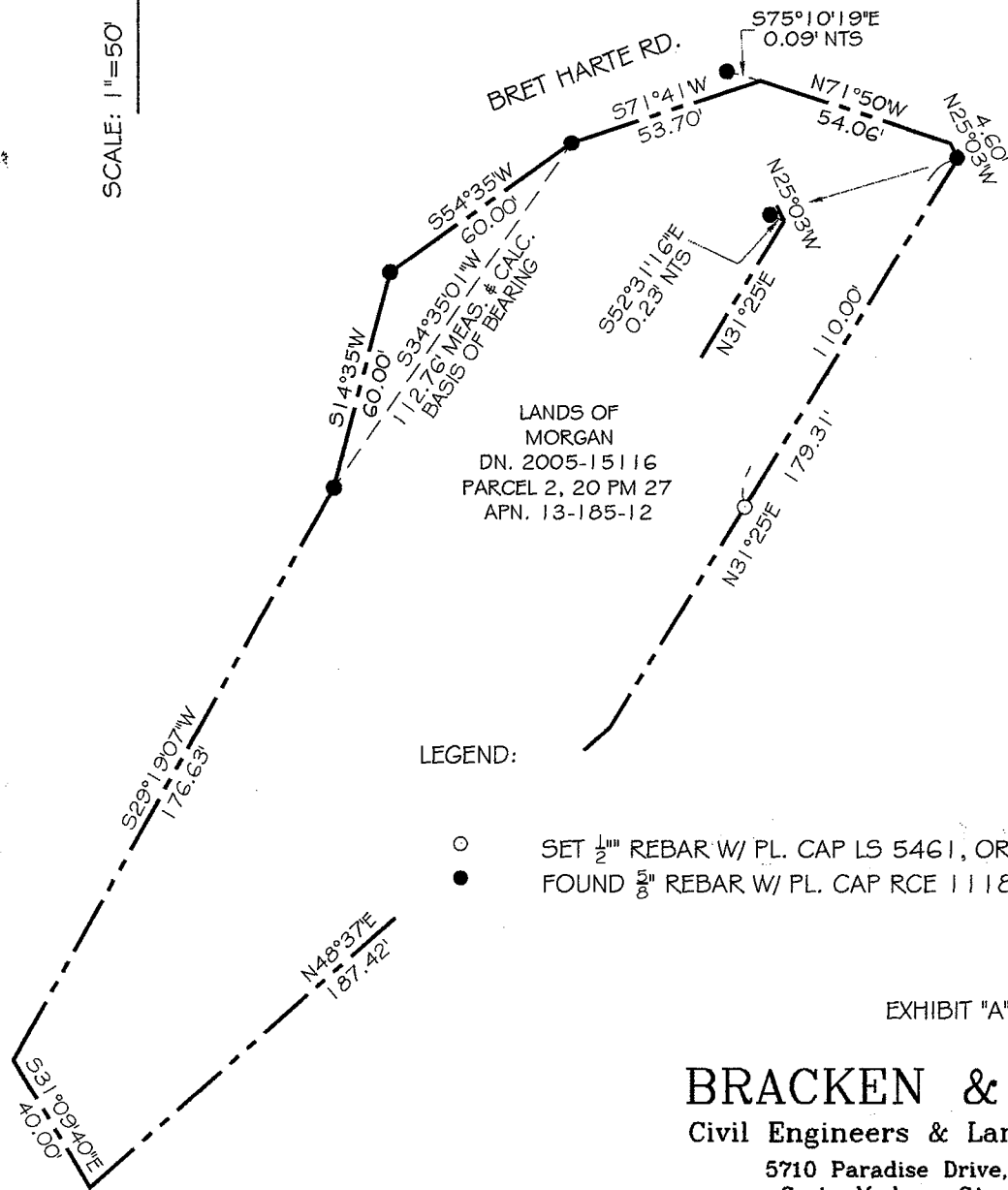
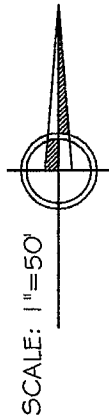
Signed Craig Tackabery Title COUNTY SURVEYOR

County Surveyor's Comments _____



NOTE:

1. ALL DIMENSIONS SHOWN HEREIN ARE PER 20 PM 27 UNLESS OTHERWISE NOTED.
2. ALL DISTANCES AND DIMENSIONS ARE IN FEET AND DECIMALS THEREOF.
3. EASEMENTS IF ANY ARE NOT SHOWN.
4. APN. 13-185-12.



LEGEND:

- SET 1/2" REBAR W/ PL. CAP LS 5461, OR AS SHOWN
- FOUND 5/8" REBAR W/ PL. CAP RCE 11181, PER 20 PM 27

EXHIBIT "A"

BRACKEN & KEANE

Civil Engineers & Land Surveyors

5710 Paradise Drive, Ste. 8

Corte Madera, CA 94925

tel: (415) 927-8801 fax: (415) 927-8803