

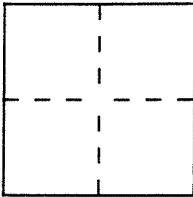
# CORNER RECORD

Document Number 85-40163

City of San Rafael

County of Marin, California

Brief Legal Description Lot Two, Map of La Loma Woodlands; 9 - Maps - 84



### CORNER TYPE

Government Corner  Control   
 Meander  Property   
 Rancho  Other   
 Date of Survey 18 October 1994

### COORDINATES (Optional)

N. \_\_\_\_\_  
 E. \_\_\_\_\_  
 Zone \_\_\_\_\_ Datum \_\_\_\_\_  
 Elev. \_\_\_\_\_

Corner — Left as found  Found and tagged  Established  Reestablished  Rebuilt

Identification and type of corner found: Evidence used to identify or procedure used to establish or reestablish the corner:

Set 3/4" I.D. galvanized iron pipe with plastic plug "L.S. 4794" at the southeasterly corner of Lot Two, Map of La Loma Woodlands; recorded in Book 9 of Maps, at Page 84; Marin County Records. Held original D.C. monument in E. La Loma Court near Lot 15; a basis of bearing from said latter & orig. E. mons. in La Loma Ct. and E. Parat Norte Road.

A description of the physical condition of the monument as found and as set or reset: \_\_\_\_\_

As shown on reverse side

### SURVEYOR'S STATEMENT

This Corner Record was prepared by me or under my direction in conformance with the Land Surveyors' Act on 18 October 1994.

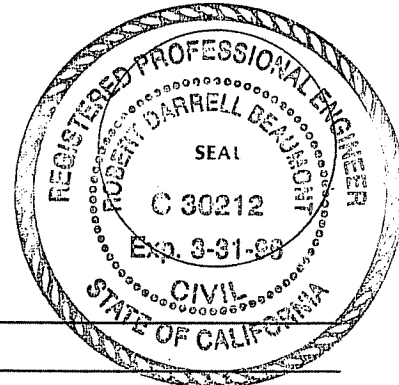
Signed [Signature] L.S. or R.C.E. Number L.S. 4794



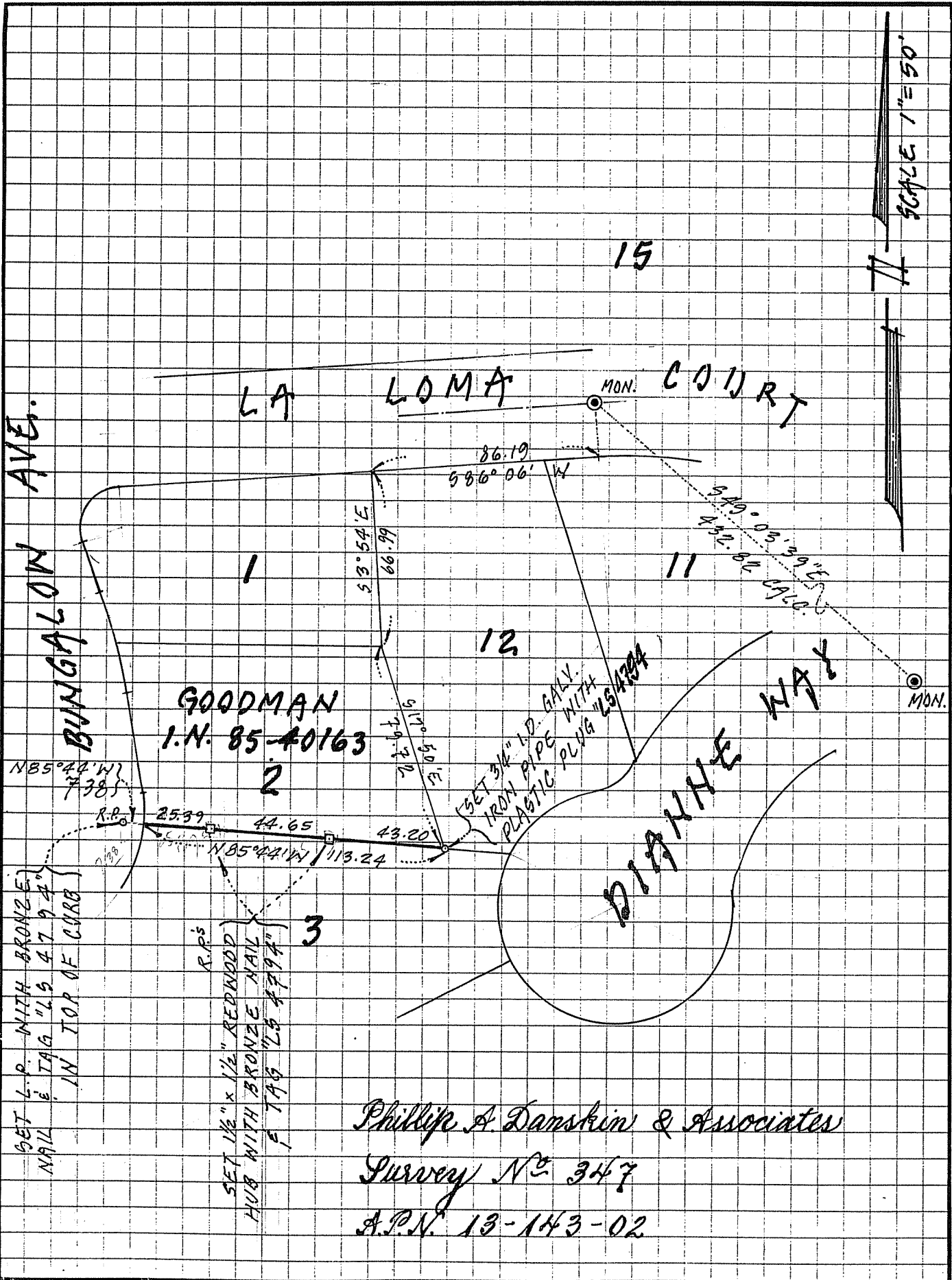
### COUNTY SURVEYOR'S STATEMENT

This Corner Record was received October 21 1994 and examined and filed 10-21 1994.

Signed [Signature] Title DLB



County Surveyor's Comment \_\_\_\_\_



Phillip A. Damskin & Associates  
 Survey No 347  
 A.P.N. 13-143-02