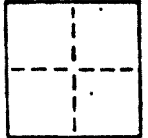


CORNER RECORD

1 of 5

COUNTY OF MARIN T. \_\_\_\_\_ R. \_\_\_\_\_ MERIDIAN \_\_\_\_\_ CALIFORNIA  
CORNER TYPE: GOVT. CORNER  MEANDER  RANCHO  CONTROL  OTHER   
CORNER IDENTIFICATION — DATE OF VISIT 12-01 1988.



A.P. # 13-142-10

CORNER — LEFT AS FOUND  FOUND AND TAGGED  REESTABLISHED OBLITERATED CORNER  REBUILT

PHYSICAL DESCRIPTION OF CORNER FOUND; EVIDENCE AND METHOD USED TO IDENTIFY OR REESTABLISH

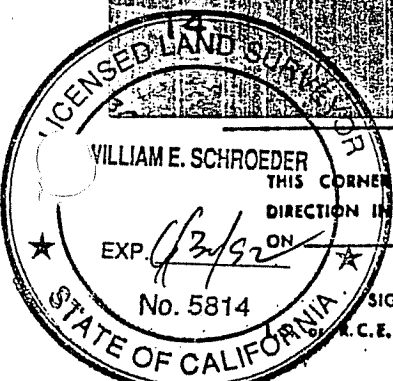
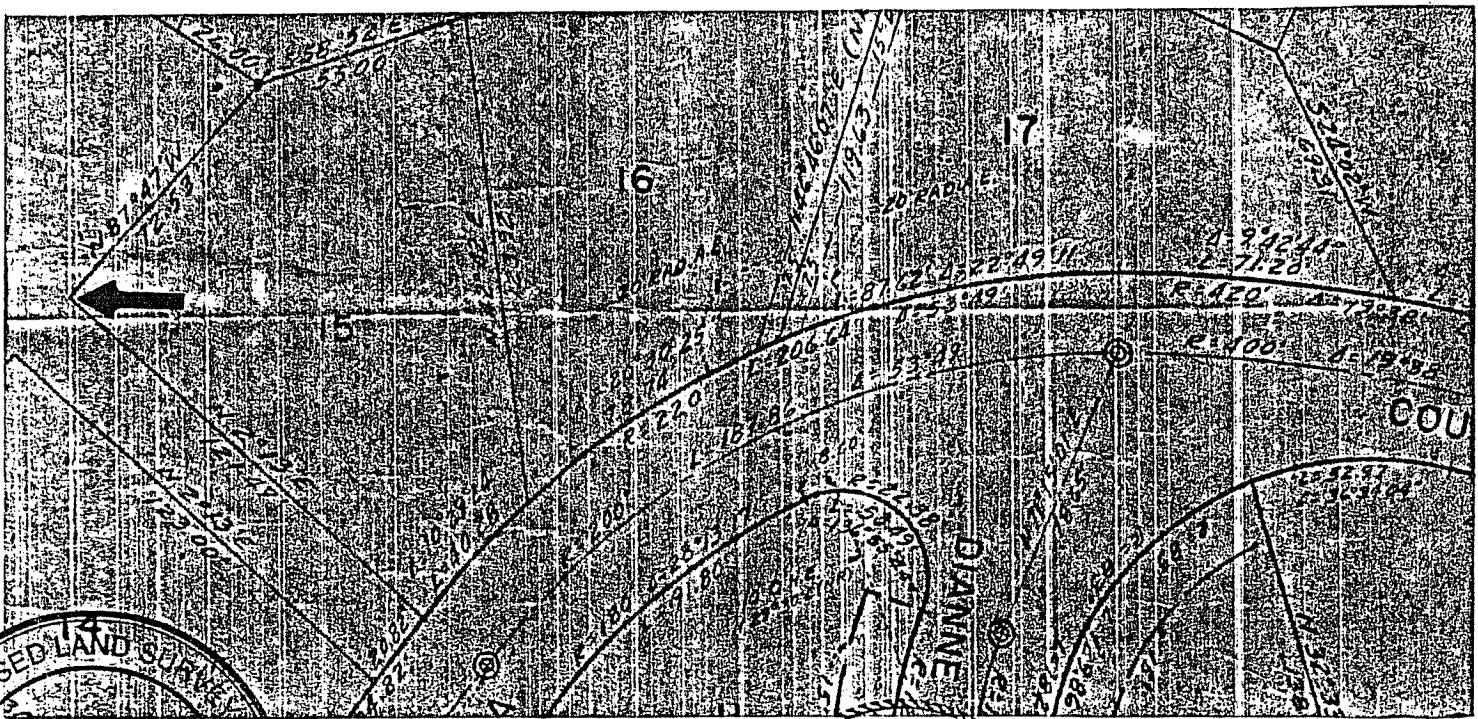
BASED ON FOUND MONUMENTS AS SHOWN ON "MAP OF LA LOMA WOODLANDS"  
FILED IN BOOK 9 OF MAPS AT PAGE 84, MARIN COUNTY RECORDS.

PHYSICAL DESCRIPTION OF MONUMENTS REBUILT OR PERPETUATED

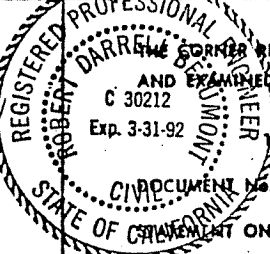
SET 3/4" I.P. WITH PLASTIC CAP, TAG NO. 5814.

CALIFORNIA COORDINATE SYSTEM ORDER: FIRST  SECOND  THIRD   
STATIONS USED: NGS (USC & GS)  STATE  COUNTY  OTHER  STATION \_\_\_\_\_ STATION \_\_\_\_\_  
ZONE \_\_\_\_\_ ELEVATION \_\_\_\_\_ NORTHINGS (Y) \_\_\_\_\_ EASTINGS (X) \_\_\_\_\_

SKETCH: (Include reference tie or witness points, remarks and topo of area)



SURVEYOR'S CERTIFICATE  
THIS CORNER RECORD WAS PREPARED BY ME OR UNDER MY  
DIRECTION IN CONFORMANCE WITH THE LAND SURVEYORS ACT  
SIGNED: William E. Schroeder  
C.E. No. \_\_\_\_\_



COUNTY SURVEYOR'S CERTIFICATE  
THIS CORNER RECORD WAS RECEIVED 1/16 1989  
AND EXAMINED AND FILED 1/16 1989  
BY: RDS  
TITLE: RDS

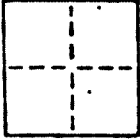
CORNER RECORD

2 of 5

COUNTY OF MARIN T. \_\_\_\_\_ R. \_\_\_\_\_ MERIDIAN CALIFORNIA

CORNER TYPE: GOVT. CORNER  MEANDER  RANCHO  CONTROL  OTHER

CORNER IDENTIFICATION - DATE OF VISIT 12-01 1988.



A.P. # 13-142-10

CORNER - LEFT AS FOUND  FOUND AND TAGGED  REESTABLISHED OBLITERATED CORNER  REBUILT

PHYSICAL DESCRIPTION OF CORNER FOUND; EVIDENCE AND METHOD USED TO IDENTIFY OR REESTABLISH

BASED ON FOUND MONUMENTS AS SHOWN ON "MAP OF LA LOMA WOODLANDS" FILED IN BOOK 9 OF MAPS AT PAGE 84, MARIN COUNTY RECORDS.

PHYSICAL DESCRIPTION OF MONUMENTS REBUILT OR PERPETUATED

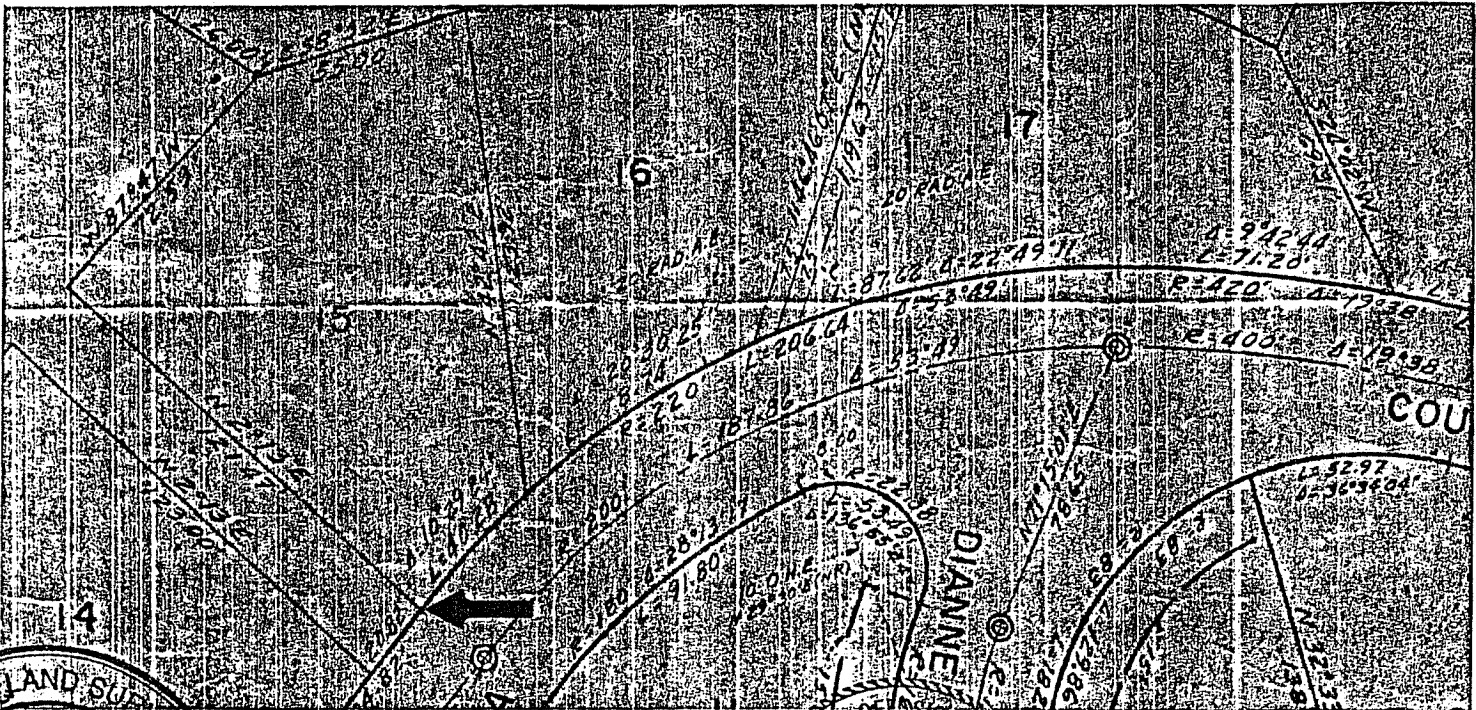
SET 3/4" I.P. WITH PLASTIC CAP, TAG NO. 5814.

CALIFORNIA COORDINATE SYSTEM ORDER: FIRST  SECOND  THIRD

STATIONS USED: NGS (USC & GS)  STATE  COUNTY  OTHER  STATION \_\_\_\_\_ STATION \_\_\_\_\_

ZONE \_\_\_\_\_ ELEVATION \_\_\_\_\_ NORTHINGS (Y) \_\_\_\_\_ EASTINGS (X) \_\_\_\_\_

SKETCH: (Include reference tie or witness points, remarks and topo of area)



SURVEYOR'S CERTIFICATE

THIS CORNER RECORD WAS PREPARED BY ME OR UNDER MY DIRECTION IN CONFORMANCE WITH THE LAND SURVEYORS ACT

ON 11/23 1989

SIGNED William E. Schroeder R.C.E. No. \_\_\_\_\_

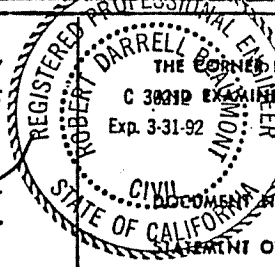
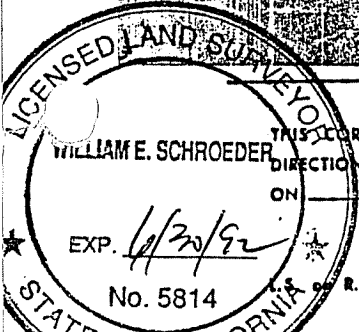
COUNTY SURVEYOR'S CERTIFICATE

THE CORNER RECORD WAS RECEIVED 2/16 1989

C 30312 EXAMINED AND FILED 2/16 1989

Exp. 3-31-92 BY: RDS

TITLE: DES



SEAL

PRINT ON BACK OF SHEET

YES  NO

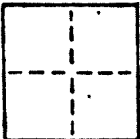
CORNER RECORD

3 of 5

COUNTY OF MARIN T. \_\_\_\_\_ R. \_\_\_\_\_ MERIDIAN \_\_\_\_\_ CALIFORNIA

CORNER TYPE: GOVT. CORNER  MEANDER  RANCHO  CONTROL  OTHER

CORNER IDENTIFICATION — DATE OF VISIT 12-01 1988.



A.P. # 13-142-10

CORNER — LEFT AS FOUND  FOUND AND TAGGED  REESTABLISHED OBLITERATED CORNER  REBUILT

PHYSICAL DESCRIPTION OF CORNER FOUND; EVIDENCE AND METHOD USED TO IDENTIFY OR REESTABLISH

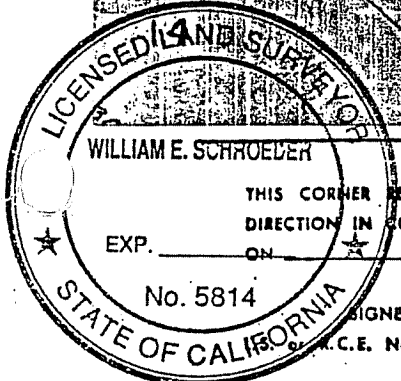
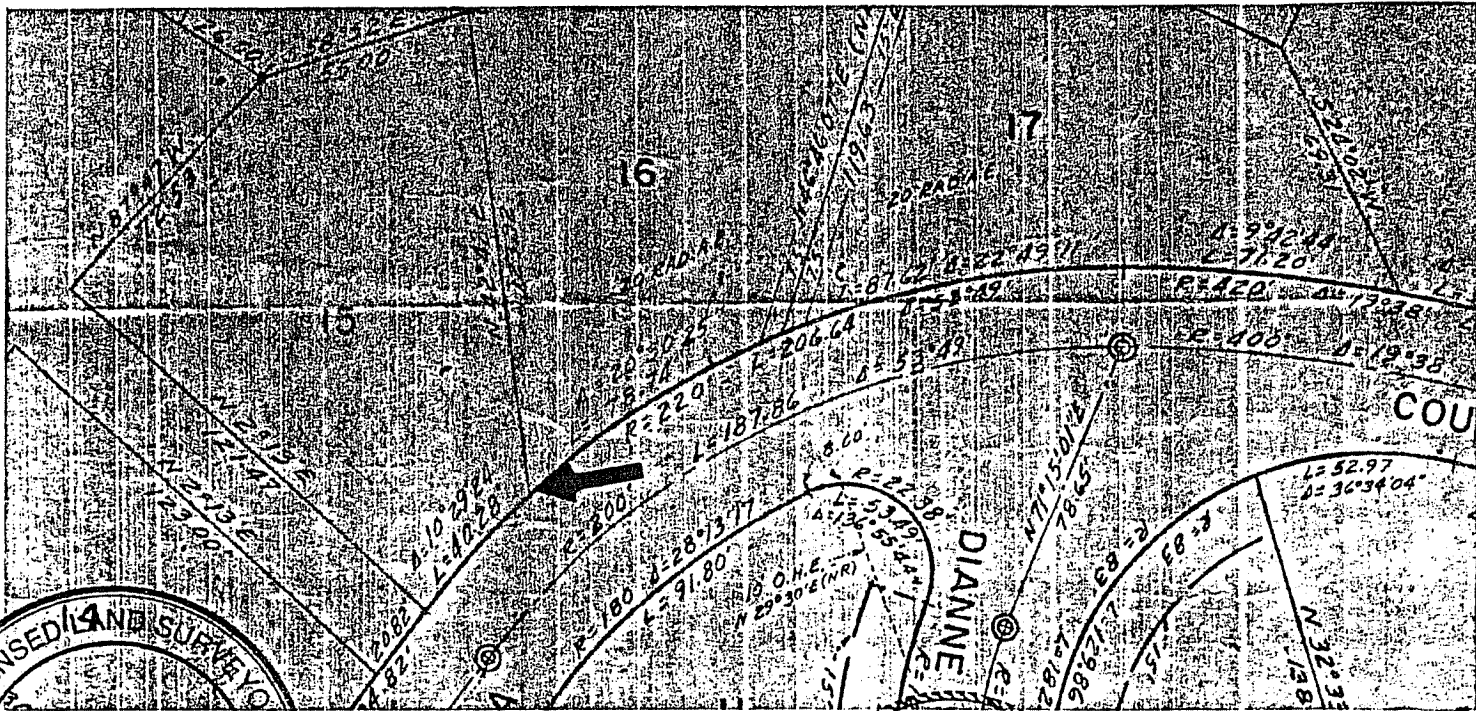
BASED ON FOUND MONUMENTS AS SHOWN ON "MAP OF LA LOMA WOODLANDS" FILED IN BOOK 9 OF MAPS AT PAGE 84, MARIN COUNTY RECORDS.

PHYSICAL DESCRIPTION OF MONUMENTS REBUILT OR PERPETUATED

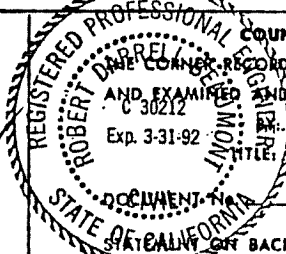
SET 3/4" I.P. WITH PLASTIC CAP, TAG NO. 5814.

CALIFORNIA COORDINATE SYSTEM ORDER: FIRST  SECOND  THIRD   
STATIONS USED: NGS (USC & GS)  STATE  COUNTY  OTHER  STATION \_\_\_\_\_ STATION \_\_\_\_\_  
ZONE \_\_\_\_\_ ELEVATION \_\_\_\_\_ NORTHINGS (Y) \_\_\_\_\_ EASTINGS (X) \_\_\_\_\_

SKETCH: (Include reference tie or witness points, remarks and topo of area)



SURVEYOR'S CERTIFICATE  
THIS CORNER RECORD WAS PREPARED BY ME OR UNDER MY DIRECTION IN CONFORMANCE WITH THE LAND SURVEYORS ACT  
EXP. \_\_\_\_\_ ON \_\_\_\_\_ 1989  
SIGNED: William E. Schroeder  
C.E. No. \_\_\_\_\_



COUNTY SURVEYOR'S CERTIFICATE  
DATE CORNER RECORD WAS RECEIVED 2/16 1989  
AND EXAMINED AND FILED 2/16 1989  
Exp. 3-31-92  
FILED: RDR  
TITLE: DS

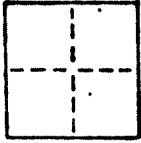
SEAL

YES  NO

CORNER RECORD

4 of 5

COUNTY OF MARIN T. \_\_\_\_\_ R. \_\_\_\_\_ MERIDIAN \_\_\_\_\_ CALIFORNIA  
CORNER TYPE: GOVT. CORNER  MEANDER  RANCHO  CONTROL  OTHER   
CORNER IDENTIFICATION - DATE OF VISIT 12-01 1988



A.P. # 13-142-10

CORNER - LEFT AS FOUND  FOUND AND TAGGED  REESTABLISHED OBLITERATED CORNER  REBUILT   
PHYSICAL DESCRIPTION OF CORNER FOUND, EVIDENCE AND METHOD USED TO IDENTIFY OR REESTABLISH

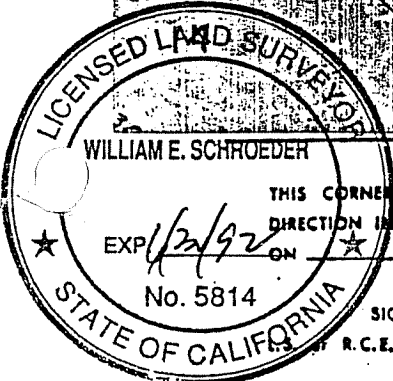
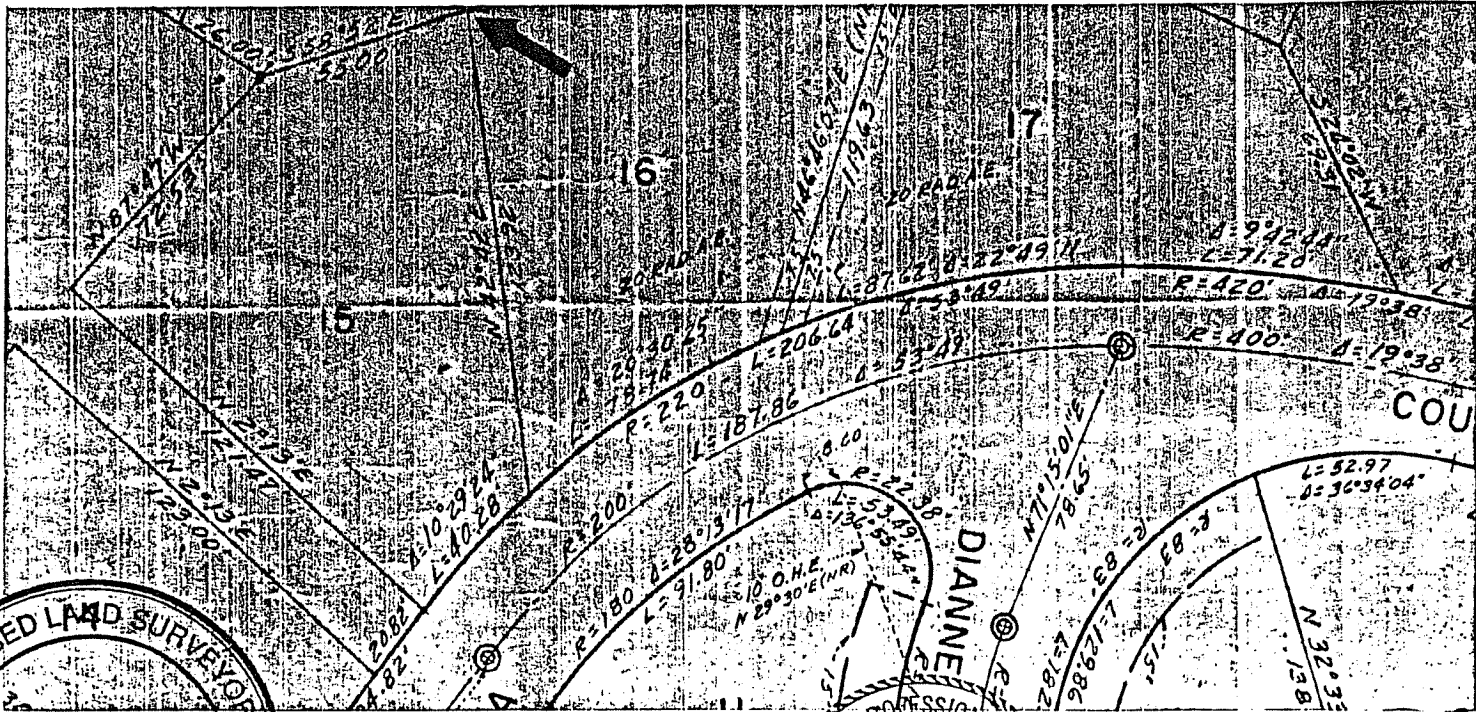
BASED ON FOUND MONUMENTS AS SHOWN ON "MAP OF LA LOMA WOODLANDS"  
FILED IN BOOK 9 OF MAPS AT PAGE 84, MARIN COUNTY RECORDS.

PHYSICAL DESCRIPTION OF MONUMENTS REBUILT OR PERPETUATED

SET 3/4" I.P. WITH PLASTIC CAP, TAG NO. <sup>LS</sup> 5814.

CALIFORNIA COORDINATE SYSTEM ORDER: FIRST  SECOND  THIRD   
STATIONS USED: NGS (USC & GS)  STATE  COUNTY  OTHER  STATION \_\_\_\_\_ STATION \_\_\_\_\_  
ZONE \_\_\_\_\_ ELEVATION \_\_\_\_\_ NORTHINGS (Y) \_\_\_\_\_ EASTINGS (X) \_\_\_\_\_

SKETCH: (Include reference tie or witness points, remarks and topo of area)



SURVEYOR'S CERTIFICATE  
THIS CORNER RECORD WAS PREPARED BY ME OR UNDER MY DIRECTION IN CONFORMANCE WITH THE LAND SURVEYORS ACT  
ON 12-01 1988  
SIGNED William E. Schroeder  
R.C.E. No. \_\_\_\_\_

COUNTY SURVEYOR'S CERTIFICATE  
THE CORNER RECORD WAS RECEIVED 2/16 1989  
CAREFULLY EXAMINED AND FILED 2/16 1989  
Exp. 3-31-92  
By: RDB  
TITLE: PCS

SEAL

YES  NO



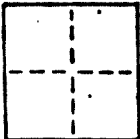
# CORNER RECORD

5 of 5

COUNTY OF MARIN T. \_\_\_\_\_ R. \_\_\_\_\_ MERIDIAN \_\_\_\_\_ CALIFORNIA

CORNER TYPE: GOVT. CORNER  MEANDER  RANCHO  CONTROL  OTHER

CORNER IDENTIFICATION — DATE OF VISIT 12-01 1988



A.P. # 13-142-10

CORNER — LEFT AS FOUND  FOUND AND TAGGED  REESTABLISHED OBLITERATED CORNER  REBUILT

PHYSICAL DESCRIPTION OF CORNER FOUND; EVIDENCE AND METHOD USED TO IDENTIFY OR REESTABLISH

BASED ON FOUND MONUMENTS AS SHOWN ON "MAP OF LA LOMA WOODLANDS" FILED IN BOOK 9 OF MAPS AT PAGE 84, MARIN COUNTY RECORDS.

PHYSICAL DESCRIPTION OF MONUMENTS REBUILT OR PERPETUATED

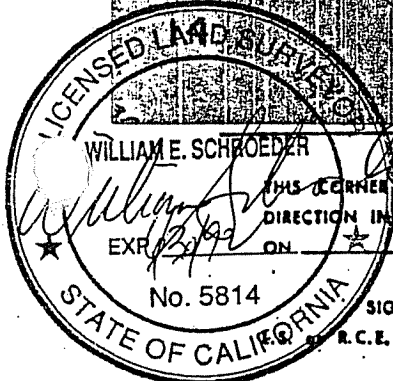
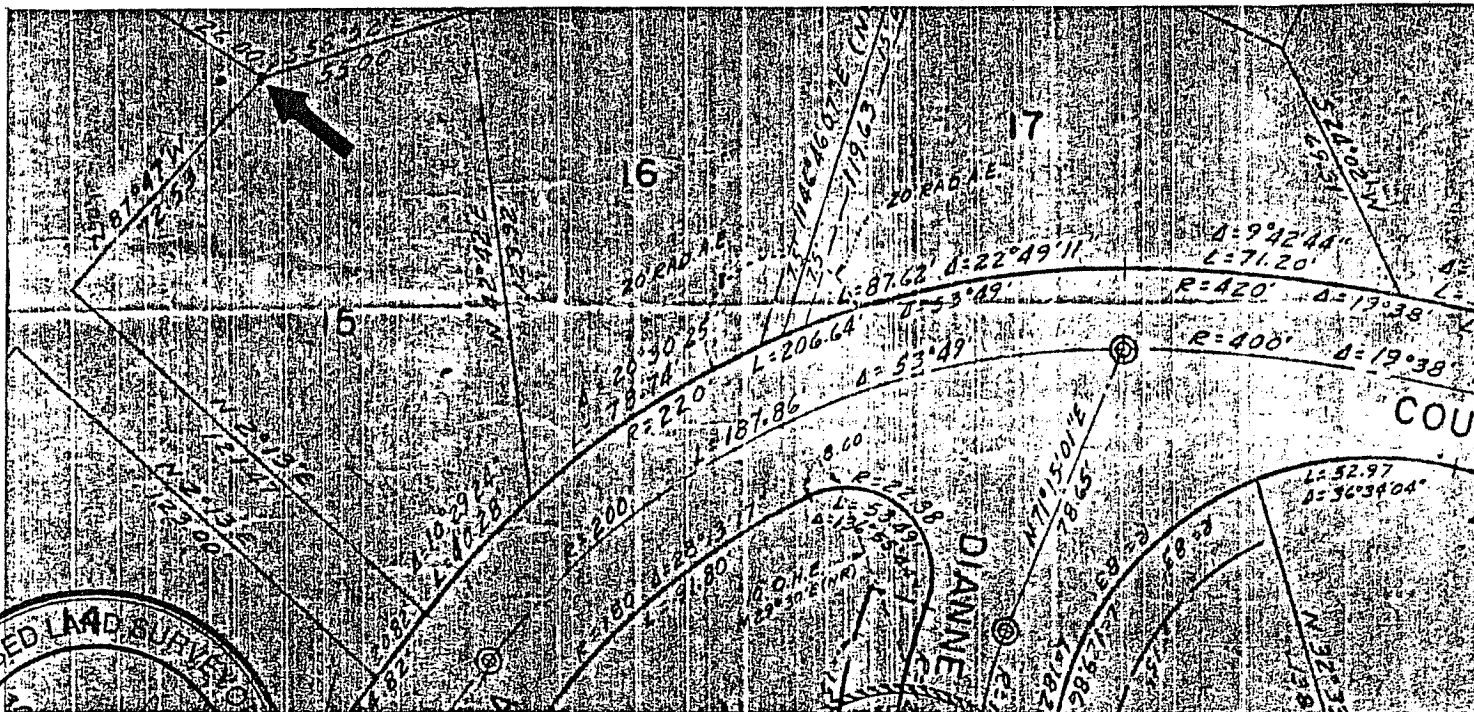
SET 3/4" I.P. WITH PLASTIC CAP, TAG NO. 5814.

CALIFORNIA COORDINATE SYSTEM ORDER: FIRST  SECOND  THIRD

STATIONS USED: NGS (USC & GS)  STATE  COUNTY  OTHER  STATION \_\_\_\_\_ STATION \_\_\_\_\_

ZONE \_\_\_\_\_ ELEVATION \_\_\_\_\_ NORTHINGS (Y) \_\_\_\_\_ EASTINGS (X) \_\_\_\_\_

SKETCH: (Include reference file or witness points, remarks and topo of area)



**SURVEYOR'S CERTIFICATE**  
 THIS CORNER RECORD WAS PREPARED BY ME OR UNDER MY DIRECTION IN CONFORMANCE WITH THE LAND SURVEYORS ACT.  
 EXP. 12/31 ON 11/23 1989  
 SIGNED: \_\_\_\_\_  
 R.C.E. No.: \_\_\_\_\_

**COUNTY SURVEYOR'S CERTIFICATE**  
 THE CORNER RECORD WAS RECEIVED 2/16 1989  
 AND EXAMINED AND FILED 2/16 1989  
 BY: RDB  
 TITLE: DCS  
 CIVIL DOCUMENT No. \_\_\_\_\_  
 STATE OF CALIFORNIA