

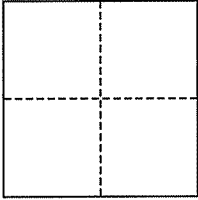
CORNER RECORD

City of San Rafael

Document Number AP# 013-137-03

County of Marin, California

Brief Legal Description Westerly Parcel of the Lands of Takashina, DN 2010-019755 per 2005 RS 50



CORNER TYPE

Government Corner Control
Meander Property
Rancho Other
Date of Survey November 7, 2011

COORDINATES (Optional)

N. _____
E. _____
Zone _____ NAD27 NAD83
NAD83 Epoch _____
Elev. _____
Vert. Datum: NGVD29 NAVD88
Meas. Units: Metric Imperial

Corner- Left as found Found and tagged Established Reestablished Rebuilt

Identification and type of corner found: Evidence used to identify or procedure used to establish or reestablish the corner:
Found Iron Pipe & Plug, LS 3775 and RCE 30465, per 2005 RS 50.

A description of the physical condition of the monument as found and as set or reset: Set Rebar&Cap, Iron Pipe&Plug, Nail&tag and Hub & Tack as shown herein.

SURVEYOR'S STATEMENT

This corner Record was prepared by me or under my direction in conformance with
the Land Surveyor's Act on November 7, 2011

Signed *Jay L. H.* P.L.S. or R.C.E. No. 30465



COUNTY SURVEYOR'S STATEMENT

This Corner Record was received NOVEMBER 14, 2011
and examined and filed DECEMBER 22, 2011

Signed *[Signature]* P.L.S. or R.C.E. No. 7128

Title COUNTY SURVEYOR



County Surveyor's Comment _____

Lands of Amacker
DN 2007-048433
AP#013-133-21

Basis of Bearings for this survey is the same as for the Survey that it is based, 2005 RS 50; the shown Basis is an 'Equivalent Local Basis of Bearing'

Lands of Ruiz
DN 2010-044840
AP#013-133-04

Fd. LS 3775, per 2005 RS 50

Fd. RCE 30465, per 2005 RS 50

PERRY WALK
BASIS of BEARING

Fd. RCE 30465, per 2005 RS 50

Fd. RCE 30465, per 2005 RS 50

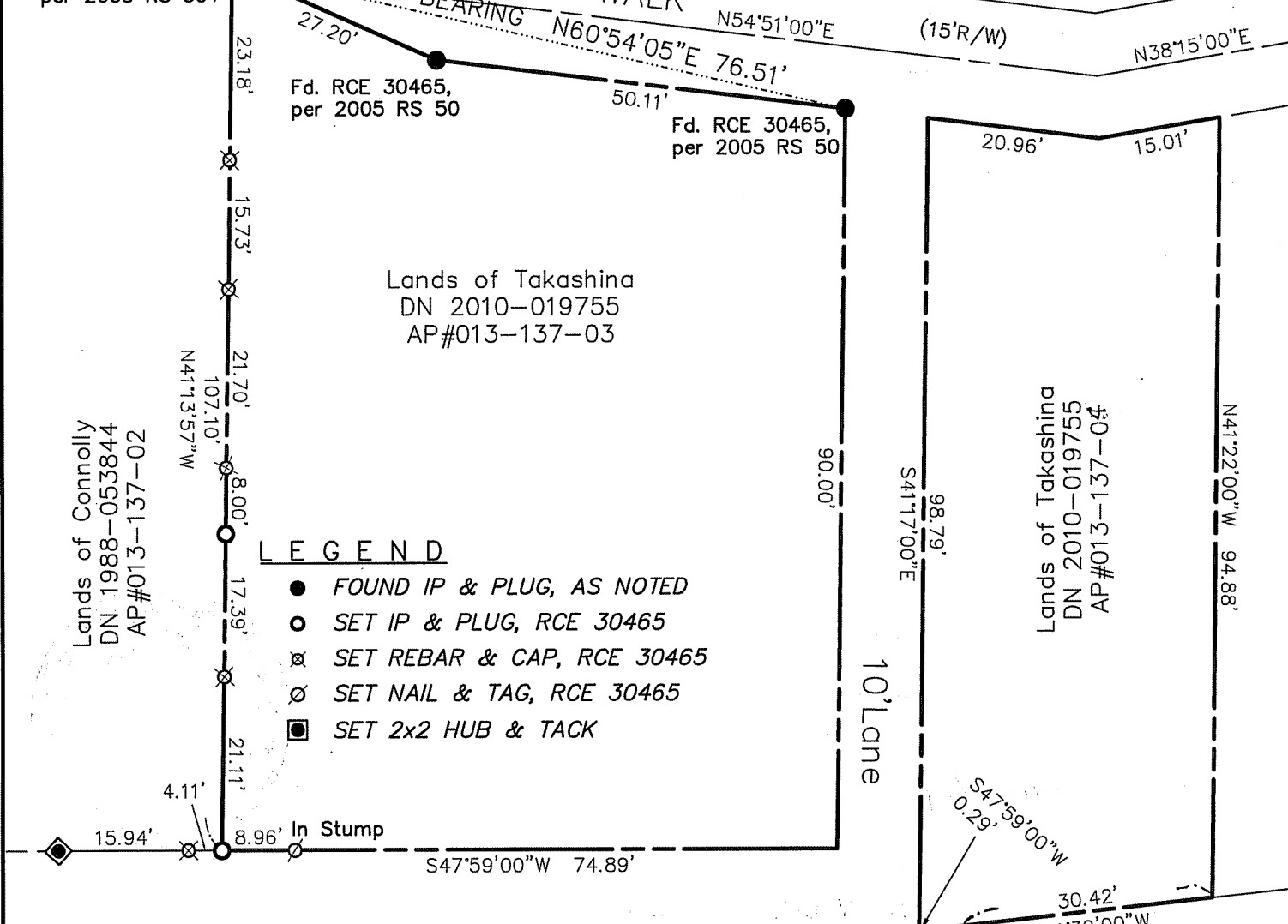
Lands of Takashina
DN 2010-019755
AP#013-137-03

Lands of Connolly
DN 1988-053844
AP#013-137-02

Lands of Takashina
DN 2010-019755
AP#013-137-04

LEGEND

- FOUND IP & PLUG, AS NOTED
- SET IP & PLUG, RCE 30465
- ⊗ SET REBAR & CAP, RCE 30465
- ∅ SET NAIL & TAG, RCE 30465
- SET 2x2 HUB & TACK

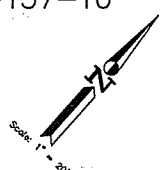


Lands of Lear/TR & Kop
DN 2010-022579
AP#013-137-12

Lands of Gallagher
DN 1994-041039
AP#013-137-11

Lands of Moezzi & Price
DN 2007-061365
AP#013-137-10

Note: All distances are in feet and decimals thereof.



SHEET	1	OF	1
SCALE:	1" = 20'	DESIGN:	PR
DATE:	Nov 2011	DRAWN:	PR
FILE:	2011-095	CHECKED:	J.L.H
2011-095\DWG\11-095-BASE,COR-REC			

J.L. ENGINEERING
CIVIL ENGINEERS-LAND SURVEYORS
1539 4th ST., SAN RAFAEL, CA. 94901 (415) 457-6647

Corner Record

Lands of Takashina - 17 Perry Walk
APN 013-137-03, San Rafael, Marin County, CA