

CORNER RECORD

Document Number A.P.N. 013-133-04 & 013-133-03

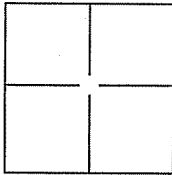
City of San Rafael

County of Marin, California

Brief Legal Description Lands of Naydenov, 37 Perry Walk, D.N. 2006-0042243, Lands of Begley, 12 Perry Walk, D.N. 2006-0046823

CORNER TYPE

COORDINATES(Optional)



Government Corner Control
 Meander Property
 Rancho Other

Date of Survey 10 February 2009

N. _____
 E. _____
 Zone _____ NAD27 NAD83
 NAD83 Epoch _____
 Elev. _____
 Vert. Datum: NGVD29 NADV88
 Meas. Units: Metric Imperial

Corner - Left as found Found and tagged Established Reestablished Rebuilt

Identification and type of corner found: Evidence used to identify or procedure used to establish or reestablish the corner:

Found 3/4" Iron Pipe and Yellow Cap L.S. 3775 (Southern Most Corner of D.N. 2006-0042243),
Found 3/4" Iron Pipe and Yellow Cap L.S. 4794 (Southeast corner of APN:013-133-01)

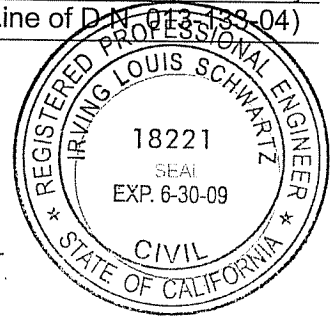
A description of the physical condition of the monument as found and as set or reset:

Set 3/4" Iron Pipe and Yellow Cap R.C.E. 18221 (1 at Northern Most Corner of D.N. 2006-0042243),
Set Brass Nail and Tag R.C.E. 18221 (1 at Eastern Most Corner of D.N. 013-133-04, (1 Along
Northwesterly Line of D.N. 2006-0042243), Set Scribed '+' in Concrete Steps(1 Along Northeasterly
Line of D.N. 2006-0042243), Set Wooden Ginney (3 Along Northeasterly Line of D.N. 013-133-04)

SURVEYOR'S STATEMENT

This Corner Record was prepared by me or under my direction in conformance with the Land Surveyor's Act on February 12, 2009

Signed [Signature] P.L.S. or R.C.E. No.: 18221



COUNTY SURVEYOR'S STATEMENT

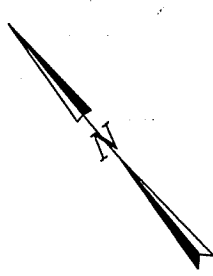
This Corner Record was received FEBRUARY 18, 2009 and examined and filed MARCH 23, 2009

Signed [Signature] P.L.S. or R.C.E. No.: 7128

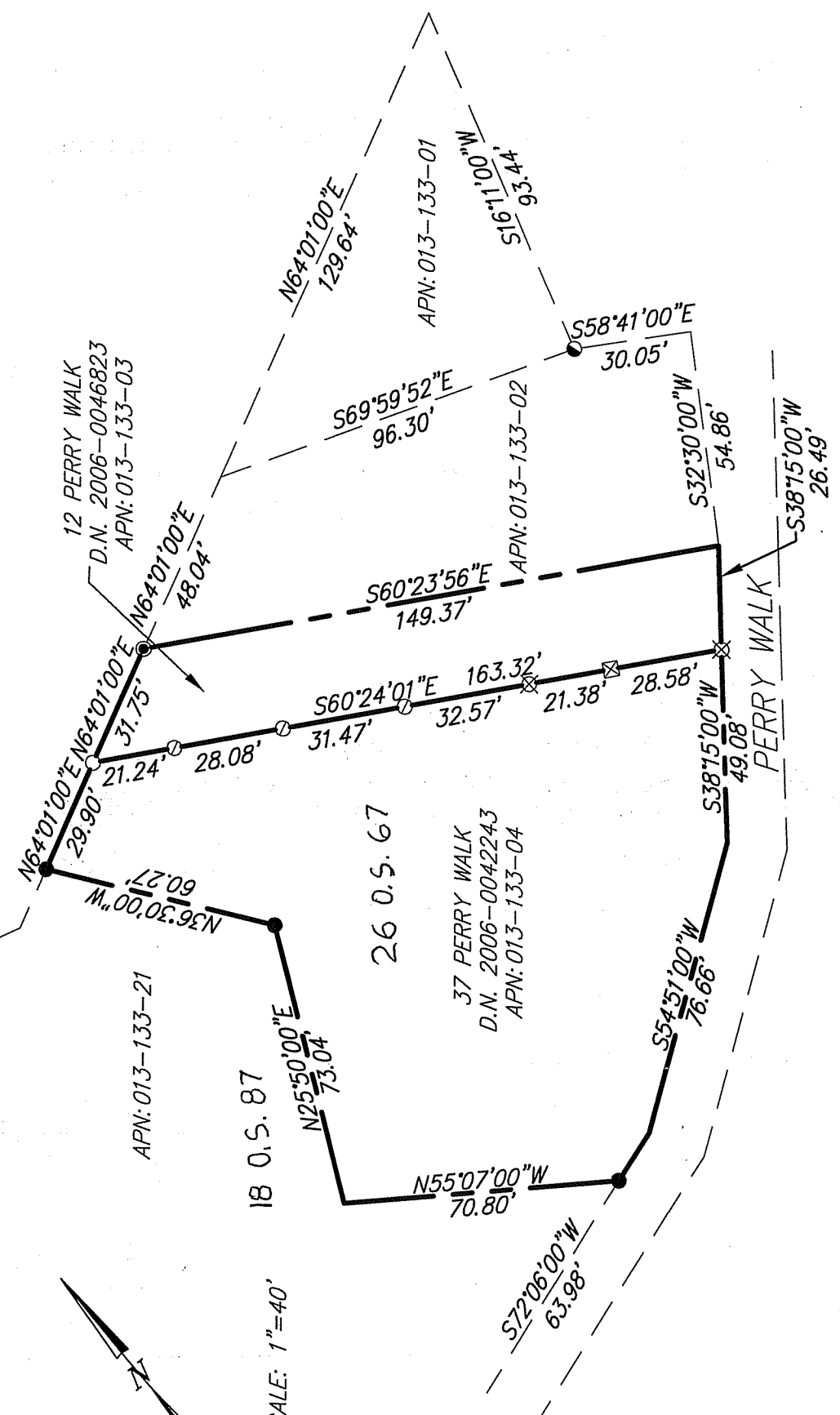
Title COUNTY SURVEYOR

County Surveyor's Comment _____





SCALE: 1"=40'



- LEGEND**
- SET 3/4" IRON PIPE & YELLOW CAP "R.C.E. 18221"
 - ⊗ SET BRASS NAIL AND TAG "R.C.E. 18221"
 - ⊙ SET WOODEN GINNEY - POINT ON PROPERTY LINE
 - ⊕ SCRIBED '4' IN CONC STEPS
 - FOUND 3/4" IRON PIPE & YELLOW CAP "I.S. 3775" - PER 18 OS 87
 - FOUND 3/4" IRON PIPE & YELLOW CAP "I.S. 4794" - PER 26 OS 67
 - FOUND 3/4" IRON PIPE - OPEN - NO TAG - PER 26 OS 67

NOTE:
ALL DIMENSIONS AND BEARINGS SHOWN
HEREON ARE PER 26 O.S. 67

EXHIBIT "A"



ILS ASSOCIATES, INC.®
CIVIL ENGINEERING AND LAND SURVEYING

70 GALLI DRIVE SUITE A NOVATO, CA 94946-5777 (415) 885-8200 FAX (415) 885-2783

A.P.N. 013-133-04 & 013-133-03

DATE: 02/12/2009
FILE: N:\P8000\8340\8340T.dwg\8340CR.dwg