

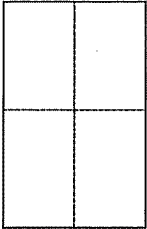
CORNER RECORD

Document Number APN 013-132-01

City of San Rafael

County of Marin, California

Brief Legal Description Portion of Lot 6 Picnic Valley Tract, Book 20 O.S. Page 14,
Marin County Records



CORNER TYPE

Government Corner Control
Meander Property
Rancho Other
Date of Survey _____

COORDINATES (Optional)

N. _____
E. _____
Zone _____ NAD27 NAD83
NAD83 Epoch _____
Elev. _____
Vert. Datum: NGVD29 NAVD88
Meas. Units: Metric Imperial

Corner - Left as found Found and tagged Established Reestablished Rebuilt

Identification and type of corner found: Evidence used to identify or procedure used to establish or reestablish the corner:

Southwest corner re-established from found monuments on Easterly R/W line
Southern Heights Blvd. per Record of Survey 20 O. S. 14, MCR

A description of the physical condition of the monument as found and as set or reset: _____

Set 1/2" rebar LS 7237 (original corner searched for not found)

SURVEYOR'S STATEMENT

This Corner Record was prepared by me or under my direction in conformance with
the Land Surveyor's Act on Sept. 3, 2010

Signed Michael E. Ford P.L.S. or R.C.E. No. 7237



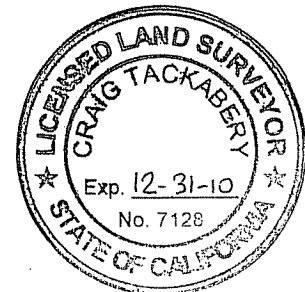
COUNTY SURVEYOR'S STATEMENT

This Corner Record was received October 4, 2010

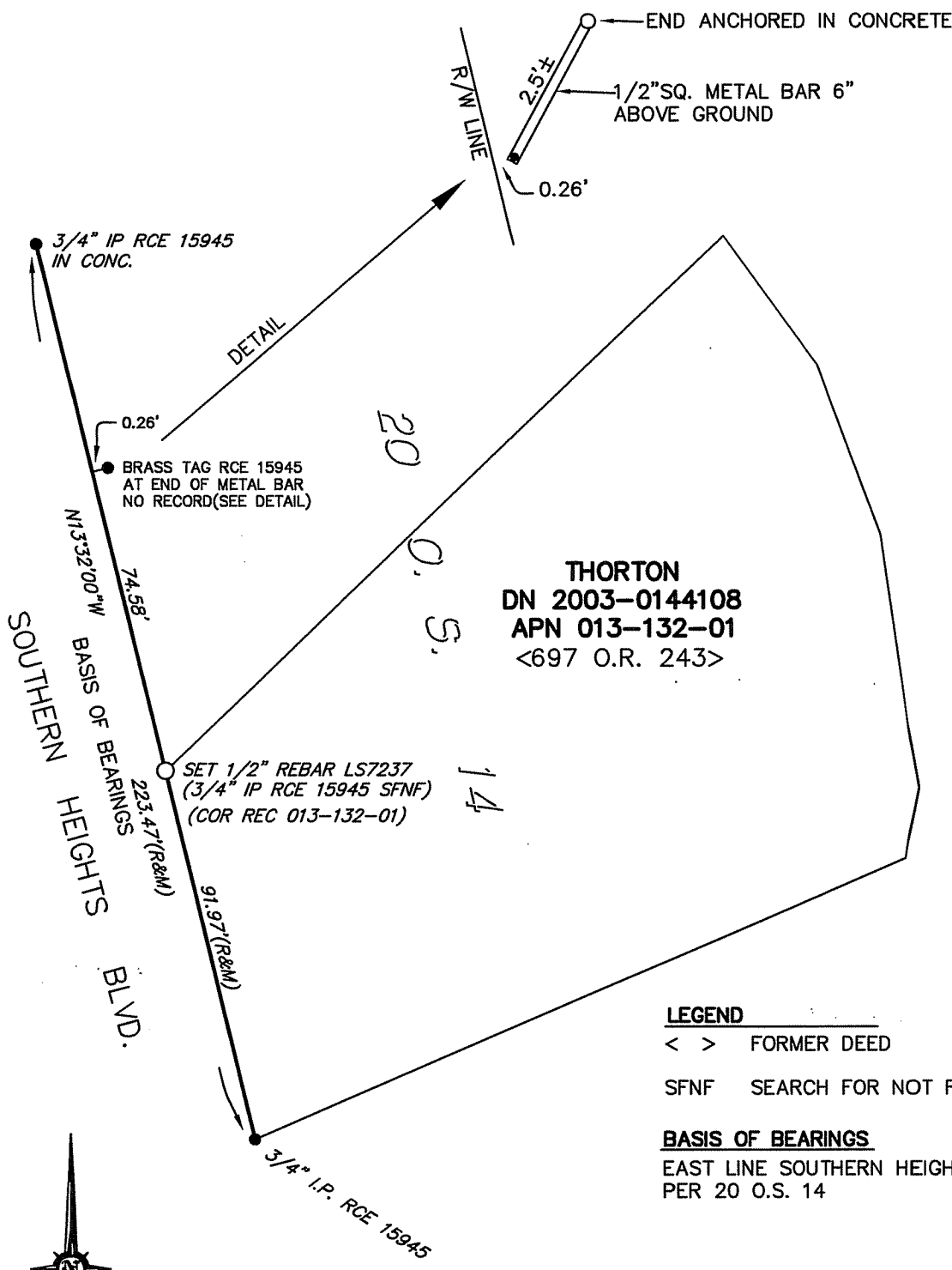
and examined and filed October 7, 2010

Signed _____ P.L.S. or R.C.E. No. 7128

Title COUNTY SURVEYOR



County Surveyor's Comment



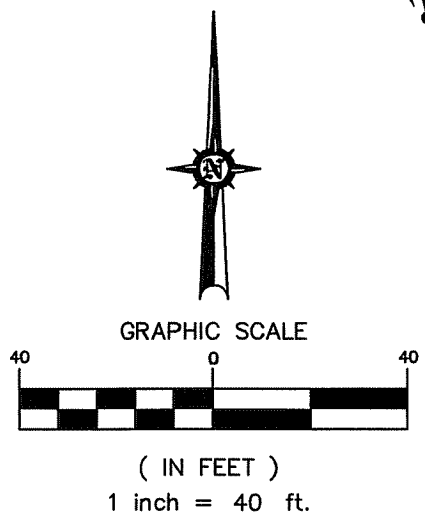
THORTON
 DN 2003-0144108
 APN 013-132-01
 <697 O.R. 243>

LEGEND

- < > FORMER DEED
- SFNF SEARCH FOR NOT FOUND

BASIS OF BEARINGS

EAST LINE SOUTHERN HEIGHTS BLVD
 PER 20 O.S. 14



PORTION OF LOT 6 PICNIC VALLEY TRACT
 PER RECORD OF SURVEY 20 O.S. 14
 MARIN COUNTY RECORDS



2300 bethards Drive, suite J
 santa rosa, california 95405
 p 707.542-8513 - f 707.542-1825
 www.michaelfordinc.com

JOB #101961

DATE: 9/7/2010