

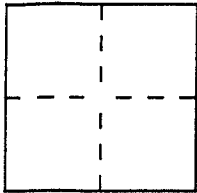
CORNER RECORD

Document Number APN 013-114-36

City of SAN RAFAEL

County of MARIN, California

Brief Legal Description PARCEL 2 PER 25 PM 93



CORNER TYPE

COORDINATES  
(Optional)

Government Corner  Control   
Meander  Property   
Rancho  Other   
Date of Survey 9-14-05

N. \_\_\_\_\_  
E. \_\_\_\_\_  
Zone \_\_\_\_\_ Datum \_\_\_\_\_  
Elev. \_\_\_\_\_

Corner — Left as found  Found and tagged  Established  Reestablished  Rebuilt

Identification and type of corner found: Evidence used to identify or procedure used to establish or reestablish the corner:

SEE SHEET 2

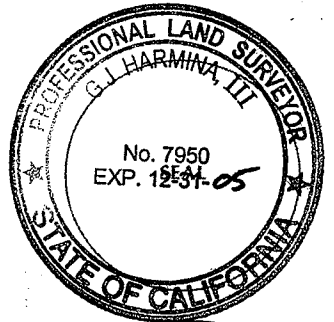
A description of the physical condition of the monument as found and as set or reset: \_\_\_\_\_

SEE SHEET 2

SURVEYOR'S STATEMENT

This Corner Record was prepared by me or under my direction in conformance with the Land Surveyors' Act on SEPT 15 2005.

Signed [Signature] L.S. or R.C.E. Number 7950



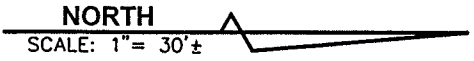
COUNTY SURVEYOR'S STATEMENT

This Corner Record was received SEPTEMBER 19, 2005 and examined and filed OCTOBER 12, 2005.

Signed [Signature] Title COUNTY SURVEYOR



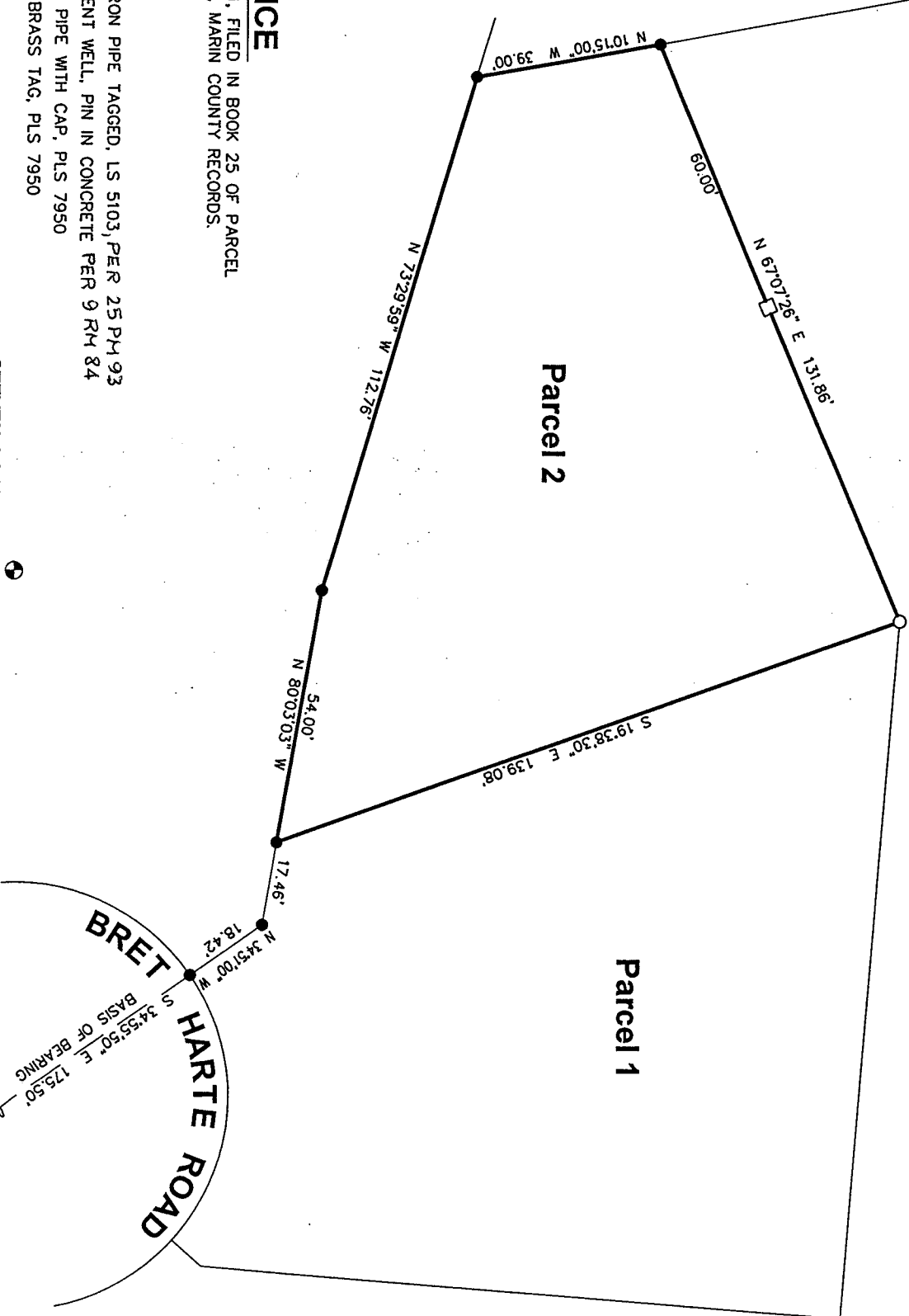
County Surveyor's Comment \_\_\_\_\_



Parcel 3  
25 PM 93

Parcel 2

Parcel 1



**REFERENCE**  
PARCEL MAP S95-1, FILED IN BOOK 25 OF PARCEL MAPS, AT PAGE 93, MARIN COUNTY RECORDS.

- LEGEND**
- FOUND 3/4" IRON PIPE TAGGED, LS 5103, PER 25 PM 93
  - ⊙ FOUND MONUMENT WELL, PIN IN CONCRETE PER 9 RM 84
  - SET 1/2" IRON PIPE WITH CAP, PLS 7950
  - SET 2x2 HUB. BRASS TAG, PLS 7950

- NOTES**
1. RECORD=MEASURED
  2. NO EASEMENT SHOWN

STEVEN J. LAFRANCHI & ASSOCIATES, INC.  
CIVIL ENGINEERS - LAND SURVEYORS

Petaluma Marina Business Center  
775 Baywood Drive, Suite 312  
Petaluma, California 94954  
(707) 762-3122 FAX (707) 762-3239

