

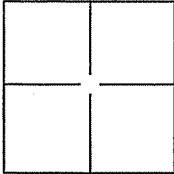
CORNER RECORD

Document Number APN 013-111-08 & 09

City of San Rafael

County of Marin, California

Brief Legal Description Lot 1 & Lot 2, 240 & 236 Woodland Avenue, 2001 PM 195.



CORNER TYPE

Government Corner Control
 Meander Property
 Rancho Other

Date of Survey 26 June 2007

COORDINATES(Optional)

N. _____
 E. _____
 Zone _____ NAD27 NAD83
 NAD83 Epoch _____
 Elev. _____
 Vert. Datum: NGVD29 NADV88
 Meas. Units: Metric Imperial

Corner - Left as found Found and tagged Established Reestablished Rebuilt

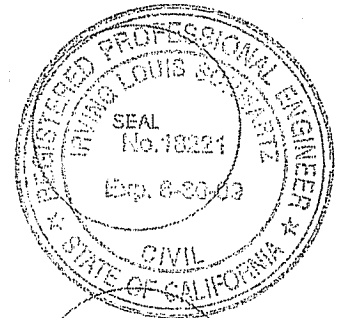
Identification and type of corner found: Evidence used to identify or procedure used to establish or reestablish the corner:
2001 Maps 195.

A description of the physical condition of the monument as found and as set or reset: _____
Set 3/4" Iron Pipe at northwest corner and northerly line (4), Set Brass Nail and Tag in fence
at northeast and southwest corner (2), Set Brass Nail and Tag in Lead at southeast corner (1),
Set Lead and Tag in Concrete at southerly line (1), Set Ginney Points on easterly property line (2),
Set Mag Nail and Washer on easterly property line (1), See Exhibit A.

SURVEYOR'S STATEMENT

This Corner Record was prepared by me or under my direction in conformance with
 the Land Surveyor's Act on JUNE 29, 2007.

Signed [Signature] P.L.S. or R.C.E. No.: 18221



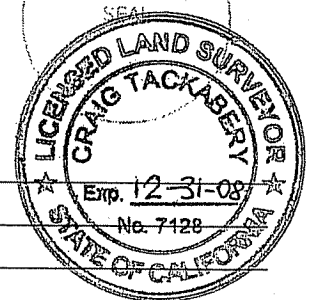
COUNTY SURVEYOR'S STATEMENT

This Corner Record was received JULY 5, 2007 and examined
 and filed AUGUST 13, 2007

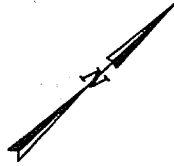
Signed [Signature] P.L.S. or R.C.E. No.: 7128

Title COUNTY SURVEYOR

County Surveyor's Comment _____



1" = 40'



WOODLAND AVENUE 60' R/W

N47°01'00"W

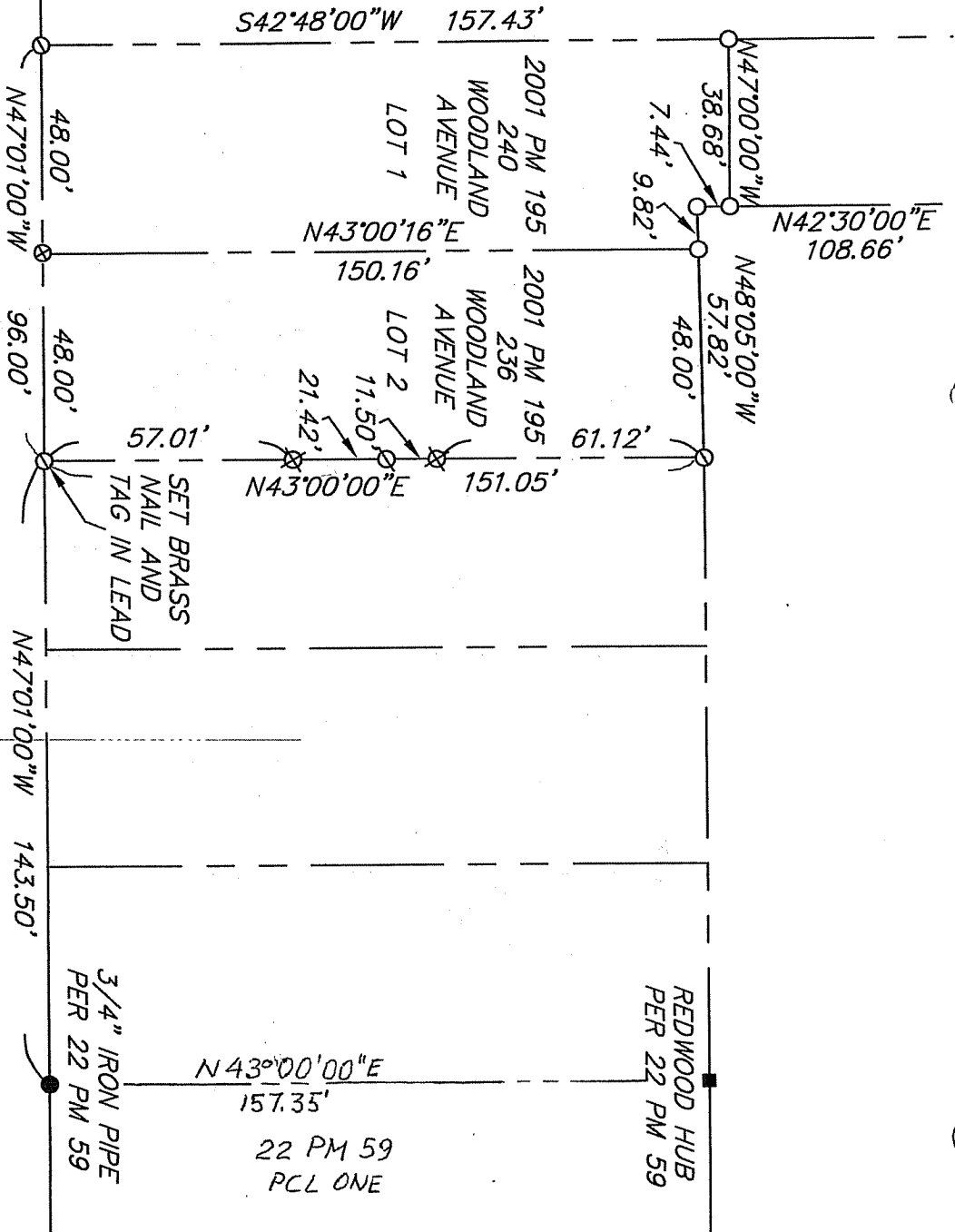
BASIS OF BEARINGS

LEGEND

- SET 3/4" IRON PIPE & YELLOW CAP R.C.E. 18221"
- ⊙ SET BRASS NAIL AND TAG R.C.E. 18221" IN FENCE EXCEPT AS NOTED.
- ⊗ SET MAG NAIL AND WASHER - POINT ON PROPERTY LINE
- ⊗ SET GIMNEY - POINT ON PROPERTY LINE
- ⊗ SET LEAD AND TAG IN CONCRETE
- 3/4" IRON PIPE PER 22 PM 59
- REDWOOD HUB PER 22 PM 59

NOTE:

ALL DIMENSIONS AND BEARINGS SHOWN HEREON ARE PER 2001 PM 195.



22 PM 59
PCL ONE

DATE: 8/6/2007
FILE NUMBER: 000016126
DRAWN BY: VADJ/BJD/CR/DAW
PAGE 2 OF 2

A.P.N. 019-111-08
A.P.N. 019-111-09

EXHIBIT "A"



ILS ASSOCIATES, INC.
CIVIL ENGINEERING AND LAND SURVEYING

79 GULLBERRY SUITE A NOVATO, CA 94948-0717 (415)993-6900 FAX (415)993-8719