

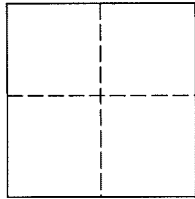
L. A. Stevens & Associates, Inc.
Professional Land Surveyors
Novato, California

Lands of 1115 Second Street LLC
Job #: 12-1431

CORNER RECORD Document Numbers 013-011-06

City of San Rafael, County of Marin, California

Brief Legal Description: Being the southerly line of that certain deed recorded in Document Number 2012-50021 of Official Records shown as the southerly line of that certain deed recorded in Document Number 2007-44456 of Official Records per 2007 ROS 202.



CORNER TYPE

COORDINATES (Optional)

Government Corner Control
Meander Property
Rancho Other
Date of Survey December 12, 2012

N _____
E _____
Zone _____ NAD27 NAD83
NAD 83 Epoch _____
Elev. _____
Vert. Datum: NGVD29 NAVD88
Meas. Units: Metric Imperial

Corner - Left as found Found and tagged Established Reestablished Rebuilt

Identification and type of corner found: Evidence used to identify or procedure used to establish or reestablish the corner:
See Page 2 of 2.

A description of the physical condition of the monument as found and as set or reset:
See Page 2 of 2.

SURVEYOR'S STATEMENT

This Corner Record was prepared by me or under my direction in conformance with

The Land Surveyor's Act on February 26, 2013.


Signed  P.L.S. 6649



COUNTY SURVEYOR'S STATEMENT

This Corner Record was received MARCH 4, 2013

and examined and filed APRIL 17, 2013

Signed  P.L.S. or R.C.E. No. 7821

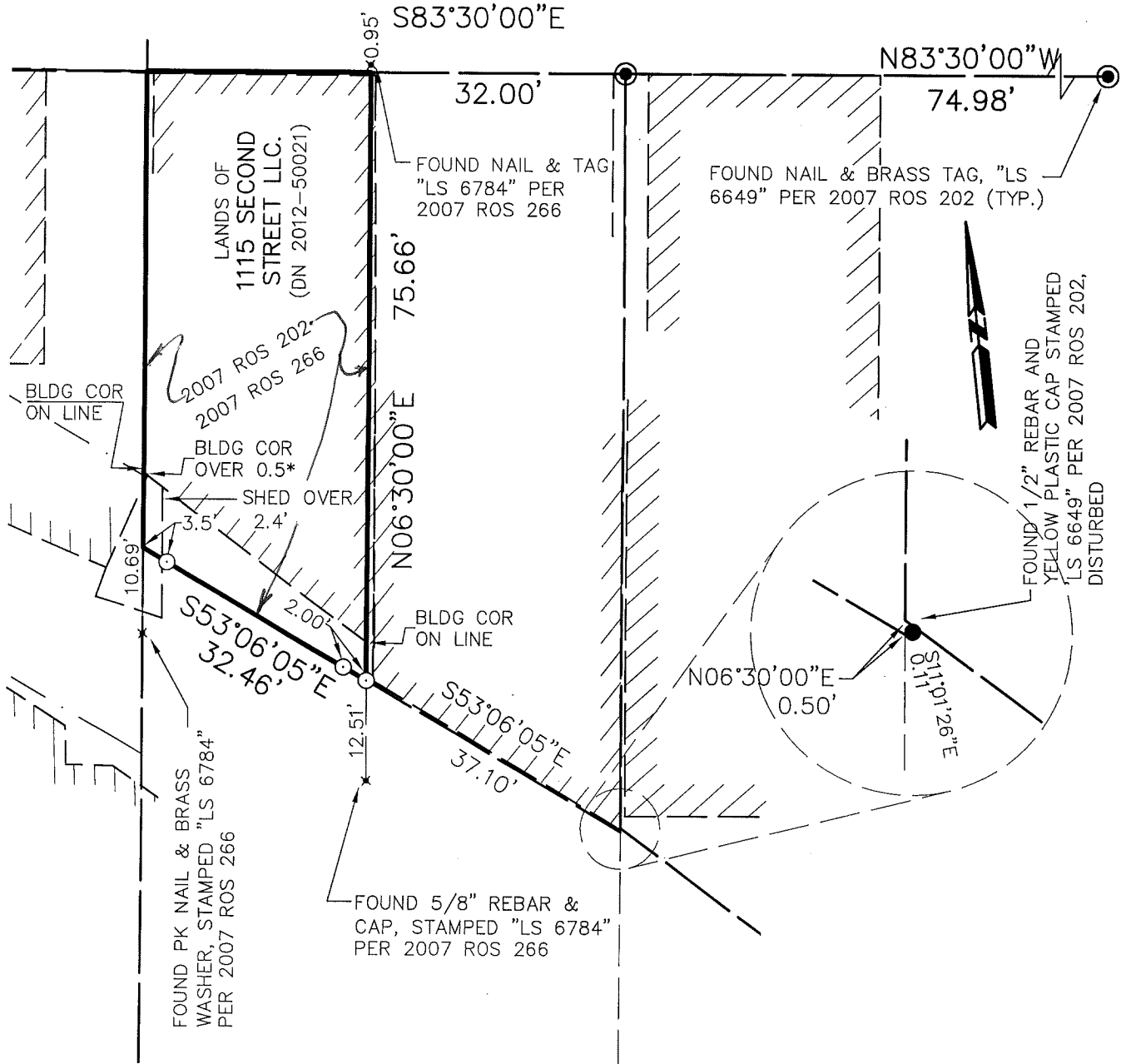
Title DEPUTY COUNTY SURVEYOR



County Surveyors' Comment _____

All distances shown are in feet and decimals thereof

Second Street



Lawrence A. Stevens, PLS 6649

Copyright © Lawrence A. Stevens 2013

Corner Record

Lands of 1115 Second Street LLC

(Southerly line of DN 2012-50021 per 2007 ROS 202)

San Rafael Marin County California

Scale: 1" = 20'

December 2012

L.A. Stevens & Associates, Inc.

Professional Land Surveyors * (415) 382-7713
7 Commercial Blvd., Suite 1 * Novato, CA 94949

Job # 121431fld

Page 2 Of 2