

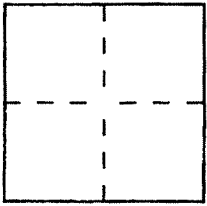
# CORNER RECORD

Document Number APN 012-330-09

City of SAN RAFAEL

County of MARIN, California

Brief Legal Description LOT 44 OF VOL 19 OF MAPS, PAGE 13



### CORNER TYPE

- Government Corner
- Meander
- Rancho
- Date of Survey \_\_\_\_\_
- Control
- Property
- Other

### COORDINATES (Optional)

N. \_\_\_\_\_  
 E. \_\_\_\_\_  
 Zone \_\_\_\_\_ Datum \_\_\_\_\_  
 Elev. \_\_\_\_\_

Corner — Left as found  Found and tagged  Established  Reestablished  Rebuilt

Identification and type of corner found: Evidence used to identify or procedure used to establish or reestablish the corner:

SEE PAGE 2

A description of the physical condition of the monument as found and as set or reset:

SEE PAGE 2

### SURVEYOR'S STATEMENT

This Corner Record was prepared by me or under my direction in conformance with the Land Surveyors' Act on 7/12/2000 1900.

Signed [Signature] L.S. or R.C.E. Number 6784



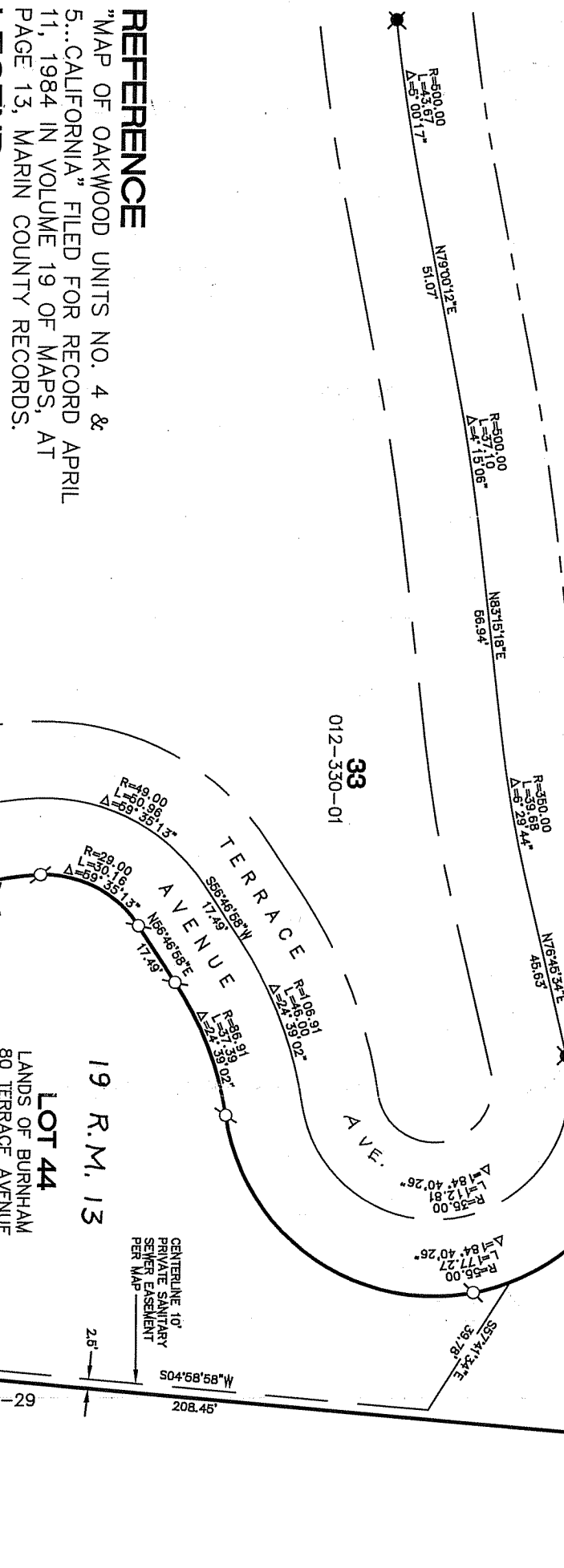
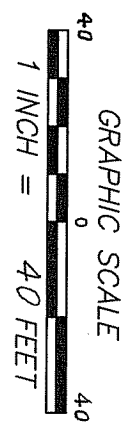
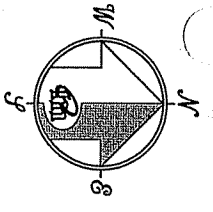
### COUNTY SURVEYOR'S STATEMENT

This Corner Record was received 7-18-2000 1900 and examined and filed 7-19-2000 1900.

Signed [Signature] Title DEPUTY



County Surveyor's Comment \_\_\_\_\_



**REFERENCE**

"MAP OF OAKWOOD UNITS NO. 4 & 5.. CALIFORNIA" FILED FOR RECORD APRIL 11, 1984 IN VOLUME 19 OF MAPS, AT PAGE 13, MARIN COUNTY RECORDS.

**LEGEND**

- FOUND MONUMENT
- FOUND IRON PIPE, PLS 4206
- SET 5/8" REBAR WITH CAP, PLS 6784

**CORNER RECORD**

**MERIDIAN SURVEYING**  
 100 DRAKES LANDING RD, #164  
 GREENBRAE, CA 94123  
 (415) 461-1241  
 info@meridiansurvey.com

**NOTES**

1. INGRESS/EGRESS EASEMENT NOT SHOWN.
2. ROADWAY & UTILITY EASEMENT NOT SHOWN.

**19 R.M. 13**

**LOT 44**

LANDS OF BURNHAM  
 80 TERRACE AVENUE  
 012-330-09  
 22,207± SQ.FT.

25'

208.45'

012-031-29

012-022-07

012-330-10

012-022-08

012-022-09

012-330-01

012-330-08

012-330-09

