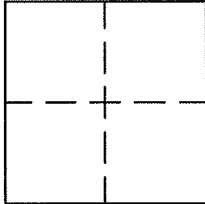


CORNER RECORD

Document Number APN 012-330-01

City of SAN RAFAEL County of MARIN, California

Brief Legal Description LOT 33 "MAP OF OAKWOOD UNITS NO. 4 & 5" VOLUME 19 AT PAGE 13 OF MAPS.



CORNER TYPE

Government Corner Control
Meander Property
Rancho Other
Date of Survey MAY & JULY, 2016

COORDINATES (Optional)

N. _____
E. _____
Zone _____ NAD27 NAD83
NAD83Epoch _____
Elev. _____
Vert. Datum: NGVD29 NAVD88
Meas. Units: Metric Imperial

Corner - Left as found Found and tagged Established Reestablished Rebuilt

Identification and type of corner found: Evidence used to identify or procedure used to establish or reestablish the corner:
RE-ESTABLISHED THE NORTHWEST CORNER OF LOT 33 BASED ON FOUND ORIGINAL STREET CENTERLINE MONUMENTS AS WELL AS 1 ORIGINAL PROPERTY CORNER (SEE SHEET 2) PER "MAP OF OAKWOOD UNITS NO. 4 & 5" FILED FOR RECORD ON APRIL 11, 1984 IN VOLUME 19 AT PAGE 13 OF MAPS, MARIN COUNTY RECORDS.

A description and the physical condition of the monument as found and as set or reset: _____
ALL MONUMENTS FOUND IN GOOD CONDITION. (SEE PAGE 2 FOR ADDITIONAL INFORMATION)

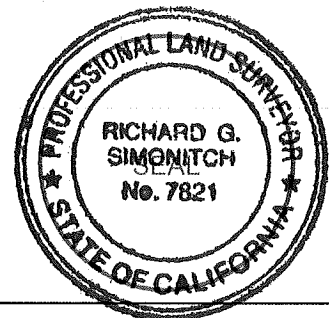
SURVEYOR'S STATEMENT

This Corner Record was prepared by me or under my direction in conformance with the Land Surveyor's Act on AUGUST 22, 2016
Signed [Signature] P.L.S. / R.C.E. No. P.L.S. 8961



COUNTY SURVEYOR'S STATEMENT

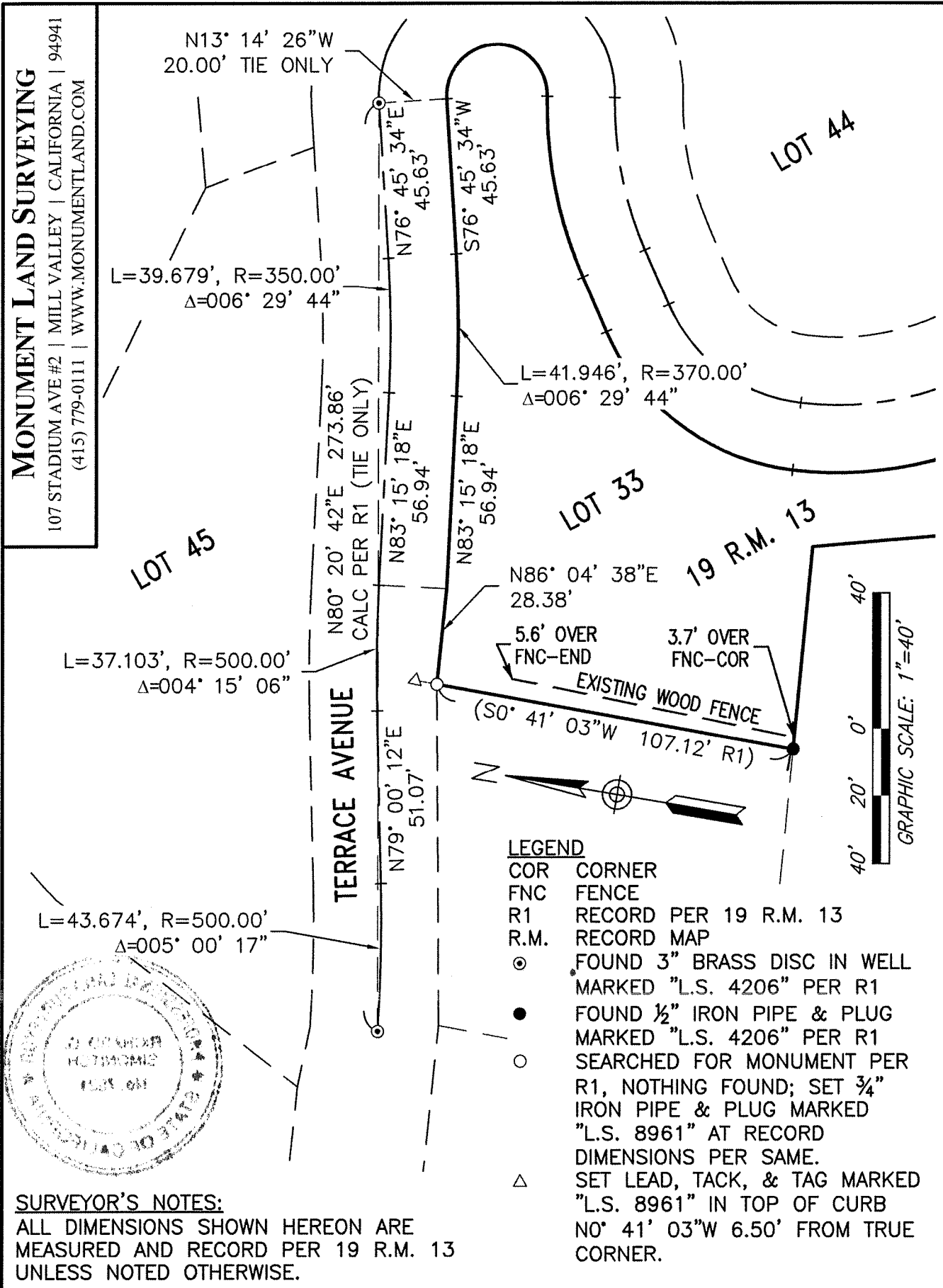
This Corner Record was received AUGUST 24, 2016
and examined and filed OCTOBER 21, 2016
Signed [Signature] P.L.S. of R.C.E. No. 7821
Title County Surveyor



County Surveyor's Comment _____

MONUMENT LAND SURVEYING

107 STADIUM AVE #2 | MILL VALLEY | CALIFORNIA | 94941
 (415) 779-0111 | WWW.MONUMENTLAND.COM



N13° 14' 26"W
 20.00' TIE ONLY

L=39.679', R=350.00'
 Δ=006° 29' 44"

N76° 45' 34"E
 45.63'

S76° 45' 34"W
 45.63'

L=41.946', R=370.00'
 Δ=006° 29' 44"

N80° 20' 42"E 273.86'
 CALC PER R1 (TIE ONLY)

N83° 15' 18"E
 56.94'

N83° 15' 18"E
 56.94'

LOT 45

LOT 33

LOT 44

L=37.103', R=500.00'
 Δ=004° 15' 06"

TERRACE AVENUE

N86° 04' 38"E
 28.38'

5.6' OVER
 FNC-END

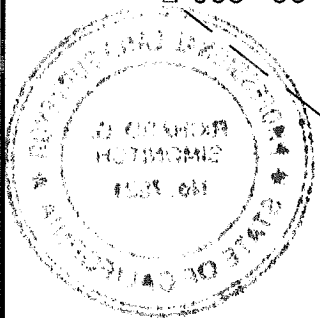
3.7' OVER
 FNC-COR

EXISTING WOOD FENCE

(S0° 41' 03"W 107.12' R1)

N79° 00' 12"E
 51.07'

L=43.674', R=500.00'
 Δ=005° 00' 17"



LEGEND

- COR CORNER
- FNC FENCE
- R1 RECORD PER 19 R.M. 13
- R.M. RECORD MAP
- ⊙ FOUND 3" BRASS DISC IN WELL MARKED "L.S. 4206" PER R1
- FOUND 1/2" IRON PIPE & PLUG MARKED "L.S. 4206" PER R1
- SEARCHED FOR MONUMENT PER R1, NOTHING FOUND; SET 3/4" IRON PIPE & PLUG MARKED "L.S. 8961" AT RECORD DIMENSIONS PER SAME.
- △ SET LEAD, TACK, & TAG MARKED "L.S. 8961" IN TOP OF CURB N0° 41' 03"W 6.50' FROM TRUE CORNER.

SURVEYOR'S NOTES:

ALL DIMENSIONS SHOWN HEREON ARE MEASURED AND RECORD PER 19 R.M. 13 UNLESS NOTED OTHERWISE.