

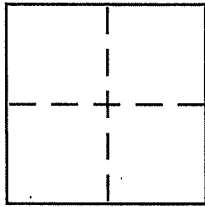
**CORNER RECORD**

Document Number 12-282-30

City of SAN RAFAEL

County of MARIN, California

Brief Legal Description LOT 7, MAP of PICOLO Valle, 17 RM 71



**CORNER TYPE**

Government Corner  Control   
Meander  Property   
Rancho  Other   
Date of Survey APRIL 29, 2004

**COORDINATES (Optional)**

N. \_\_\_\_\_  
E. \_\_\_\_\_  
Zone \_\_\_\_\_ NAD27  NAD83   
NAD83 Epoch \_\_\_\_\_  
Elev. \_\_\_\_\_  
Vert. Datum: NGVD29  NAVD88   
Meas. Units: Metric  Imperial

Corner - Left as found  Found and tagged  Established  Reestablished  Rebuilt

Identification and type of corner found: Evidence used to identify or procedure used to establish or reestablish the corner:

RE-ESTABLISH THE WESTERLY & A PORTION OF THE NORTHERLY LINE OF LOT 7, MAP OF PICOLO VALLE, 17 RM 71 FROM STANDARD STREET MONUMENTS ON PLEASANT LANE & AS SHOWN IN DETAIL ON THE SKETCH ON THE REVERSE SIDE OF THIS SHEET.

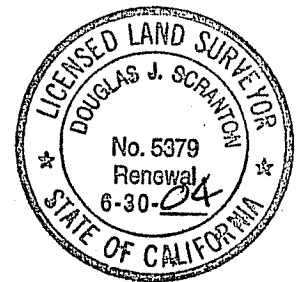
A description of the physical condition of the monument as found and as set or reset:

set either 1/2" rebar with pls yellow cap affixed to top STAMPED SCRANTON, PLS 5379 OR set ASPHALT NAIL IN PAVING. Refer to sketch on reverse side for particulars

**SURVEYOR'S STATEMENT**

This Corner Record was prepared by me or under my direction in conformance with the Land Surveyor's Act on MAY 14<sup>th</sup> 2004

Signed [Signature] P.L.S or R.C.E. No. PLS 5379



**COUNTY SURVEYOR'S STATEMENT**

This Corner Record was received JUNE 1, 2004

and examined and filed JUNE 22, 2004

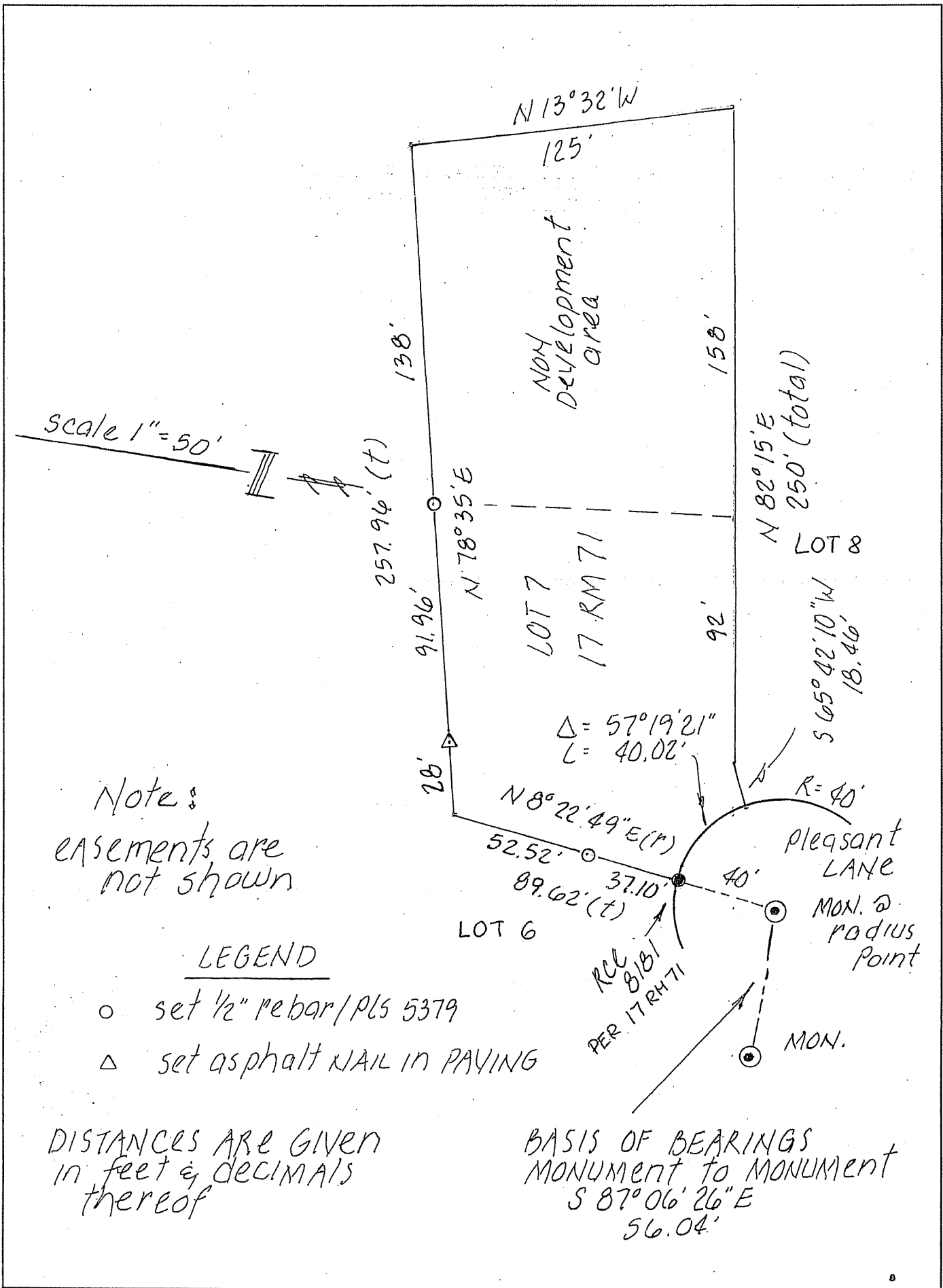
Signed \_\_\_\_\_ P.L.S or R.C.E. No. 7128

Title COUNTY SURVEYOR



County Surveyor's Comment \_\_\_\_\_

PREPARED BY DJ SCRANTON SURVEYING HOUATO CALIFORNIA



scale 1" = 50'

Note:  
 easements are  
 not shown

LEGEND

- set 1/2" rebar/PLS 5379
- △ set asphalt NAIL in PAVING

DISTANCES ARE GIVEN  
 in feet & decimals  
 thereof

BASIS OF BEARINGS  
 MONUMENT to MONUMENT  
 S 87° 06' 26" E  
 56.04'